



Dukes Mead, Bridgwater TA6 6DH

welcome to

Dukes Mead, Bridgwater

Two bedroom semi detached house in Bridgwater, offering a lounge, kitchen, rear enclosed garden and off road parking.

Description

Situated within the residential area of Dukes Mead in Bridgwater, this two-bedroom semi-detached home offers an excellent opportunity for first-time buyers, downsizers or investors alike. Dukes Mead is a well-established residential street within the town, providing a convenient setting with easy access to local amenities and transport links. [streetlist.co.uk] Internally, the property offers well-balanced accommodation throughout, comprising a welcoming lounge providing a comfortable living space, and a fitted kitchen offering a range of units with space for essential appliances.

To the first floor, there are two good-sized bedrooms, both offering flexibility for a variety of uses including guest accommodation or home working. These are served by a family bathroom fitted with a three-piece suite. Externally, the property benefits from a rear enclosed garden, ideal for outdoor relaxation or entertaining, whilst also being low-maintenance. To the front or side of the property, there is off-road parking available for up to two vehicles, a particularly desirable feature within this location.

This property combines practical living space with a convenient location, making it an ideal choice for a range of prospective buyers.

Porch

Door opening into the lounge.

Lounge

15' 7" x 12' (4.75m x 3.66m)
Double glazed window. Laminate style flooring.
Under stairs storage space. Stairs to first floor.

Kitchen

12' x 8' 6" (3.66m x 2.59m)
Double glazed window. The kitchen has a range of wall and base units with work surfaces over, sink and drainer, electric oven and hob with extractor fan, part tiled, space for white goods, rear door opening out to the garden.





Landing

Stairs from ground floor. Doors to all rooms.

Bedroom Two

12' Max x 8' 8" Max (3.66m Max x 2.64m Max)
Double glazed window to front. Storage cupboard housing water tank. Carpet.

Bedroom One

12' Max x 8' 6" Max (3.66m Max x 2.59m Max)
Double glazed window to rear. Carpet.

Bathroom

Double glazed window. Wash hand basin, WC, bath with electric shower over, extractor fan, lino flooring.

Loft Space

Ladder, part boarded, insulation and lighting.

Front Garden

Laid to lawn.

Rear Garden

The rear enclosed garden is laid mainly to lawn, with raised area and a patio.

Parking

Off road parking for two vehicles.



view this property online fox-and-sons.co.uk/Property/TAU109363



welcome to

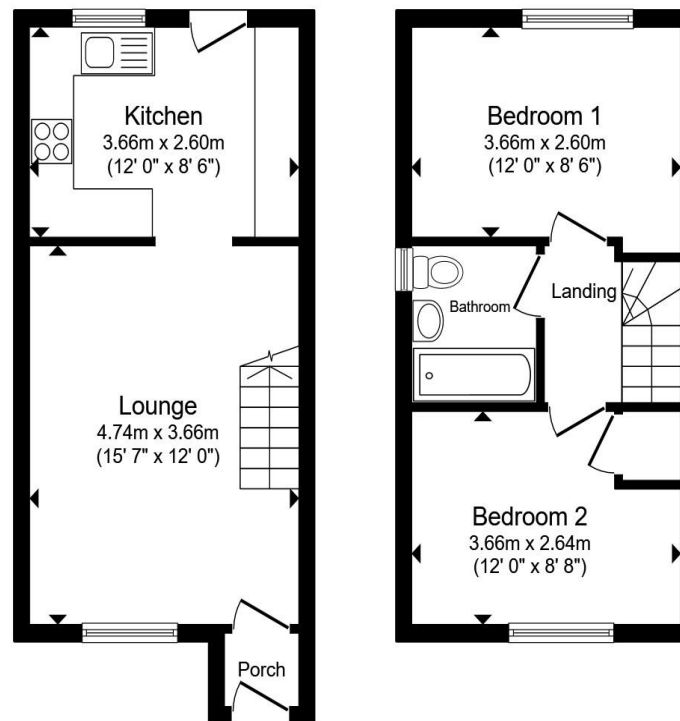
Dukes Mead, Bridgwater

- Two Bedroom Semi Detached House
- Lounge
- Fitted Kitchen
- Rear Enclosed Garden
- Driveway Parking

Tenure: Freehold EPC Rating: D

Council Tax Band: A

£195,000



Ground Floor

First Floor

Total floor area 54.1 m² (582 sq.ft.) approx

This floor plan is for illustrative purposes only. It is not drawn to scale. Any measurements, floor areas (including any total floor area), openings and orientation are approximate. No details are guaranteed, they cannot be relied upon for any purpose and they do not form part of any agreement. No liability is taken for any error, omission or misstatement. A party must rely upon its own inspection(s). Powered by www.propertybox.io



view this property online fox-and-sons.co.uk/Property/TAU109363



Property Ref:
TAU109363 - 0002

1. MONEY LAUNDERING REGULATIONS Intending purchasers will be asked to produce identification documentation at a later stage and we would ask for your co-operation in order that there is no delay in agreeing the sale. 2. These particulars do not constitute part or all of an offer or contract. 3. The measurements indicated are supplied for guidance only and as such must be considered incorrect. Potential buyers are advised to recheck measurements before committing to any expense. 4. We have not tested any apparatus, equipment, fixtures or services and it is in the buyers interest to check the working condition of any appliances. 5. Where an EPC, or a Home Report (Scotland only) is held for this property, it is available for inspection at the branch by appointment. If you require a printed version of a Home Report, you will need to pay a reasonable production charge reflecting printing and other costs. 6. We are not able to offer an opinion either written or verbal on the content of these reports and this must be obtained from your legal representative. 7. Whilst we take care in preparing these reports, a buyer should ensure that his/her legal representative confirms as soon as possible all matters relating to title including the extent and boundaries of the property and other important matters before exchange of contracts.

Fox & Sons is a trading name of Sequence (UK) Limited which is registered in England and Wales under company number 4268443, Registered Office is Cumbria House, 16-20 Hockliffe Street, Leighton Buzzard, Bedfordshire, LU7 1GN. VAT Registration Number is 500 2481 05.



01823 286161



taunton@fox-and-sons.co.uk



52 East Street, TAUNTON, Somerset, TA1 3NA



fox-and-sons.co.uk