

**SCOTT &
STAPLETON**

BRIGHTON AVENUE
Southend-On-Sea, SS1 2QN
£1,350 Per Month

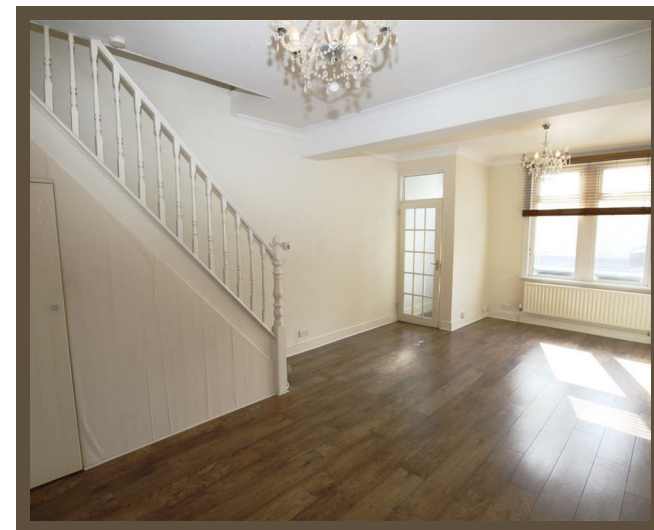
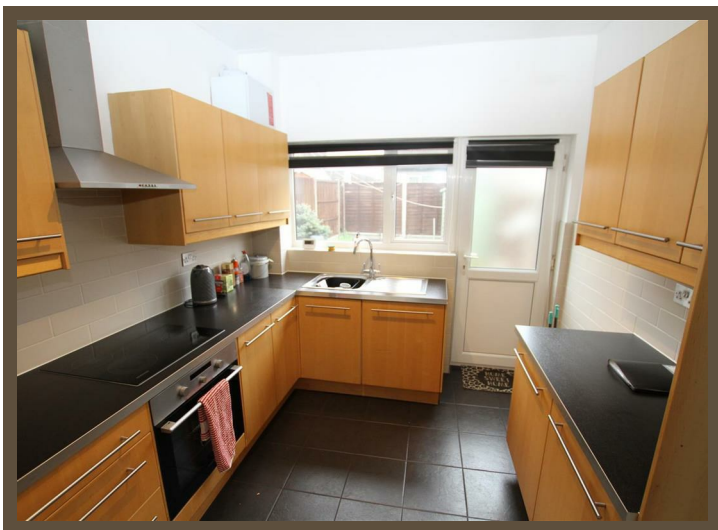
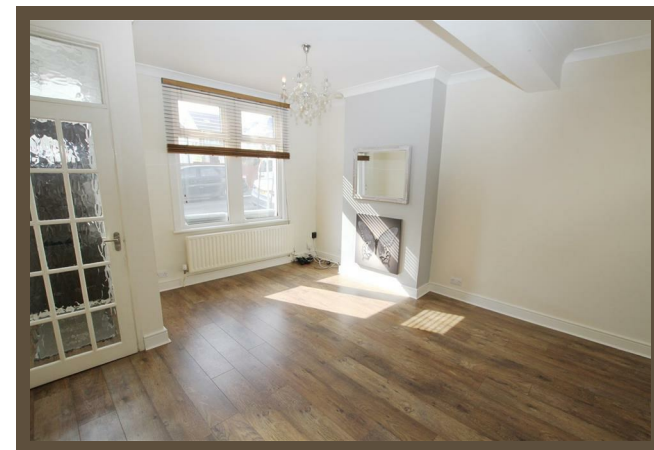
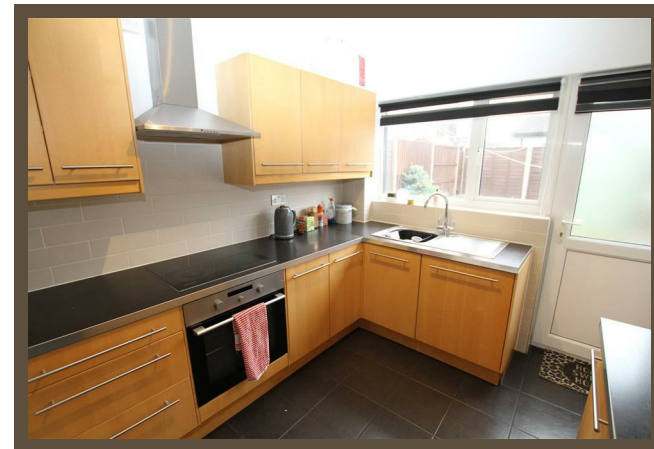
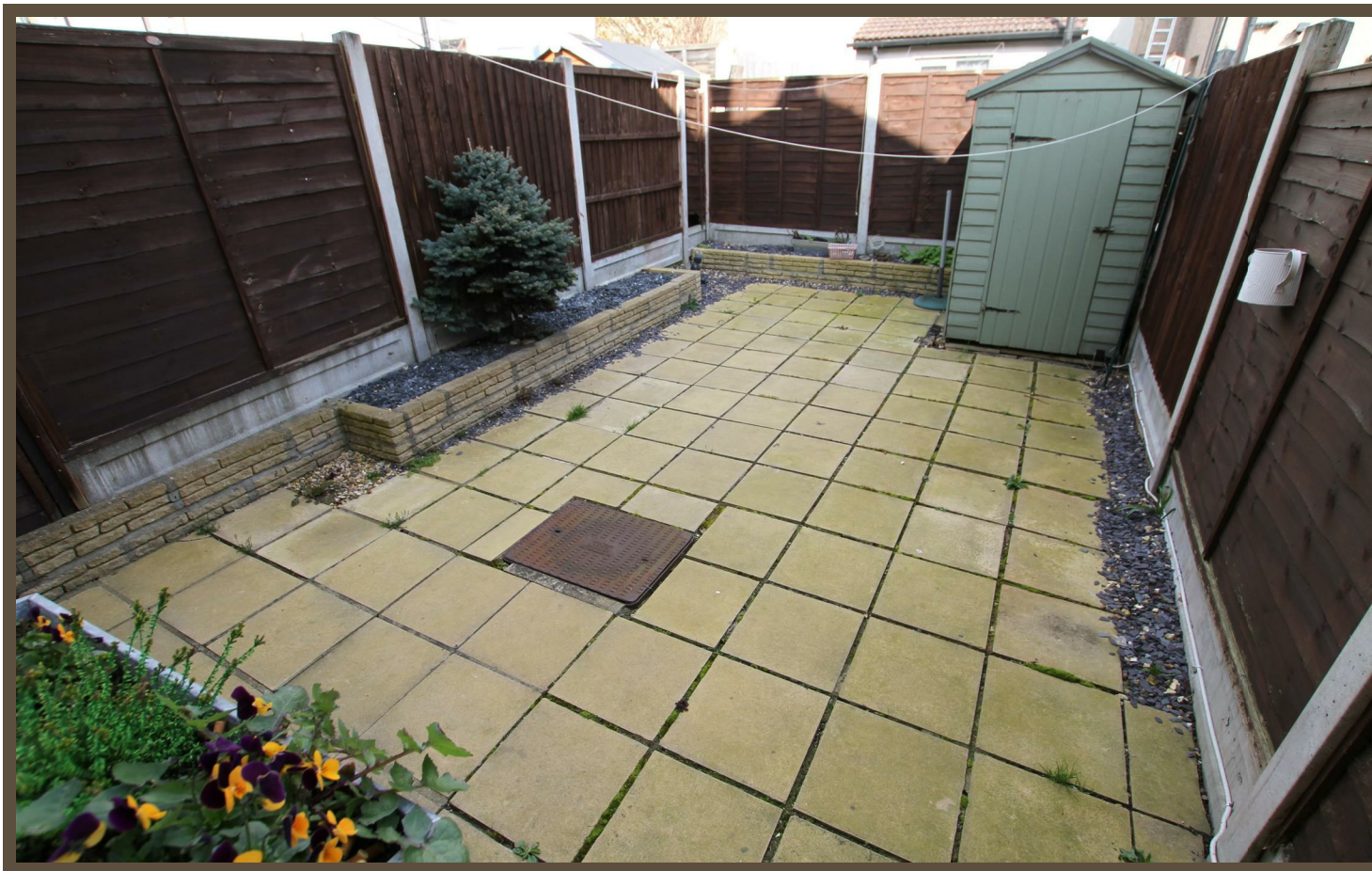




BRIGHTON AVENUE
SOUTHEND-ON-SEA, SS1 2QN

**£1,350 per
month**

Scott and Stapleton are very pleased to offer this spacious and well presented house with two double bedrooms, modern fitted kitchen, courtyard style garden, large lounge diner, double glazed windows and gas central heating. Situated in a popular location close to Southend city centre and mainline station, shopping facilities and bus routes. Offered unfurnished and available early June.



Porch

Living/ Dining Room : 22'4 x 13'1 (6.81m x 3.99m):

Kitchen: 9'4 x 8'11 (2.84m x 2.72m):

First Floor Landing

Master Bedroom: 13'1x 10'11 (3.99m x 3.33m):

Bedroom Two : 10'10x 8'3 (3.3m x 2.51m):

Bathroom:

Rear courtyard garden

