

Flat 405, 10 Marian Place, Bethnal Green, London, E2 9FX
£2,695 Per month
EPC Rating: B Council Tax Band: C



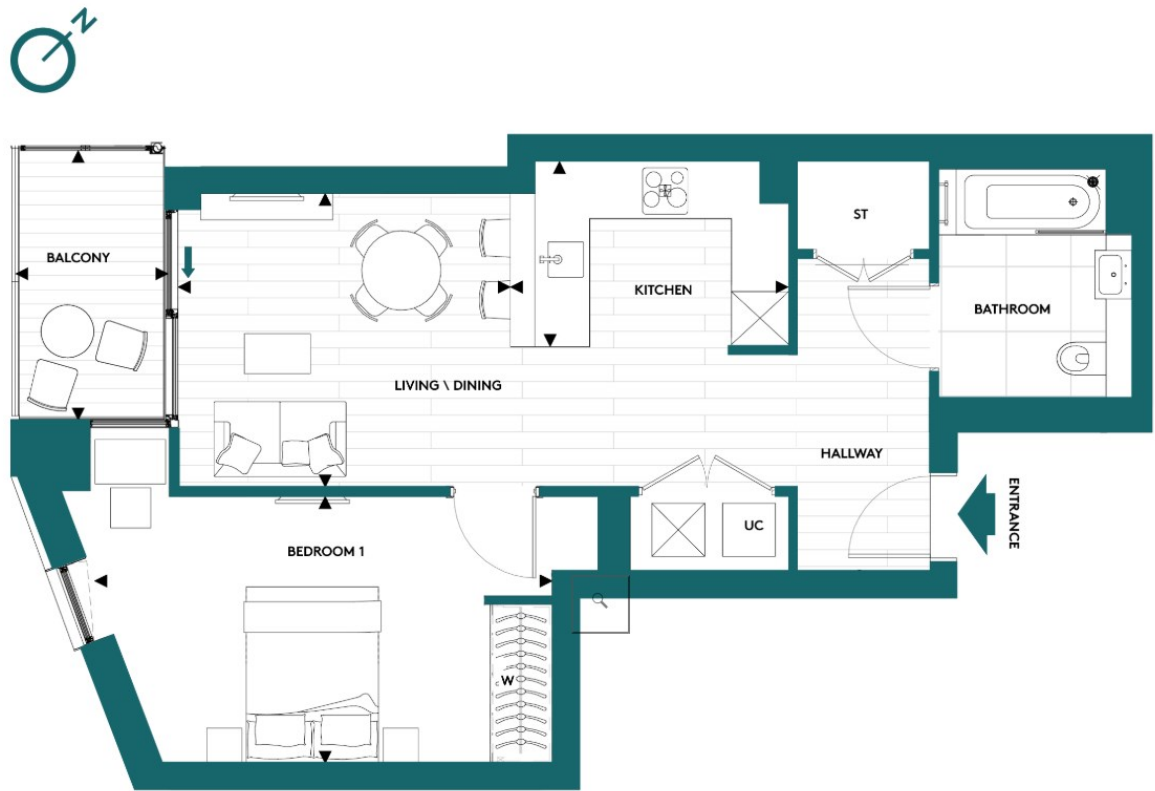
Welcome to this exquisite one-bedroom apartment located on the fourth floor of the prestigious Regent's View development in Bethnal Green, London. This brand new build, completed in 2026, offers a modern living experience in a vibrant and sought-after area. Spanning an impressive 613 square feet, this apartment has been thoughtfully designed to maximise space and light, creating a warm and inviting atmosphere.

As you enter, you are greeted by a spacious reception room that serves as the heart of the home. This area is perfect for both relaxation and entertaining, with large windows that allow natural light to flood in, enhancing the contemporary design. The open-plan layout seamlessly connects the reception room to the stylish kitchen, which is equipped with high-quality appliances and sleek finishes.

The bedroom is generously sized, providing a peaceful retreat at the end of the day. It offers ample storage space, ensuring that your living area remains clutter-free. The bathroom is equally



Percy House,
33-34 Gresse Street,
London
W1T 1QU
020 7043 8888
Lettings@stone.london



Energy Efficiency Rating		
	Current	Potential
Very energy efficient - lower running costs		
(92 plus) A		
(81-91) B	84	
(69-80) C		
(55-68) D		
(39-54) E		
(21-38) F		
(1-20) G		
Not energy efficient - higher running costs		
England & Wales	EU Directive 2002/91/EC	