



BRIGHOUSE
WOLFF

113 Fawcett, Skelmersdale, WN8 6RW
£90,000



Requiring some updating but offering tremendous potential this three bedroom end terraced house is located within easy access of ASDA and the Concourse Shopping Centre, where there are bus links to Wigan and Southport.

The double glazed accommodation has gas central heating and comprises : spacious entrance hall with store, dining kitchen, conservatory, lounge and three bedrooms, shower room and separate W.C. to the first floor.

Fawcett is close to a range of local amenities . With good transport links, residents can enjoy the benefits of both Skelmersdale and the surrounding areas.

Entrance Hall

Stairs to the first floor and useful store cupboard.

Lounge

14'8 x 10'4 (4.47m x 3.15m)

Useful walk in under stairs store cupboard.

Dining Kitchen

11'6 x 12'8 (3.51m x 3.86m)

The kitchen has ample space for a dining table and is fitted with a range of base and wall units with worktops, including a single drainer sink unit and electric cooker point. The walls are part tiled.

Conservatory

7'1 x 10' (2.16m x 3.05m)

A double glazed conservatory, built on a brick base.

FIRST FLOOR

Landing

Store cupboard and access to the roof void.

Bedroom 1

11'7 x 10'9 (3.53m x 3.28m)

Rear facing bedroom with a range of fitted robes.

Bedroom 2

11'5 x 5'9 (3.48m x 1.75m)

Rear facing

Bedroom 3

11'5 x 6'6 (3.48m x 1.98m)

Rear facing

Shower Room

Tiled shower compartment and wash basin

Separate W.C.

Low level W.C.

Outside

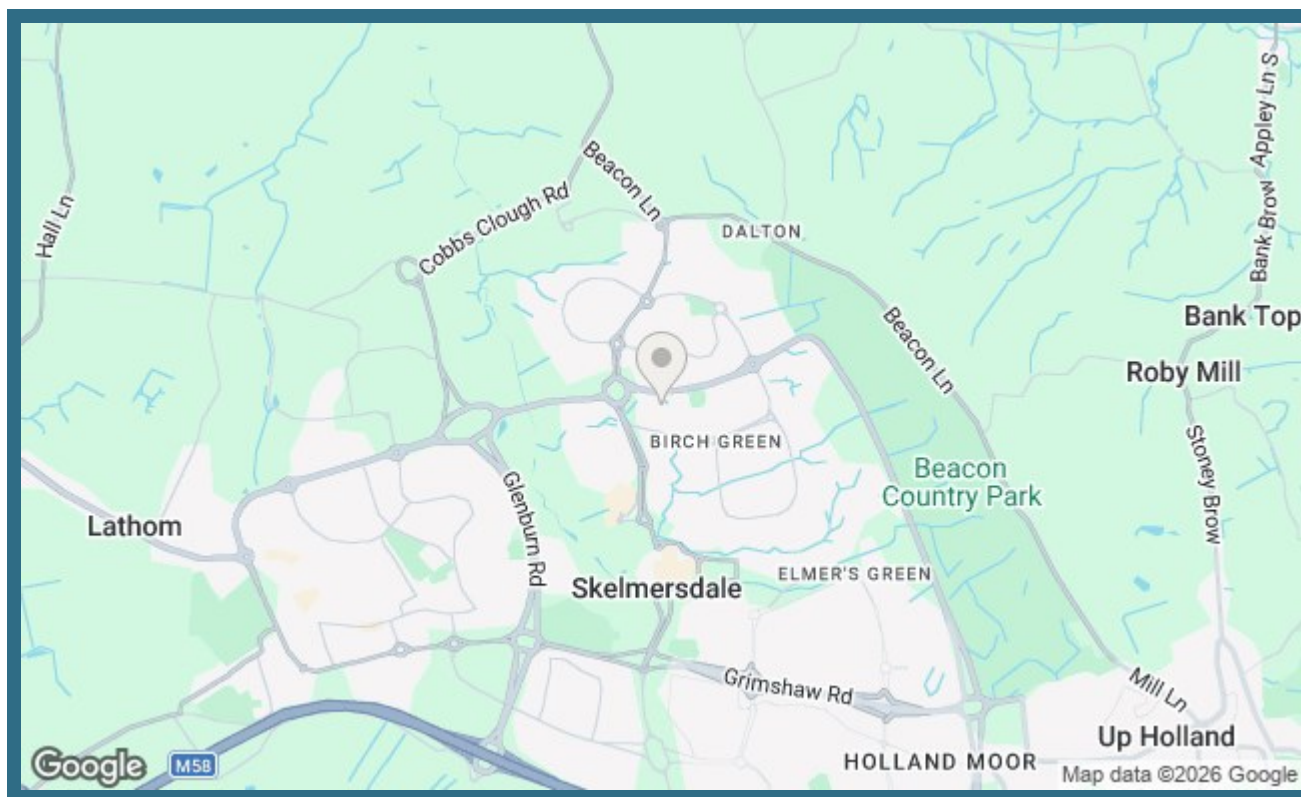
Store to the front of the property and an enclosed paved garden to the rear with shed and gate giving pedestrian access to the rear.



| Energy Efficiency Rating | | |
|---|----------------------------|-----------|
| | Current | Potential |
| Very energy efficient - lower running costs (92 plus) A | | |
| (81-91) B | | |
| (69-80) C | | |
| (55-68) D | | |
| (39-54) E | | |
| (21-38) F | | |
| (1-20) G | | |
| Not energy efficient - higher running costs | | |
| England & Wales | EU Directive 2002/91/EC | |

| Environmental Impact (CO ₂) Rating | | |
|---|----------------------------|-----------|
| | Current | Potential |
| Very environmentally friendly - lower CO ₂ emissions (92 plus) A | | |
| (81-91) B | | |
| (69-80) C | | |
| (55-68) D | | |
| (39-54) E | | |
| (21-38) F | | |
| (1-20) G | | |
| Not environmentally friendly - higher CO ₂ emissions | | |
| England & Wales | EU Directive 2002/91/EC | |





Important Information

We endeavor to make our sales details accurate and reliable but they should not be relied on as statements or representations of fact and they do not constitute any part of an offer or contract. The seller does not make any representation or give any warranty in relation to the property and we have no authority to do so on behalf of the seller. Any information given by us in these sales details or otherwise is given without responsibility on our part.

Services, fittings and equipment referred to in the sales details have not been tested (unless otherwise stated) and no warranty can be given as to their condition.

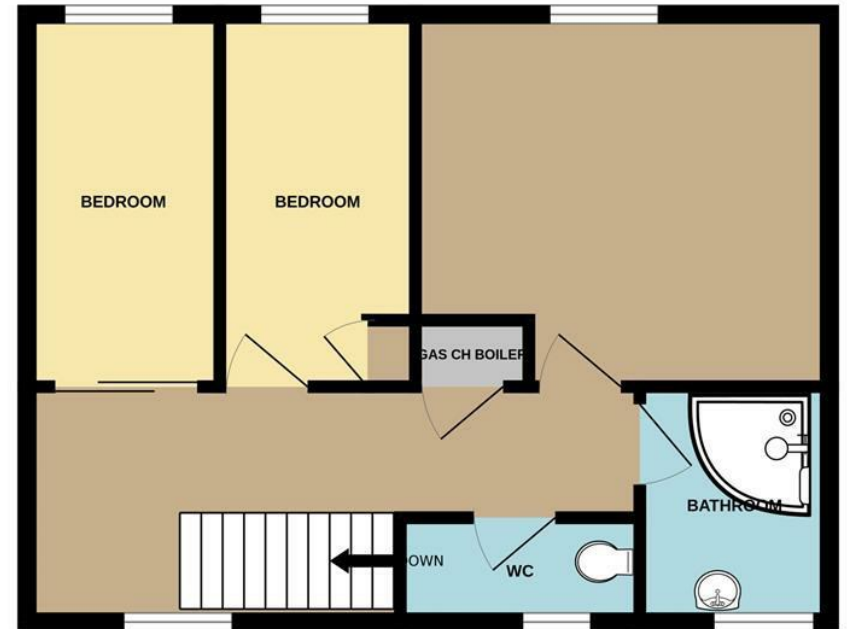
We strongly recommend that all the information which we provide about the property is verified by yourself or your advisers.

Please contact us before viewing the property. If there is any point of particular importance to you we will be pleased to provide additional information or to make further enquiries. We will also confirm that the property remains available. This is particularly important if you are contemplating travelling some distance to view the property.

GROUND FLOOR
469 sq.ft. (43.6 sq.m.) approx.



1ST FLOOR
458 sq.ft. (42.6 sq.m.) approx.



TOTAL FLOOR AREA : 927 sq.ft. (86.2 sq.m.) approx.

Whilst every attempt has been made to ensure the accuracy of the floorplan contained here, measurements of doors, windows, rooms and any other items are approximate and no responsibility is taken for any error, omission or mis-statement. This plan is for illustrative purposes only and should be used as such by any prospective purchaser. The services, systems and appliances shown have not been tested and no guarantee as to their operability or efficiency can be given.
Made with Metropix ©2026



