



Peter Clarke

IN ASSOCIATION WITH Winkworth

42 Railway Crescent, Shipston-On-Stour, CV36 4GE

- End Terrace Property
- Master Bedroom With En Suite
- Two Further Bedrooms
- Family Bathroom
- Sitting Room
- Downstairs Cloakroom
- South Facing Rear Garden
- Garage & Off Road Parking



£335,000

A well presented three bedroom end terrace property situated in a popular residential area of Shipston On Stour, overlooking green space. The accommodation briefly comprises of entrance hall, sitting room, kitchen/diner and cloakroom to the ground floor. To the first floor there is a master bedroom with en suite, two further bedrooms and a family bathroom. Outside there is a south facing rear garden, garage and a real bonus is the off road parking for two more cars .

SHIPSTON ON STOUR is a popular market town, lying approximately 9 miles from Stratford upon Avon town centre, on the edge of the Cotswolds and offering excellent local amenities. The town offers a variety of shopping, social, educational and recreational facilities and there is easy access to the motorway network and regional centres.

ENTRANCE HALL

having stairs leading to first floor and door through to

SITTING ROOM

having bay window to front elevation, feature fireplace with gas fire and door leading to inner lobby.

CLOAKROOM

having window to side elevation, wc and wash hand basin.

KITCHEN/DINING ROOM

having window to rear elevation and doors leading to the rear garden, a range of wall and base units with work surfaces over, integrated electric oven with gas hob and extractor over, sink and drainer, wall mounted gas boiler. space for further appliances.

FIRST FLOOR LANDING

having window to side elevation, access to roof space and airing cupboard housing hot water tank.

MASTER BEDROOM

having window to front elevation, built in wardrobes and door leading to

EN SUITE

having window to front elevation, enclosed shower cubicle and wash hand basin.

BEDROOM

having window to rear elevation.

BEDROOM

having window to rear elevation.

FAMILY BATHROOM

having suite comprising of panelled bath , pedestal wash hand basin and wc.

OUTSIDE

To the front of the property there is a small gravelled fore garden, off road parking space and path leading to the front door. There is side access via a gate to the rear south facing walled garden which has a patio, lawned area, established shrubs and borders and path leading to garage. The garage has power and light, an up and over door with off road parking space to the front.

TENURE

The property is understood to be freehold although we have not seen evidence. This should be checked by your solicitor before exchange of contracts.

SERVICES

We have been advised by the vendor that mains electricity, gas, water and drainage are connected to the property. However, this should be checked by your solicitor before exchange of contracts. Gas central heating.

RIGHTS OF WAY

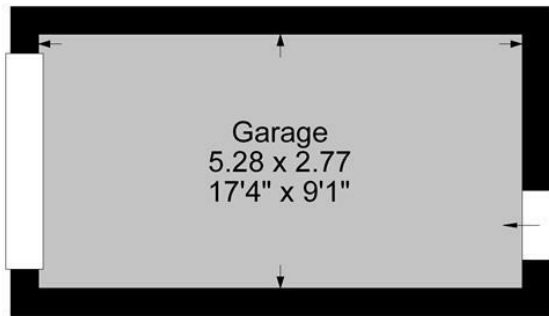
The property is sold subject to and with the benefit of any rights of way, easements, wayleaves, covenants or restrictions etc. as may exist over same whether mentioned herein or not.



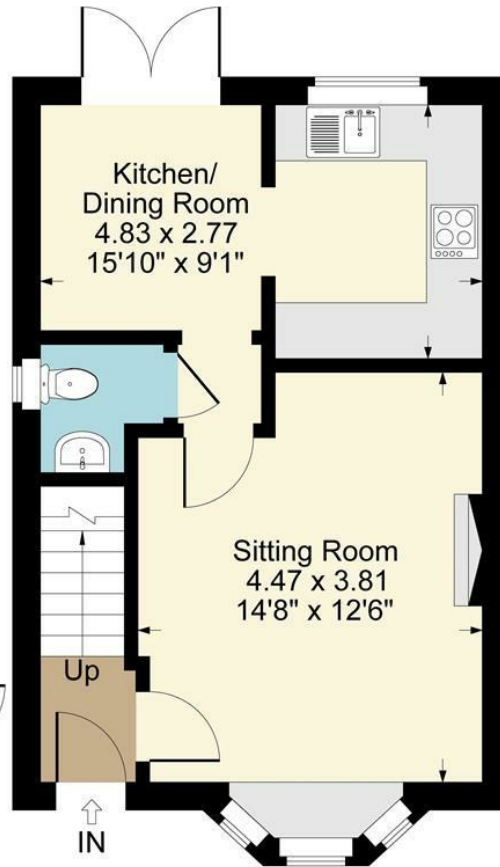
42 Railway Crescent, Shipston-on-Stour



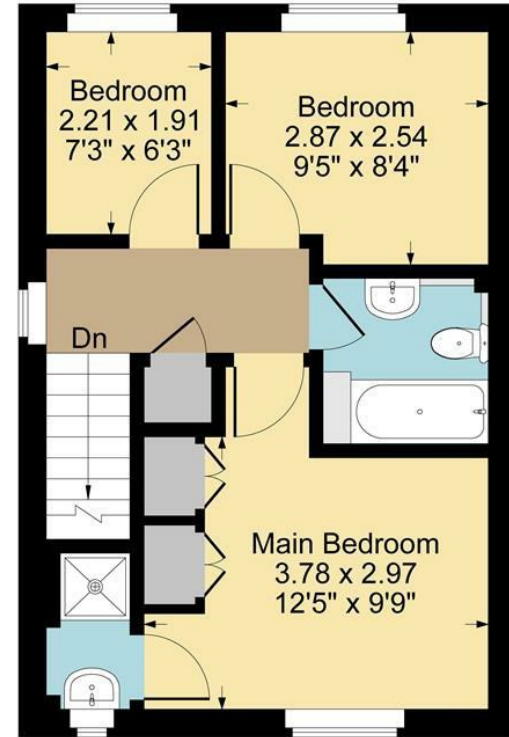
Approximate Gross Internal Area
Ground Floor = 36.60 sq m / 394 sq ft
First Floor = 35.67 sq m / 384 sq ft
Garage = 14.62 sq m / 157 sq ft
Total Area = 86.89 sq m / 935 sq ft
Illustration for identification purposes only,
measurements are approximate, not to scale.



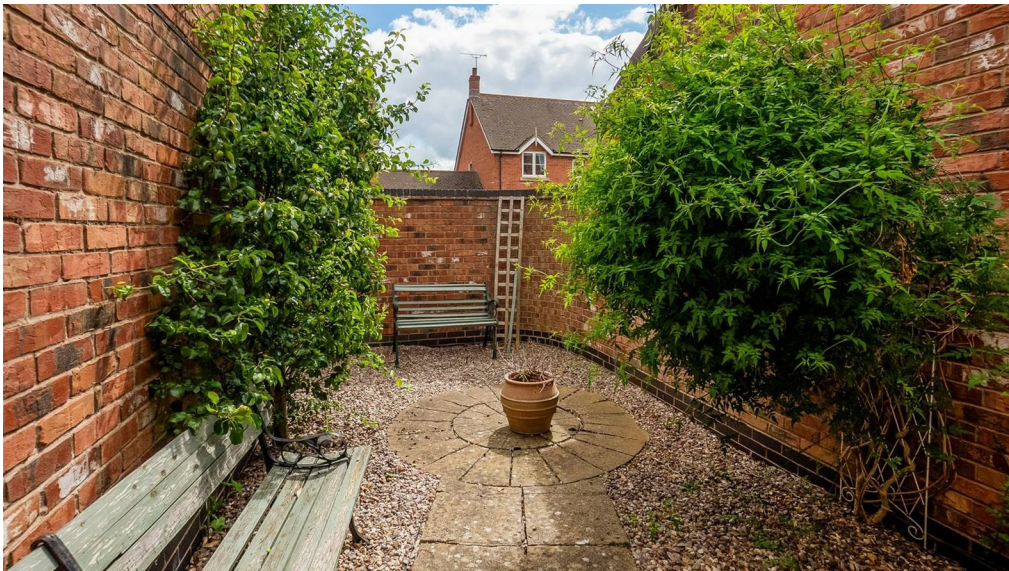
Garage



Ground Floor



First Floor



DISCLAIMER: HMR Homes Limited t/a Peter Clarke in association with Winkworth themselves and for the vendors or lessors of this property whose agents they are, give notice that the particulars are set out as a general outline only for the guidance of intending purchasers or lessors, and do not constitute part of an offer or contract; all descriptions, dimensions, references to condition and necessary permission for use and occupation, and other details are given without responsibility and any intending purchasers or tenants should not rely on them as statements or presentations of fact but must satisfy themselves by inspection or otherwise as to the correctness of each of them. Room sizes are given on a gross basis, excluding chimney breasts, pillars, cupboards, etc. and should not be relied upon for carpets and furnishings. We have not carried out a detailed survey and/or tested services, appliances and specific fittings. No person in the employment of HMR Homes Limited t/a Peter Clarke in association with Winkworth has any authority to make or give any representation of warranty whatever in relation to this property and it is suggested that prospective purchasers walk the land and boundaries of the property, prior to exchange of contracts, to satisfy themselves as to the exact area of land they are purchasing.

Multi-award winning offices
serving South Warwickshire & North Cotswolds

13 High Street, Shipston-on-Stour, Warwickshire, CV36 4AB
01608 260026 | shipston@peterclarke.co.uk | www.peterclarke.co.uk



Peter Clarke

IN ASSOCIATION WITH Winkworth