



105 New Stevenston Road, Motherwell, ML1 4EE
Offers Over £123,000



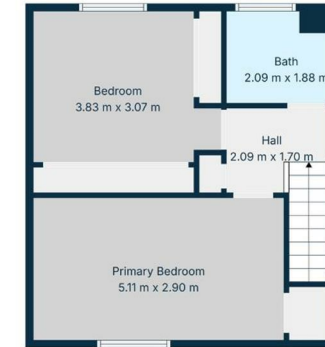
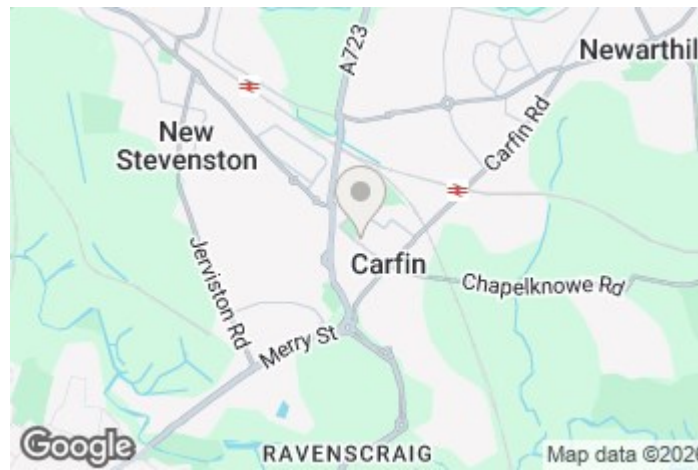
Well-presented two-bedroom mid-terraced home located on New Stevenson Road, Motherwell, offering excellent transport links and everyday convenience.

Positioned within the popular New Stevenson area, this attractive home is ideal for first-time buyers, downsizers or investors alike. The property boasts two well-proportioned bedrooms, a bright and spacious lounge, and a modern dining kitchen, providing comfortable and practical living throughout.

Externally, the home benefits from private gardens and convenient parking, adding to its overall appeal.

The location is a key feature, with easy access to the M8 motorway network and nearby rail links, making commuting to Glasgow and Edinburgh straightforward. A range of local shops, schools and amenities are all within easy reach, while the surrounding area offers a strong community feel.

Early viewing is highly recommended to appreciate the accommodation on offer.



Energy Efficiency Rating		Current	Potential
Very energy efficient - lower running costs			
(92 plus) A			
(81-91) B			
(69-80) C			
(55-68) D			
(39-54) E			
(21-38) F			
(1-20) G			
Not energy efficient - higher running costs			
Scotland		71	81
	EU Directive 2002/91/EC		

Environmental Impact (CO ₂) Rating		Current	Potential
Very environmentally friendly - lower CO ₂ emissions			
(92 plus) A			
(81-91) B			
(69-80) C			
(55-68) D			
(39-54) E			
(21-38) F			
(1-20) G			
Not environmentally friendly - higher CO ₂ emissions			
Scotland		71	80
	EU Directive 2002/91/EC		