

80 Longford Road, Chorlton, Manchester, M21 9NP



JP&Brimelow
ESTATE AGENTS



3 1 2 C


VIDEO TOUR AVAILABLE A beautifully presented THREE BEDROOM, period mid-terrace home with a charming garden frontage, situated on a highly sought-after residential road just off Oswald Road. Ideally positioned within walking distance of Chorlton Village, the property is close to excellent primary schools, Longford Park, and a wide range of local amenities including local restaurants, delis, shops, and the Metrolink station on Wilbraham Road, offering direct links to the City Centre and MediaCity at Salford Quays. The well-planned accommodation consists of a welcoming entrance hallway, a cozy lounge to the front aspect with bespoke storage, a dining room with a stunning brick exposed feature wall, opening into the fitted kitchen and with access out into the rear enclosed courtyard style garden. To the first floor there is a landing leading to three bedrooms and a modern three-piece family bathroom suite, featuring a roll top bath. The property further benefits from a blend of period features and modern comfort including picture railings, cast iron fire places, gas fired central heating, and both front and rear enclosed courtyard style gardens. Would suit a professional or a young family due to its positioning for the local Primary Schools. Early internal inspection highly recommended.

£495,000





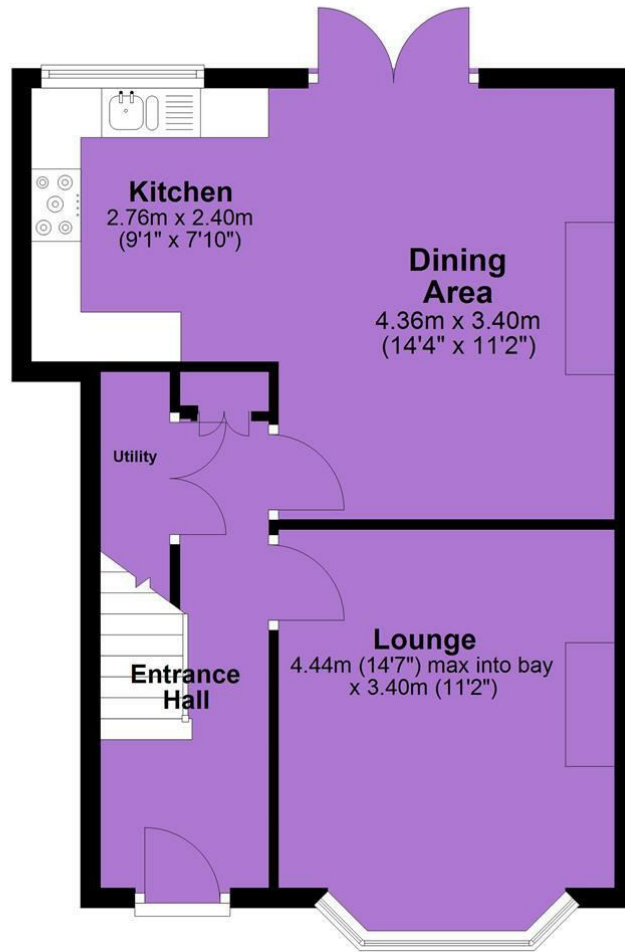
EPC Chart

Energy Efficiency Rating		Current	Potential
Very energy efficient - lower running costs			
(92 plus) A			86
(81-91) B			
(69-80) C		71	
(55-68) D			
(39-54) E			
(21-38) F			
(1-20) G			
Not energy efficient - higher running costs			
England & Wales			EU Directive 2002/91/EC 

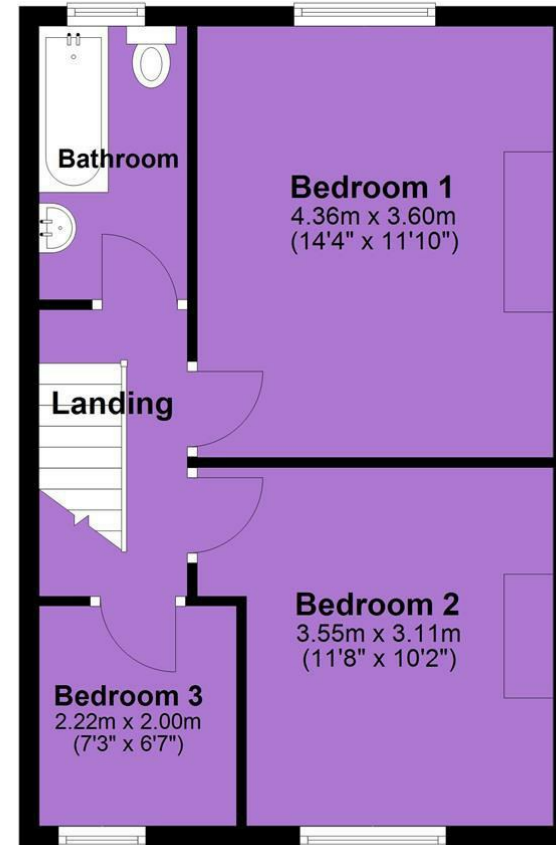


Tenure: Freehold Council Tax Band: B

Ground Floor



First Floor



JP & Brimelow Estate Agents Ltd
430 Barlow Moor Road, Manchester, M21 8AD
Tel: 0161 8822233
E: sales@jpbrimelow.co.uk www.jpandbrimelow.co.uk



JP & Brimelow
ESTATE AGENTS

NOTICE: JP & Brimelow Estate Agents Ltd for themselves and for the vendors or lessors of this property whose agents they are give notice that:

- (i) the particulars are set out as a general outline only for the guidance of intending purchasers or lessees, and do not constitute, nor constitute part of, an offer or contract;
- (ii) all descriptions, dimensions, references to the condition and necessary permissions for use and occupation, and other details are given in good faith and are believed to be correct but any intending purchasers or tenants should not rely on them as statements or representations of fact but must satisfy themselves by inspection or otherwise as to the correctness of each of them;
- (iii) no person in the employment of JP & Brimelow Estate Agents Ltd has any authority to make or give any representation or warranty whatever in relation to this property.

jpandbrimelowstateagents

@jpandbrimelow

