



Connells

Lynch Hill
Kensworth Dunstable



Property Description

* *VILLAGE LOCATION* TWO BEDROOM COTTAGE* *NO UPPER CHAIN* *ON STREET PARKING* *CLOSE TO M1-A5 LINKS* *POTENTIAL TO EXISTENT STPP*

A fantastic opportunity to own a two bedroom semi detached home situated in a popular village location.

Accommodation comprises; entrance hall, lounge and kitchen. Whilst the first floor boasts two goodsize bedrooms and family bathroom. Externally, the home benefits from front and goodsize rear gardens with ample potential to extend STPP.

An ideal purchase for, small families, upsizer or potential investors. Call Connells for more information and to book a viewing.

Lounge

Door and window to front aspect, wooden flooring, feature fireplace, stairs to landing & first floor.

Kitchen

Window to rear aspect, part tiled walls, fitted kitchen, wall and base units, integrated oven and hob, cooker-hood, one bowl sink, tiled flooring.

Bathroom

Ground floor bathroom, tiled floor to ceiling, bath with overhead shower, WC, wash hand basin with vanity unit, window to rear aspect.

Landing

Stairs from lounge.

Bedroom One

Carpeted flooring, window to rear aspect.

Bedroom Two

Carpeted flooring, window to side aspect.

Outside

Front Garden

Large shingle driveway.

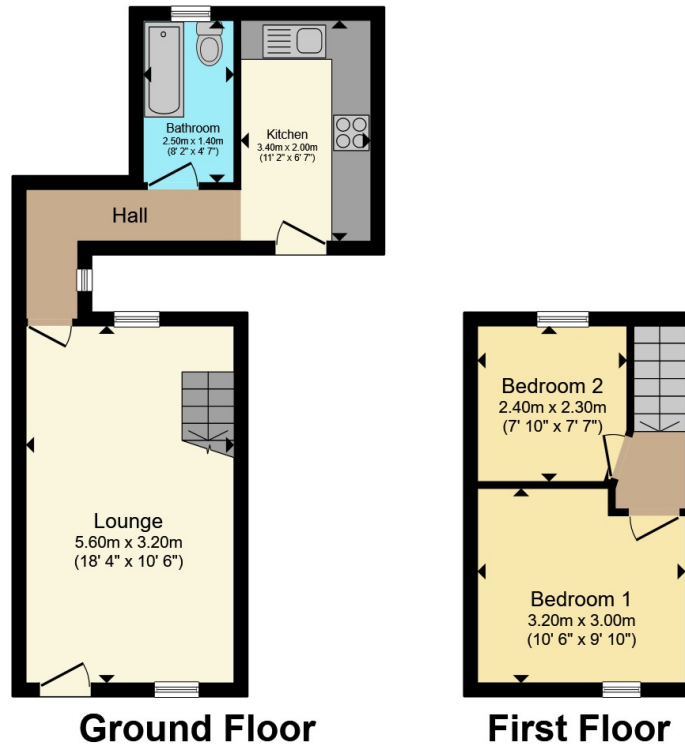
Rear Garden

A generous rear garden featuring a large patio area, with steps leading to a pathway that extends to an outbuilding. The garden offers lawned areas on either side of the pathway.









Total floor area 49.6 m² (534 sq.ft.) approx

This floor plan is for illustrative purposes only. It is not drawn to scale. Any measurements, floor areas (including any total floor area), openings and orientation are approximate. No details are guaranteed, they cannot be relied upon for any purpose and they do not form part of any agreement. No liability is taken for any error, omission or misstatement. A party must rely upon its own inspection(s). Powered by www.propertybox.io



To view this property please contact Connells on

T 01582 661 265

E dunstable@connells.co.uk

19 High Street North
DUNSTABLE LU6 1HX

EPC Rating: D Council Tax
Band: C

Tenure: Freehold

view this property online connells.co.uk/Property/DUN312292



1. MONEY LAUNDERING REGULATIONS Intending purchasers will be asked to produce identification documentation at a later stage and we would ask for your co-operation in order that there will be no delay in agreeing the sale. 2. These particulars do not constitute part or all of an offer or contract. 3. The measurements indicated are supplied for guidance only and as such must be considered incorrect. Potential buyers are advised to recheck measurements before committing to any expense. 4. We have not tested any apparatus, equipment, fixtures, fittings or services and it is in the buyers interest to check the working condition of any appliances.

Connells Residential is registered in England and Wales under company number 1489613, Registered Office is Cumbria House, 16-20 Hockliffe Street, Leighton Buzzard, Bedfordshire, LU7 1GN. VAT Registration Number is 500 2481 05.

See all our properties at www.connells.co.uk | www.rightmove.co.uk | www.zoopla.co.uk

Property Ref: DUN312292 - 0006