

## 47 Ravenhead Drive, Bristol, BS14 9AU

**£230,000**

This neutrally recently re-decorated ground floor garden flat is offered for sale and is particularly suited to first-time buyers. Located in Bristol, the property provides good access to Bristol city centre, making it practical for both work and leisure.

The flat offers two double bedrooms, one bathroom, a kitchen and a reception room, providing a balanced layout for everyday living. A notable benefit is the single garage to the rear, offering secure parking or additional storage. Plus potential driveway to the front (STPP) The private garden enhances the appeal for those seeking some outdoor space. The property is also advertised with no onward chain.

The area is well served by public transport links into central Bristol, with regular bus services providing straightforward routes into the city centre and beyond. Nearby green spaces offer opportunities for walking and recreation, with local parks within easy reach. The location also benefits from access to nearby schools, making it a practical option for those planning for the future.

### **Entrance Hall**

### **Sitting / Dining Room**

17'0" x 13'6" (5.20 x 4.14)

### **Kitchen**

9'10" x 7'1" (3.00 x 2.17)

### **Bedroom One**

13'11" x 11'10" (4.25 x 3.61)

### **Bedroom Two**

10'6" x 8'10" (3.22 x 2.70)

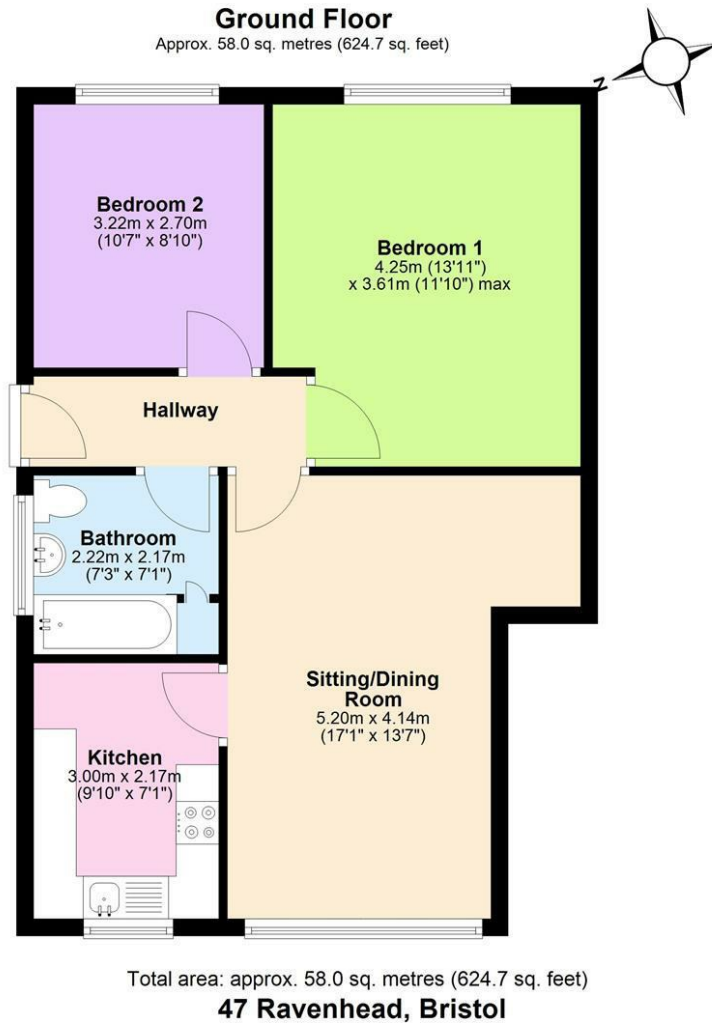
### **Bathroom**

7'3" x 7'1" (2.22 x 2.17)

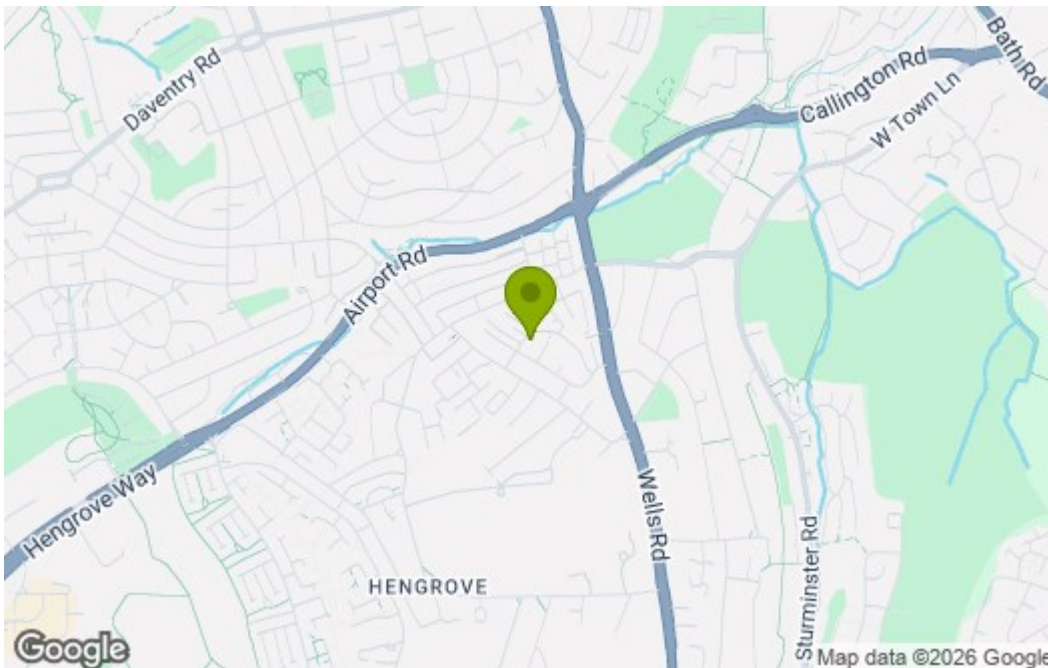
### **Rear Garden**

### **Garage**

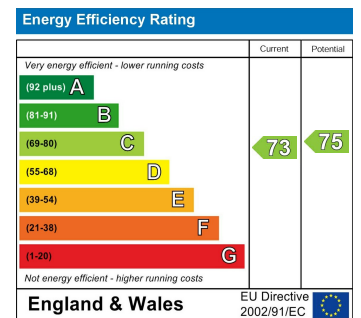
## Floor Plan



## Area Map



## Energy Efficiency Graph



These particulars, whilst believed to be accurate are set out as a general outline only for guidance and do not constitute any part of an offer or contract. Intending purchasers should not rely on them as statements of representation of fact, but must satisfy themselves by inspection or otherwise as to their accuracy. No person in this firm's employment has the authority to make or give any representation or warranty in respect of the property.