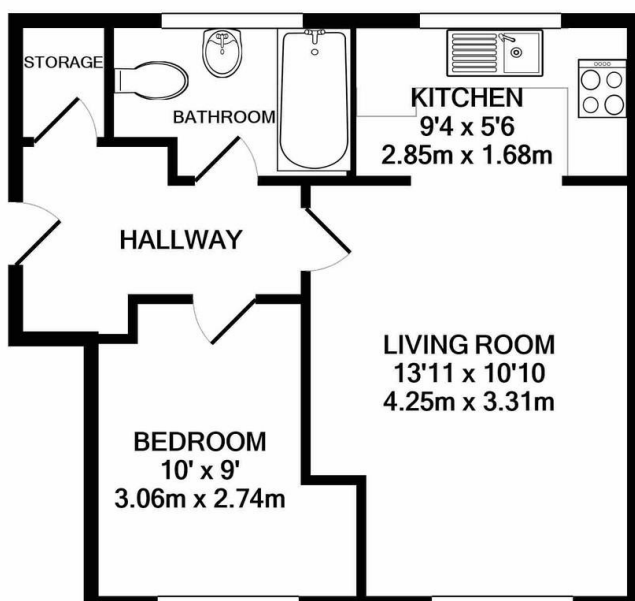




## TO LET

1 Bed Ground Floor Flat in Stoneygate Road, Leicester LE2 2AD  
£675 pcm

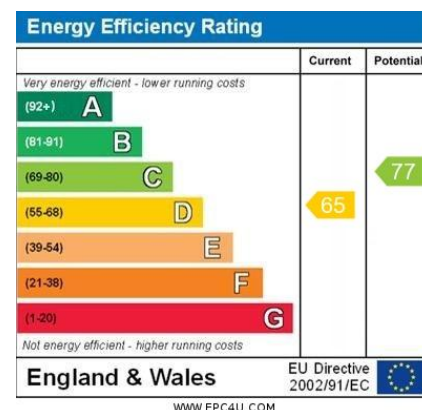
Charming one bedroom ground floor apartment in Stoneygate available for rent. Set in impressive communal grounds just off London Road, the property comprises entrance hall, bedroom, bathroom, living room and kitchen. There is parking at the property and the apartment is set within easy reach of the city centre or Clarendon Park's shops and bars. The property is offered unfurnished with washing machine and fridge freezer.



FLOORPLAN BY PHILLIPS GEORGE  
TOTAL APPROX. FLOOR AREA 371 SQ.FT. (34.5 SQ.M.)

Whilst every attempt has been made to ensure the accuracy of the floor plan contained here, measurements of doors, windows, rooms and any other items are approximate and no responsibility is taken for any error, omission, or mis-statement. This plan is for illustrative purposes only and should be used as such by any prospective purchaser. The services, systems and appliances shown have not been tested and no guarantee as to their operability or efficiency can be given

Made with Metropix ©2021



- One Bedroom Apartment
- Ground Floor
- Stoneygate Location
- Parking Available
- Unfurnished With White Goods
- Beautiful Setting
- Communal Grounds
- Convenient Location

**Agents Note:** Whilst every care has been taken to prepare these sales particulars, they are for guidance purposes only. All measurements are approximate are for general guidance purposes only and whilst every care has been taken to ensure their accuracy, they should not be relied upon and potential buyers are advised to recheck the measurements.

