



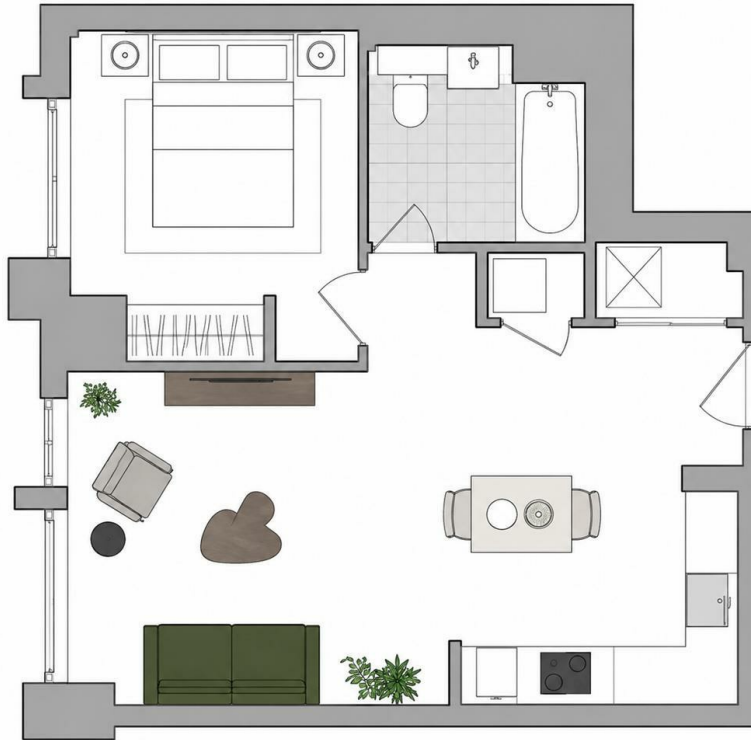
## **Bouchon Point, 7 Cendal Crescent**

, London E1 2FU

- 24-hour concierge service
- Private cinema room
- Co-working and business suite
- Close to Whitechapel Station
- CTB-D
- Fully equipped residents' gymnasium
- Residents' lounge
- Landscaped communal gardens and courtyards
- EPC-B

**£2,400 Per Month**

Local Authority **Tower Hamlets**  
Council Tax Band **D**  
EPC Rating **B**



**London Office Office**  
Spaces Victoria, 25 Wilton Road, Pimlico,  
London, SW1V 1LW

**Contact**  
020 3084 3094  
XL@londonvictoriagroups.co.uk  
www.londonvictoriagroups.co.uk

Agents Note: Whilst every care has been taken to prepare these particulars, they are for guidance purposes only. All measurements are approximate and for general guidance purposes only and whilst every care has been taken to ensure accuracy, they should not be relied upon and potential buyers/tenants are advised to recheck the measurements.