



14 Lynton Drive, Sutton-In-Ashfield
£415,000

 **NEWTON FALLOWELL**

14 Lynton Drive

Sutton-In-Ashfield

Tucked away on a quiet, exclusive row of just three homes, this striking four-bedroom detached property with lots of character is something truly special.

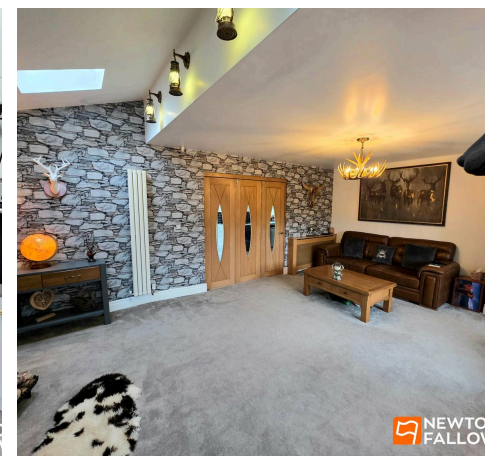
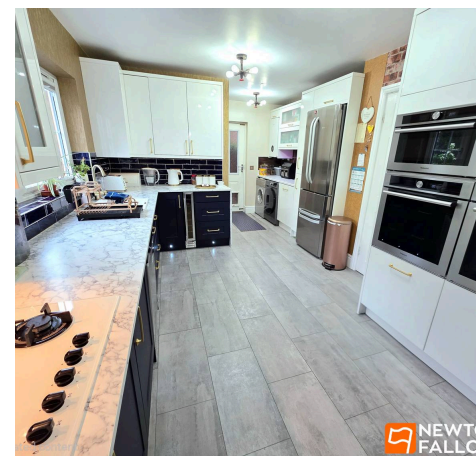
Council Tax band: D

Tenure: Freehold

EPC Energy Efficiency Rating: D

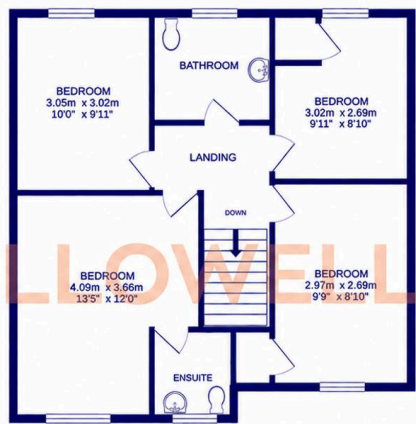
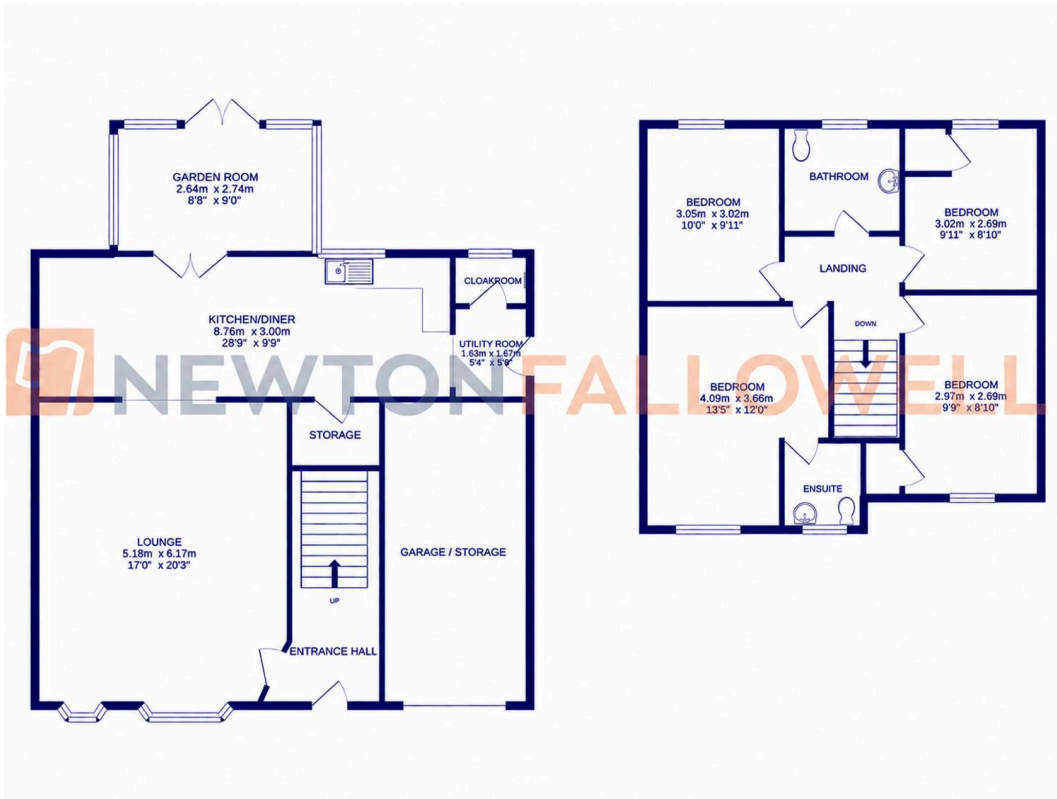
EPC Environmental Impact Rating: D

- Beautiful 4 Bedroom Property
- Detached with Driveway and Garage











Newton Fallowell Mansfield

Newton Fallowell Estate Agents, 13 Market Street - NG18 1JG

01623
424616

· Mansfield@newtonfallowell.co.uk

www.newtonfallowell.co.uk/mansfield-estate-agents/

 **NEWTON FALLOWELL**