
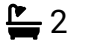





HOMES BY VICTORIA
ESTATE AGENCY

Bromsgrove Road, Redditch, B97 4RL

Offers Over £290,000

 3  2  1



Welcome to Bromsgrove Road, Redditch, an exceptional three double bedroom, three-storey semi-detached residence, beautifully designed to offer expansive and versatile living for the modern family. **OFFERED TO THE MARKET CHAIN FREE**

[homesbyvictoria.co.uk](https://www.homesbyvictoria.co.uk)

victoria@homesbyvictoria | 07833 136521

FOR M HOMES MIDLANDS LIMITED trading as Homes By Victoria Company Number: 13688840 VAT no: 470190115



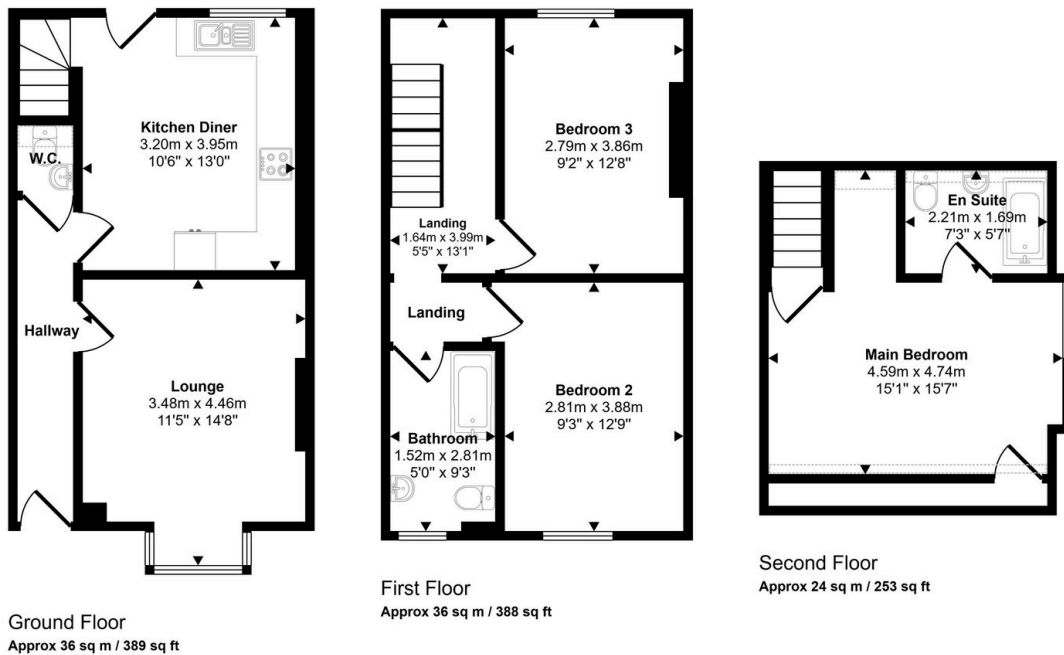
HOMES BY VICTORIA
ESTATE AGENCY



Key Features

- OFFERED TO THE MARKET CHAIN FREE
- LOCATED ON THE BROMSGROVE ROAD
- SPACIOUS VERSATILE ACCOMODATION
- LIGHT FILLED KITCHEN DINER
- LOUNGE
- DOWNSTAIRS WC
- MASTER WITH EN-SUITE BEDROOM
- FAMILY BATHROOM
- ENCLOSED REAR GARDEN
- BLOCK PAVED DRIVEWAY

Approx Gross Internal Area
96 sq m / 1031 sq ft



Denotes head height below 1.5m

This floorplan is only for illustrative purposes and is not to scale. Measurements of rooms, doors, windows, and any items are approximate and no responsibility is taken for any error, omission or mis-statement. Icons of items such as bathroom suites are representations only and may not look like the real items. Made with Made Snappy 360.