



43 Lilywhite Drive  
Cambridge, CB4 1GB

**Guide price £580,000**

## 43 Lilywhite Drive

Cambridge, CB4 1GB

- Energy rating B
- Two double bedrooms
- Popular development
- Driveway parking and garden

A stylish and contemporary, modern terraced house, with spacious 2 bedroom accommodation with parking and a garden, in a particularly convenient location.

This 874 sq. ft, terrace has bright, spacious accommodation with high ceilings and high-quality fittings and finishes.

The ground floor is open-plan, the living area has large windows and doors to the rear garden, and an understairs storage. The kitchen area is well-appointed and has quartz worktops as well as integrated appliances, including a five-ring gas hob, extractor, oven, microwave, fridge/freezer and dishwasher. There is a ground-floor cloakroom and WC.

Upstairs are two double bedrooms, both with full-height windows and built-in storage. The bathroom has a bath with a separate shower over, a vanity basin, and a WC with a concealed cistern. Part wall tiling





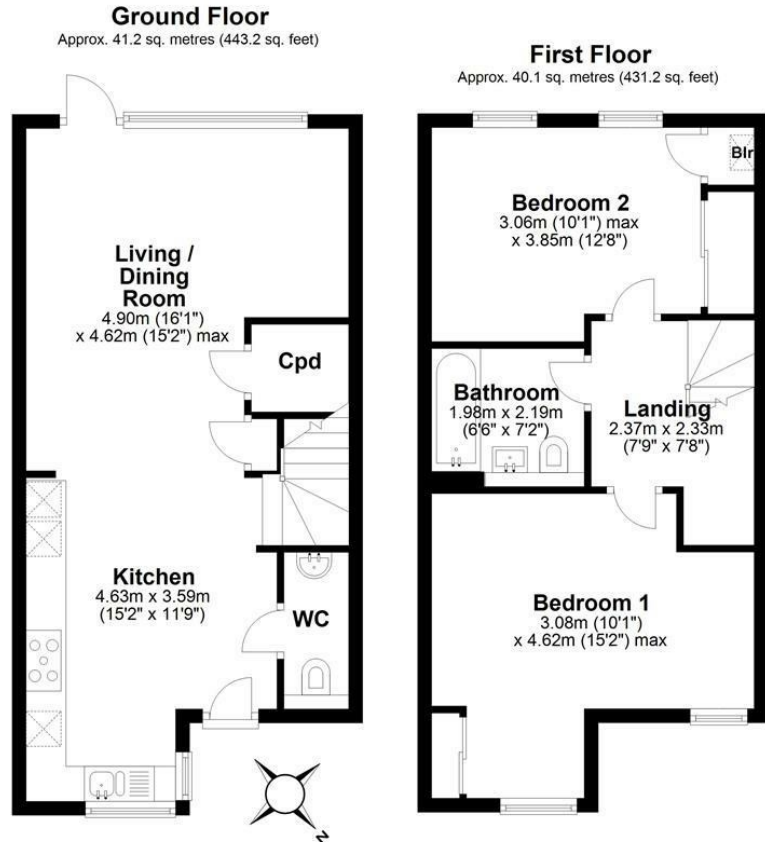
and a tower rail.

The house has double glazing, gas central heating with underfloor heating on the ground and first floors.

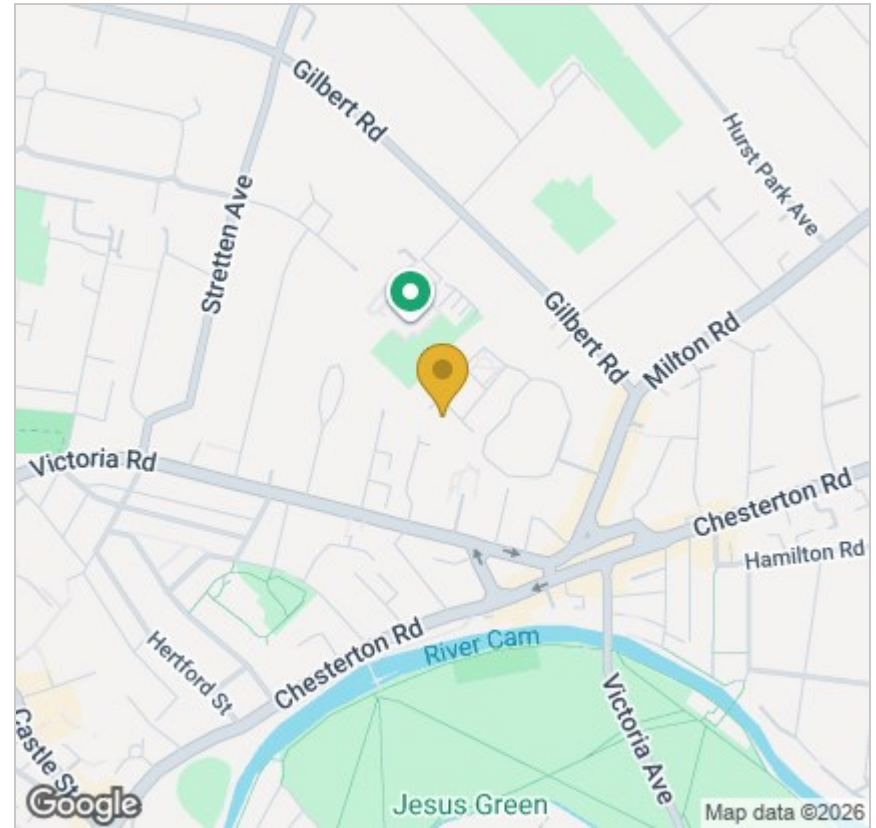
At the front, there is a block-paved driveway for parking, and private, purpose-built bike and bin stores. The rear garden is lawned and enclosed by fencing, there is a patio area and a shed.

What3words: ///during.ideas.bumpy





Total area: approx. 81.2 sq. metres (874.4 sq. feet)



### Energy Efficiency Graph

Energy Efficiency Rating		Current	Potential
Very energy efficient - lower running costs			
(92 plus) A			96
(81-91) B		84	
(69-80) C			
(55-68) D			
(39-54) E			
(21-38) F			
(1-20) G			
Not energy efficient - higher running costs			
England & Wales		EU Directive 2002/91/EC	

Tenure: Freehold.  
There is an estate management charge which is currently £353.09.  
Council tax band: D

These particulars, whilst believed to be accurate, are set out as a general outline only for guidance and do not constitute any part of an offer or contract. Intending purchasers should not rely on them as statements of representation of fact, but must satisfy themselves by inspection or otherwise as to their accuracy. No person in this firm's employment has the authority to make or give any representation or warranty in respect of the property.