



North Place, TW11

£949,999

This beautifully presented town house is nestled in a quiet location within central Teddington. This property benefits from a sunny south facing garden, three bedrooms, a driveway, and a garage. The house is in good condition and ready to move in to with no onward chain.

North Place is in a superb location for transport links and schools, primary and secondary, along with Bushy Park and Teddington High Street close by.

Features

- Central Location
- Four Double Bedrooms
- Off Street Parking & Garage
- Secluded South Facing Garden
- Good School Catchment
- Three Bathrooms



North Place, TW11

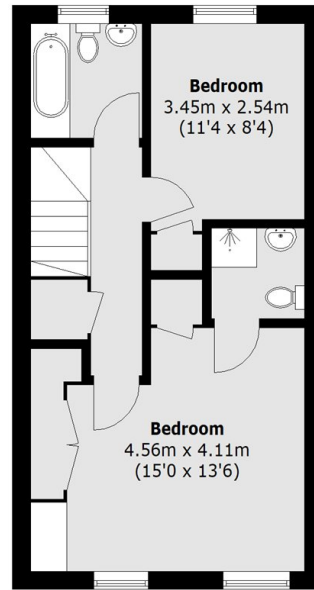
At the front of the house is a drive with ample off-street parking and a garage ideal for storage, a utility room and plenty of space to park a car. There is a downstairs cloakroom and a stunning semi open plan kitchen dining space with french doors leading out to the south facing garden.

On the first floor there is an incredibly spacious 'L' shaped reception room with a Juliet balcony. This floor also has a double bedroom and a bathroom. The master bedroom is on the top floor, featuring a stunning en-suite shower and built-in wardrobes. There is a further bedroom and a family bathroom.

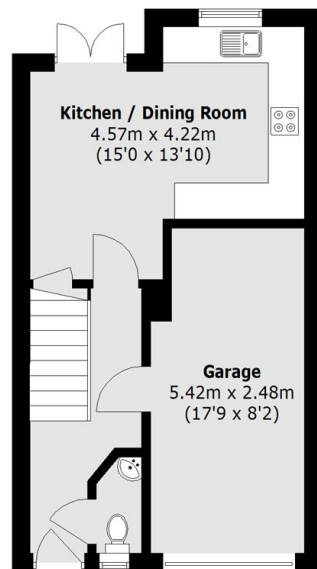
Outside the garden is very secluded providing ample room for seating, play, or planting, and offers great versatility.



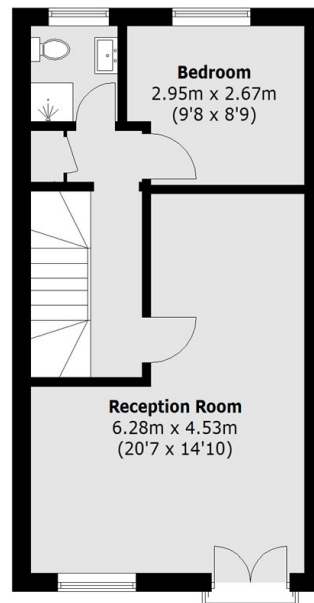
North Place, Teddington, TW11



Second Floor



Ground Floor



First Floor

Total area (approx.): 121.5 sq. m (1,307.8 sq. ft)
(Including Garage)