



Redcar
Letting & Sales
Company Ltd



**FOR
SALE**



Castle Road, Redcar, TS10

£169,500 Freehold

- Entrance Hallway
- Kitchen
- Two Bedrooms
- Driveway
- EPC Rated: C

- Lounge
- Bathroom
- Front Garden
- Rear Garden - Garage
- Council Tax: B

Castle Road, Redcar, TS10

We are delighted to welcome to the market this charming two bedroom semi-detached bungalow situated in a much sought after residential area offered for sale with no onward chain. Briefly the accommodation comprises; Entrance Hallway, Kitchen, Lounge, Two Bedrooms, Bathroom, Front & Rear Gardens, Garage, Driveway. EPC Rated: C Council Tax: B Tenure: Freehold Viewings are strictly via the Agent or view now via our 360 virtual tour: <https://view.ricoh360.com/ed4b7130-1235-47ee-bcc6-13255bd409ee>

Front Garden & Driveway

Lawn. Border with plants. Driveway leading to garage. Outside tap.

Entrance hallway 4'3" x 3'5"

Laminate flooring. uPVC door. Pendant light.

Kitchen 8'6" x 13'1"

Laminate flooring. uPVC side entrance door. 2x uPVC windows. Window blinds. Radiator. Alarm. Wall and base units. Stainless steel sink with mixer tap. Electric cooker with gas hob. Extractor fan. Plumbing for washing machine. Pendant light.

Lounge 12'2" x 14'6"

Carpet. uPVC window. Curtain pole. Blinds. Radiator. Gas fire with surround. TV aerial. NTL internet connection point. Pendant light. Carbon monoxide detector.

Hallway 3'4" x 2'6"

Carpet. Smoke detector. Heating controls and timer.

Bathroom 9'3" x 4'9"

Laminate flooring. Partly tiled walls. Radiator. uPVC window. White bath with shower over. White sink. White toilet. Mirror. Toilet roll holder and two towel rails.

Bedroom 1 9'6" x 11'9"

Carpet. uPVC window. Blinds and curtain pole. Radiator. Pendant light.

Bedroom 2 11'7" x 8'1"

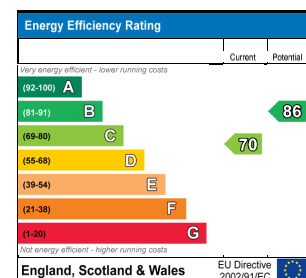
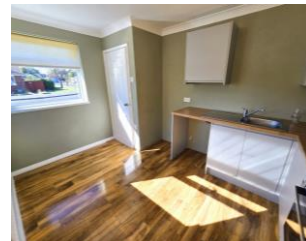
Carpet. uPVC window. Blinds and curtain pole. Radiator. Pendant light.

Rear garden

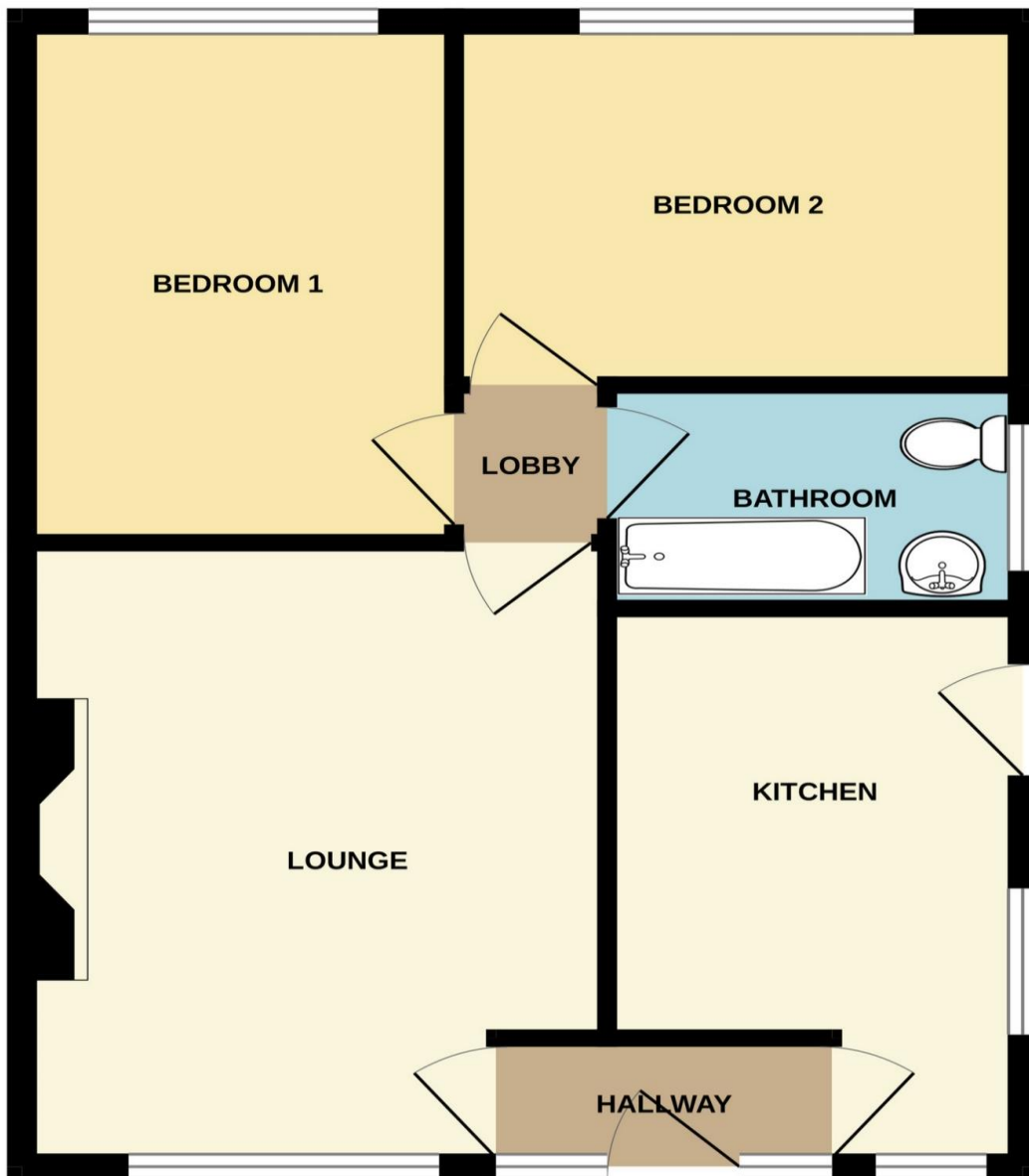
Paved areas and laid to lawn.

Garage

Roller shutter door. Strip light and pendant light. Electric sockets.



GROUND FLOOR



Whilst every attempt has been made to ensure the accuracy of the floorplan contained here, measurements of doors, windows, rooms and any other items are approximate and no responsibility is taken for any error, omission or mis-statement. This plan is for illustrative purposes only and should be used as such by any prospective purchaser. The services, systems and appliances shown have not been tested and no guarantee as to their operability or efficiency can be given.
Made with Metropix ©2025

Whilst every care is taken to ensure the accuracy of these details no responsibility for errors or misdescription can be accepted nor is any guarantee offered in respect of the property. These particulars do not constitute any part of an offer or contract.