



101 Wellington Street

New Whittington, Chesterfield, S43 2BQ

Asking Price £160,000



101 Wellington Street

New Whittington, Chesterfield, S43

A beautifully styled, spacious and practically set-out 2 bedroom mid-terrace home, tastefully modernised to an exceptional standard retaining much of the property's original charm complimented effortlessly with contemporary touches.

Offering 1022 sqft of accommodation over 3 storeys, the property features a modern kitchen with integrated oven, lounge with exposed brick fireplace, 2 very well proportioned bedrooms, a chic bathroom with bath and overhead shower, a flexible use loft room ideal for a further reception room of work-from-home space and a cellar, perfect for storage or a utility space.

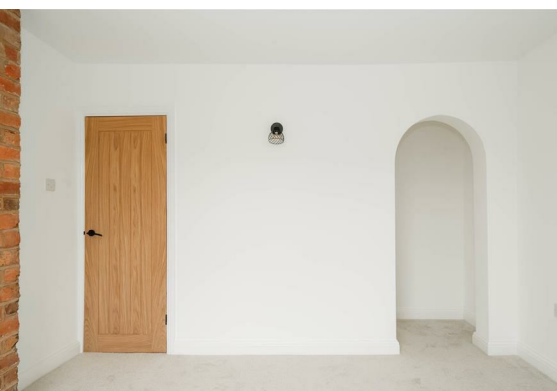
The ground floor comprises; lounge with exposed brick feature fireplace, modern but timeless kitchen with wood worktops and an integrated oven, rear entrance hall and a ground floor WC.

The first floor comprises; 2 very well proportioned double bedrooms and a bathroom.

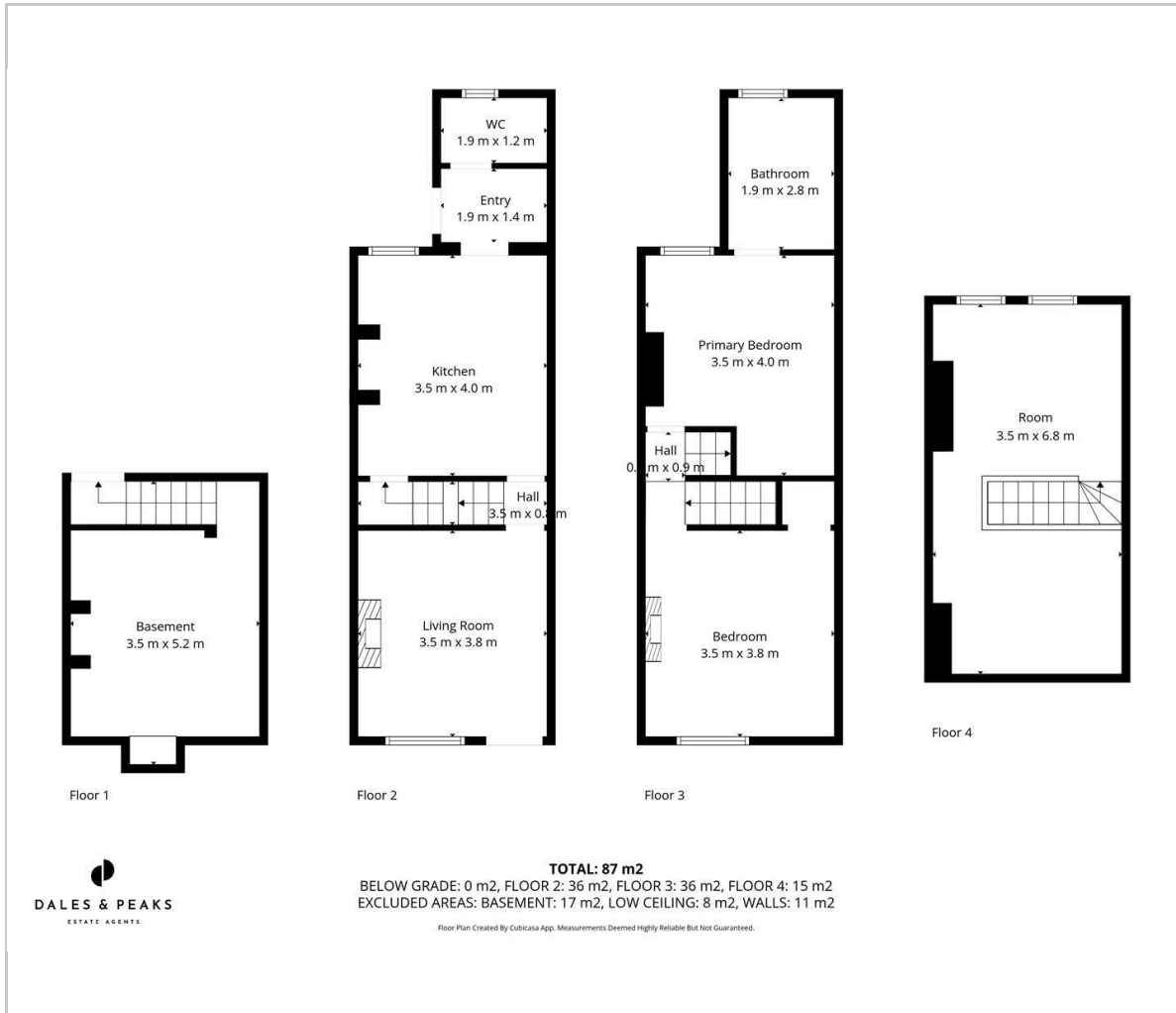
The second floor comprises; a flexible use loft room, ideally suited for a further reception room or work-from-home space.

**Dales & Peaks ForwardMove
please read**

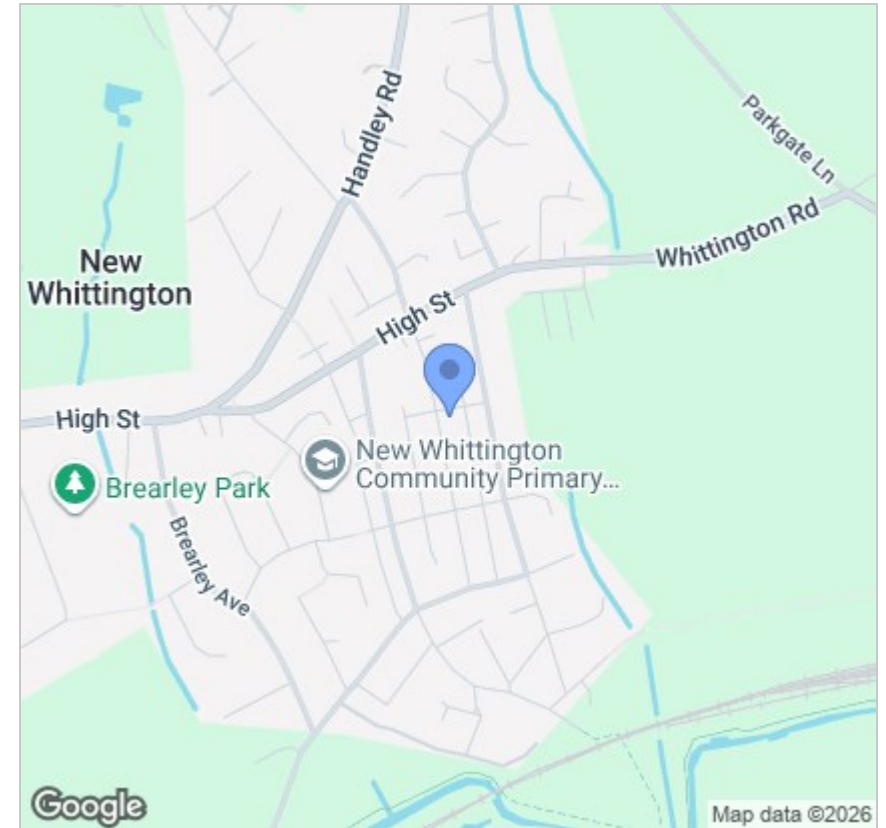




Floor Plan



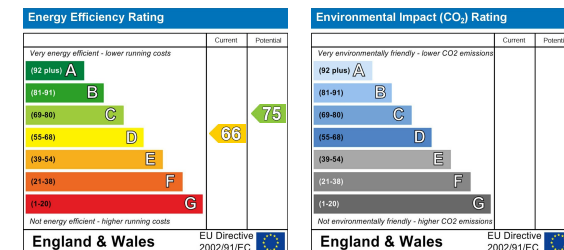
Area Map



Viewing

Please contact our Chesterfield Office on 01246 567540 if you wish to arrange a viewing appointment for this property or require further information.

Energy Efficiency Graph



These particulars, whilst believed to be accurate are set out as a general outline only for guidance and do not constitute any part of an offer or contract. Intending purchasers should not rely on them as statements of representation of fact, but must satisfy themselves by inspection or otherwise as to their accuracy. No person in this firm's employment has the authority to make or give any representation or warranty in respect of the property.



131 Chatsworth Road, Chesterfield, Derbyshire, S40 2AP
T: 01246 567540

E: info@dalesandpeaks.co.uk
www.dalesandpeaks.co.uk