

SOUTH BLOCK, SE1

£2,500 pcm

A modern one bedroom apartment benefitting from spacious interiors and high ceilings within the sought after County Hall development. Situated just moments from the South Bank, the property enjoys stylish furnishings, secure parking and excellent on-site facilities.

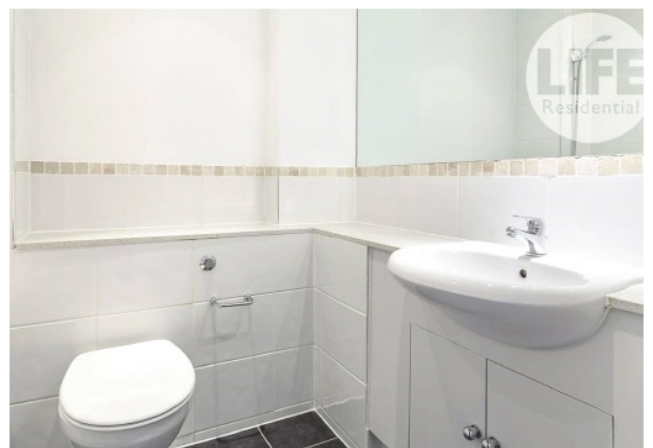
- 1-Bedroom Apartment
- Fully Furnished
- 24-Hour Concierge
- Communal Courtyard
- On-site Leisure Facilities
- Parking Available



ABOUT THE HOME

Located on an upper floor with lift access, the apartment enjoys a bright, elevated position and comes complete with thoughtfully selected furnishings ready for immediate occupation. As a resident, you'll enjoy exclusive access to a private health and fitness suite, including a gym, swimming pool and spa, as well as the peace of mind provided by a 24-hour concierge. Secure parking is also available by separate arrangement.

Set in the heart of Waterloo, you're moments from the South Bank's world-class culture, dining and entertainment, with the London Eye, Royal Festival Hall, and National Theatre on your doorstep. For commuters, Waterloo Station is just a short walk away, connecting you to the Bakerloo, Northern, Jubilee and Waterloo & City lines, plus National Rail services, putting the whole of London and beyond within easy reach.



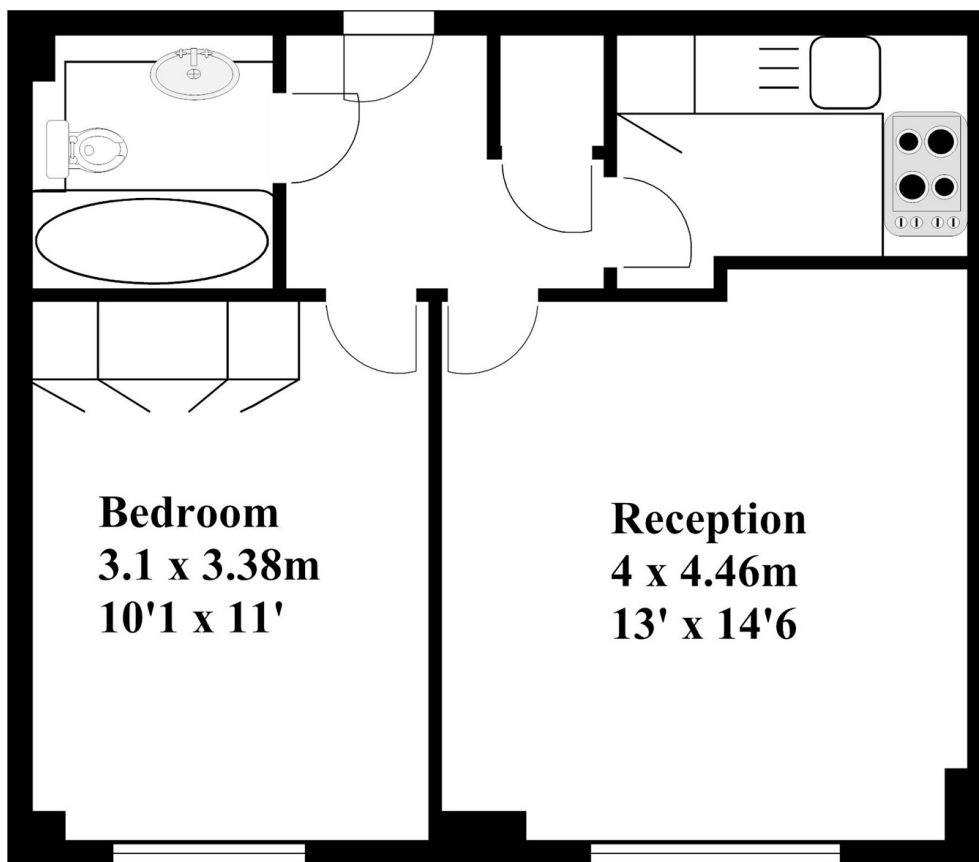


**Belvedere Road
London
SE1**



**Approx. Gross Internal Area = 45m square
= (481ft square)**

4th Floor



**Plan produced by HP. Source.
For illustrative purposes only.
Not to scale.
Tel-07766340073**

LiFE RESIDENTIAL

252 Westminster Bridge
Road, London, SE1 7PD
Sales: 020 7476 0125
Lettings: 020 7620 1600

Energy Rating: C. We aim to make our particulars both accurate and reliable. However they are not guaranteed; nor do they form part of an offer or contract. If you require clarification on any points then please contact us, especially if you're traveling some distance to view. Please note that appliances and heating systems have not been tested and therefore no warranties can be given as to their good working order.