

Flat 2c Middlemore Road Birmingham, B31 3UP

****UNFURNISHED ONLY ****

£550PCM

1 bedroom flat, comprising of kitchen including white goods, bathroom with shower over bath, comfortable living area and bedroom. Double glazed with gas central heating throughout. In EXCELLENT LOCATION, opposite Northfield train station with local supermarket within 2 mins walk. Suitable for full time working professionals or students.

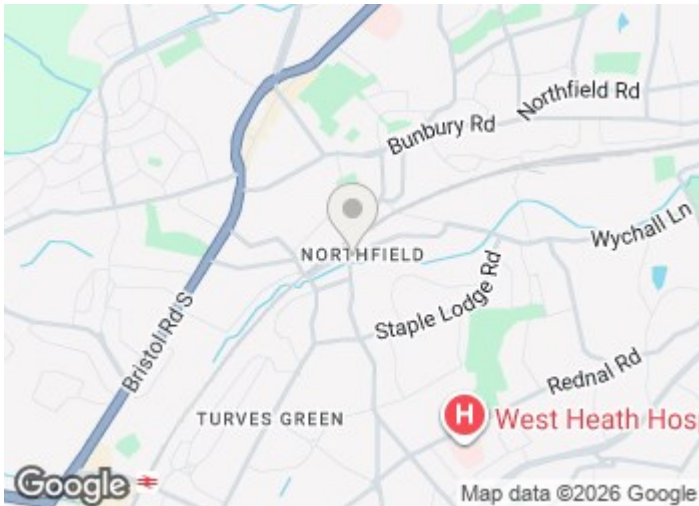
EPC Rating E

COUNCIL TAX BAND: A

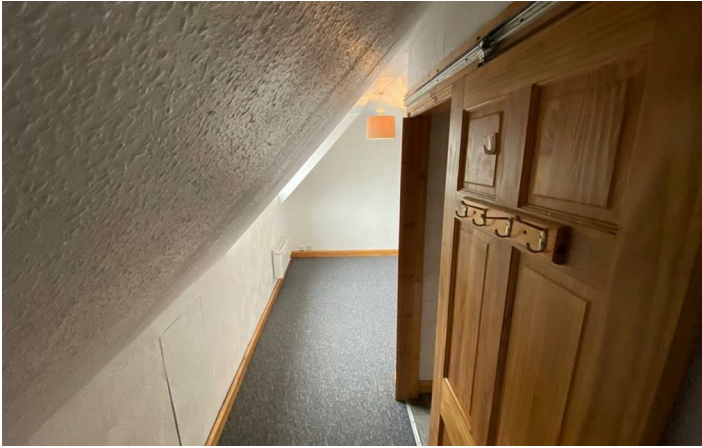
£550 PCM

Flat 2c Middlemore Road

Birmingham, B31 3UP

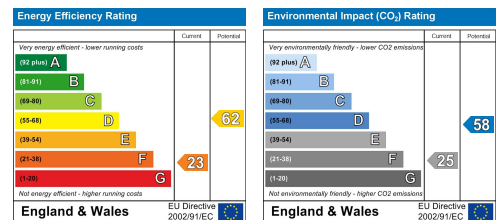


[Directions](#)



Floor Plan

These particulars, whilst believed to be accurate are set out as a general outline only for guidance and do not constitute any part of an offer or contract. Intending purchasers should not rely on them as statements of representation of fact, but must satisfy themselves by inspection or otherwise as to their accuracy. No person in this firm's employment has the authority to make or give any representation or warranty in respect of the property.



543 Bristol Road, Selly Oak, Birmingham B29 6AU. T: 0121 472 3331 Website: www.direct-housing.co.uk
E-mail: sellyoak@direct-housing.co.uk lettings@direct-housing.co.uk accounts@direct-housing.co.uk

