

# 16 Stewart Court

## Epping

Spacious, bright and airy, this one bedroom retirement apartment just a short walk to Epping high street and station, comes with beautiful communal grounds and parking. A lovely spot to live, welcome to Stewart Court.

Council Tax band: D

Tenure: Leasehold

- One bedroom retirement home
- Ground floor apartment
- Parking & communal gardens
- Communal reception area, laundry room and guest suite
- Shower room
- Short walk to Epping station and high street



**Hallway**

**Living / Dining**

23' 7" x 10' 10" (7.20m x 3.30m)

**Kitchen**

8' 6" x 7' 7" (2.60m x 2.30m)

**Bedroom**

19' 4" x 9' 2" (5.90m x 2.80m)

**Shower Room**

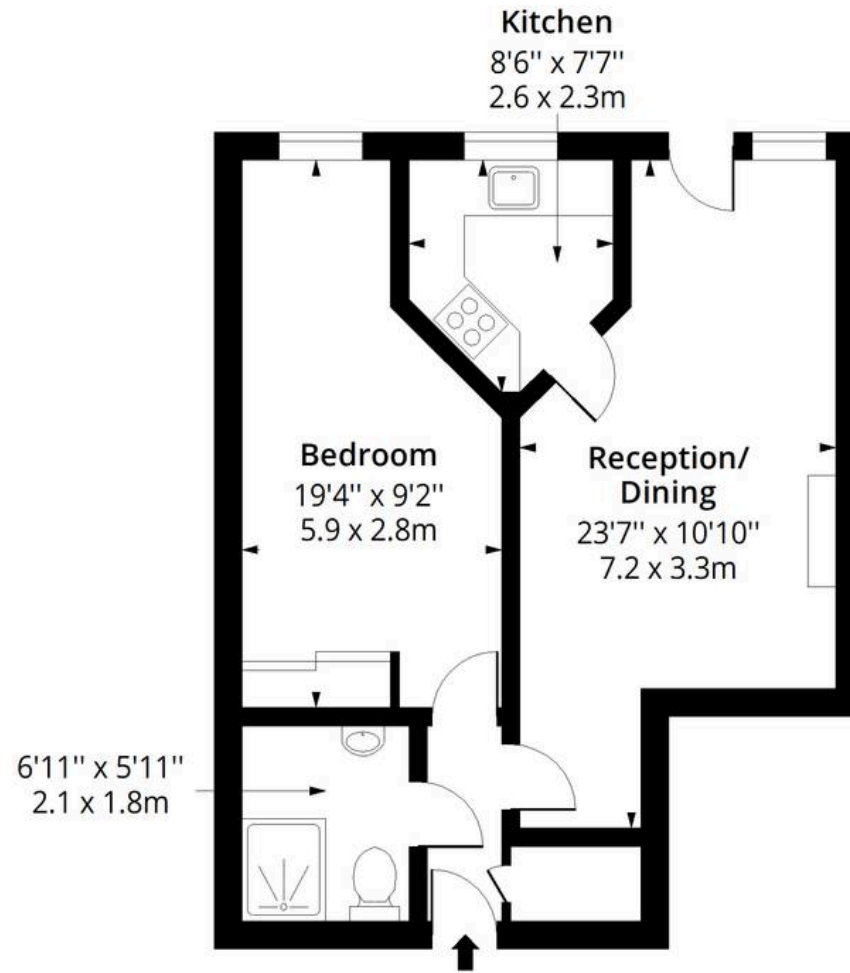
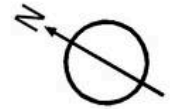
6' 11" x 5' 11" (2.10m x 1.80m)





# Stewart Court CM16

Approx. Gross Internal Area 508 Sq Ft - 47.19 Sq M



## Ground Floor

Floor Area 508 Sq Ft - 47.19 Sq M



Measured according to RICS IPMS2. Floor plan is for illustrative purposes only and is not to scale. Every attempt has been made to ensure the accuracy of the floor plan shown, however all measurements, fixtures, fittings and data shown are an approximate interpretation for illustrative purposes only. 1 sq m = 10.76 sq feet.

Date: 15/6/2026