



OFFORD ROAD LONDON N1
£1,495 PER WEEK AVAILABLE 30/09/2026




Hamptons

THE HOME EXPERTS

{ THE PARTICULARS

Offord Road London N1

£1,495 Per Week
Furnished

-  2 Bedrooms
-  2 Bathrooms
-  1 Reception

Features

- ***ALL BILLS INCLUDED WITHIN THE RENT***, - Architecturally Designed, - Two Bedrooms, - Two Bathrooms, - Stunning Finish Throughout, - Private Garden, - Side Entrance, - Offered Furnished, - Plenty of Natural Light, - Council Tax - Band D

Council Tax

Council Tax Band D

Hamptons
97-99 Upper Street
Islington, London, N1 0NP
0207 359 5675
islingtonlettings@hamptons-int.com
www.hamptons.co.uk

The Property

SHORT LET: Architecturally designed and refurbished throughout is this stunning two bedroom, two bathroom split level apartment. The property offers a comfortable and modern living space. As you enter the apartment, you are greeted by a spacious open-plan living and dining area, featuring large windows to the front and giant swiveling door to the rear that not only provides access to the tranquil private outside space but allows ample natural light to flood the space. The tastefully designed kitchen is equipped with state of the art appliances and offers plenty of storage and countertop space. The two bedrooms and bathrooms are on the lower level and are very well appointed. The main bedroom also features a small patio with light wells from above that continue the flow of natural light through the property. Situated in Islington, this apartment benefits from being in one of London's most desirable areas. The area offers a plethora of amenities and entertainment options, including trendy boutiques, popular restaurants, and buzzing bars. Additionally, the area boasts excellent transport links.



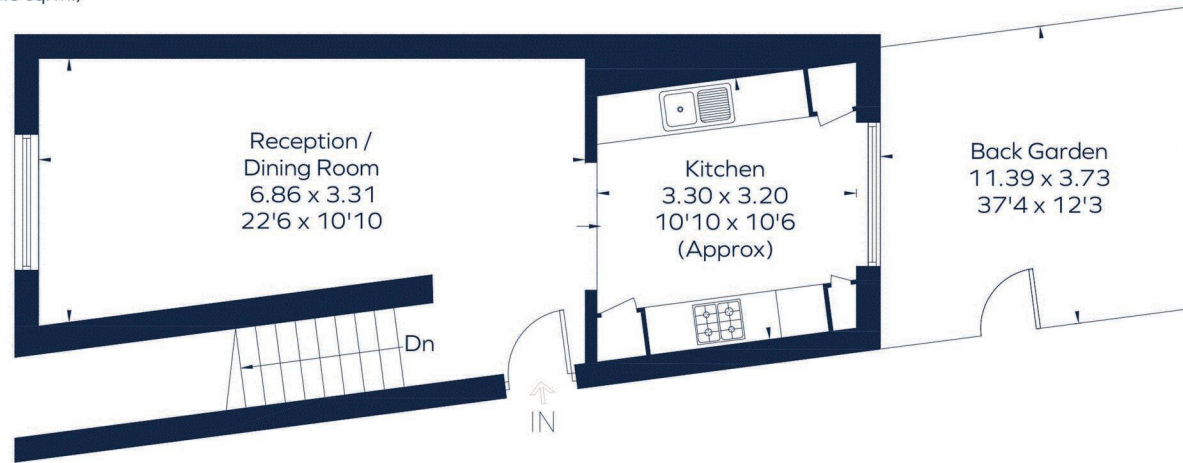
OFFORD ROAD

Approximate Gross Internal Area

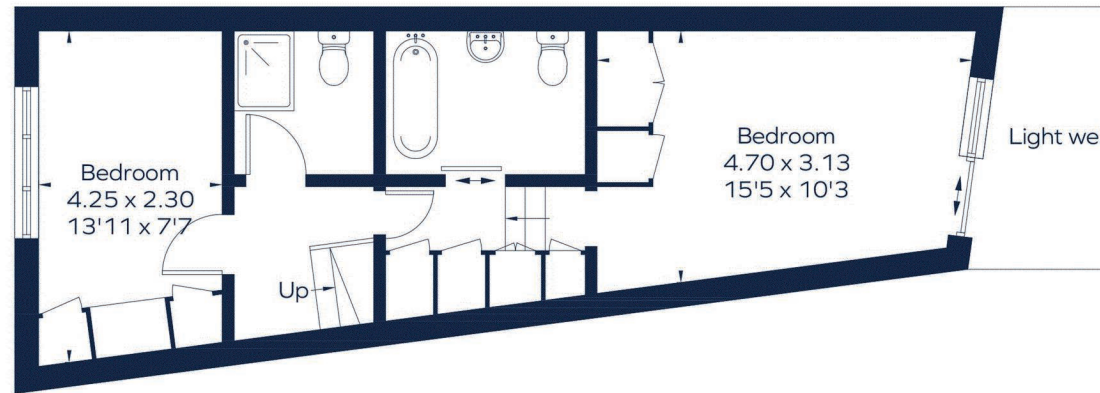
Lower Ground floor = 430 sq. ft. (40 sq. m.)

Ground floor = 414 sq. ft. (38.5 sq. m.)

Total = 844 sq. ft. (78.5 sq. m.)



Ground Floor



Lower Ground Floor

This plan is for layout guidance only. Not drawn to scale unless stated. Windows and door openings are approximate. Whilst every care is taken in the preparation of this plan, please check all dimensions, shapes and compass bearings before making any decisions reliant upon them. ID 998124

For Clarification

We wish to inform prospective tenants that we have prepared these particulars as a general guide and they have been confirmed as accurate by the landlord. We have not verified permissions, nor carried out a survey, tested the services, appliances and specific fittings. Room sizes are approximate and measurement figures rounded: they are taken between internal wall surfaces and therefore include cupboards/shelves, etc. Accordingly, they should not be relied upon for

carpets and furnishings. It should also be noted that all fixtures and fittings, carpeted, curtains/blinds, kitchen equipment and garden statuary, whether fitted or not, are deemed removable by the landlord unless specifically itemised with these particulars. Please enquire in office or on our website for details on holding deposit and tenancy deposit figures.

Energy Efficiency Rating		Current	Potential
Band A	92-100		
Band B	81-91		
Band C	69-80		
Band D	55-68		
Band E	39-54		
Band F	22-38		
Band G	1-21		
		58	78
<small>For energy efficient lighting (see EPC)</small> <small>EU Directive 2002/91/EC</small>		England & Wales	

