

A photograph of a room interior. On the left, a tall wooden shelf stands against a white wall. Next to it is a large blue wall section. A black TV mount is attached to the blue wall. To the right, a white wall features a small arched window and a black geometric wall sculpture. A white door with an arched top is on the far right. The floor is covered in grey carpeting. A single light fixture is visible on the ceiling.

Burder Street

Loughborough

2 Bed Terraced House • LE11 1JJ • £900 pcm • £1,030 Deposit



Burder Street, Loughborough

Recently refurbished throughout and presented in fantastic condition, this two-bedroom house is now available to let. This unfurnished property includes a lounge, dining area, kitchen, conservatory, two bedrooms, bathroom, and downstairs toilet. The property also includes a low maintenance garden with gated side access to the front of the property.

Lounge

A bright and spacious lounge, situated upon entrance of the property, with access to the stairs.

Dining Room

A bright and spacious dining room, with understairs storage and access to the kitchen.

Kitchen

A newly installed long, modern kitchen situated to the rear of the property. Includes a washing machine, fridge/freezer and also oven and hob.

Conservatory

Offering views of the garden with practical tile flooring.

Master Bedroom

A large double bedroom, overlooking the front of the property, with a built in closet for storage space.

Bedroom Two

A second double bedroom on the first floor, overlooking the rear garden.

Bathroom

Set on the first floor, a sizeable modern three-piece bathroom. Including a bath, sink, toilet and shower above the bath.

Garden

Accessed via the side gate and conservatory French doors, a sizeable garden with a seating area.

Parking

Parking Permit.

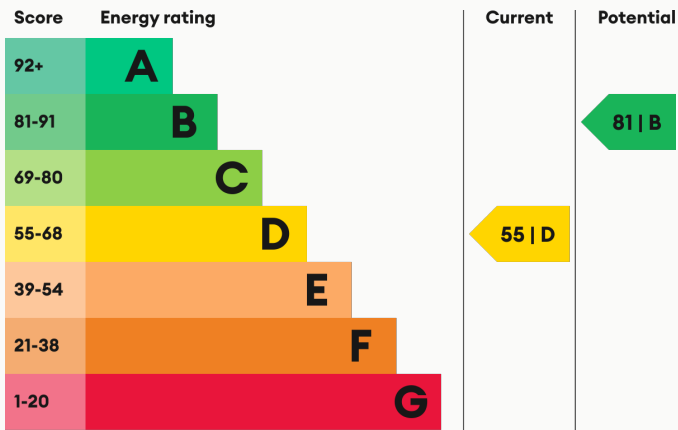
Heating

Gas-fired central heating.

Glazing

Modern, good quality, uPVC double glazing.

Energy Performance



We aim to make our particulars both accurate and reliable. However they are not guaranteed; nor do they form part of an offer or contract. If you require clarification on any points then please contact us, especially if you are traveling some distance to view. All measurements are to widest point.



Lounge



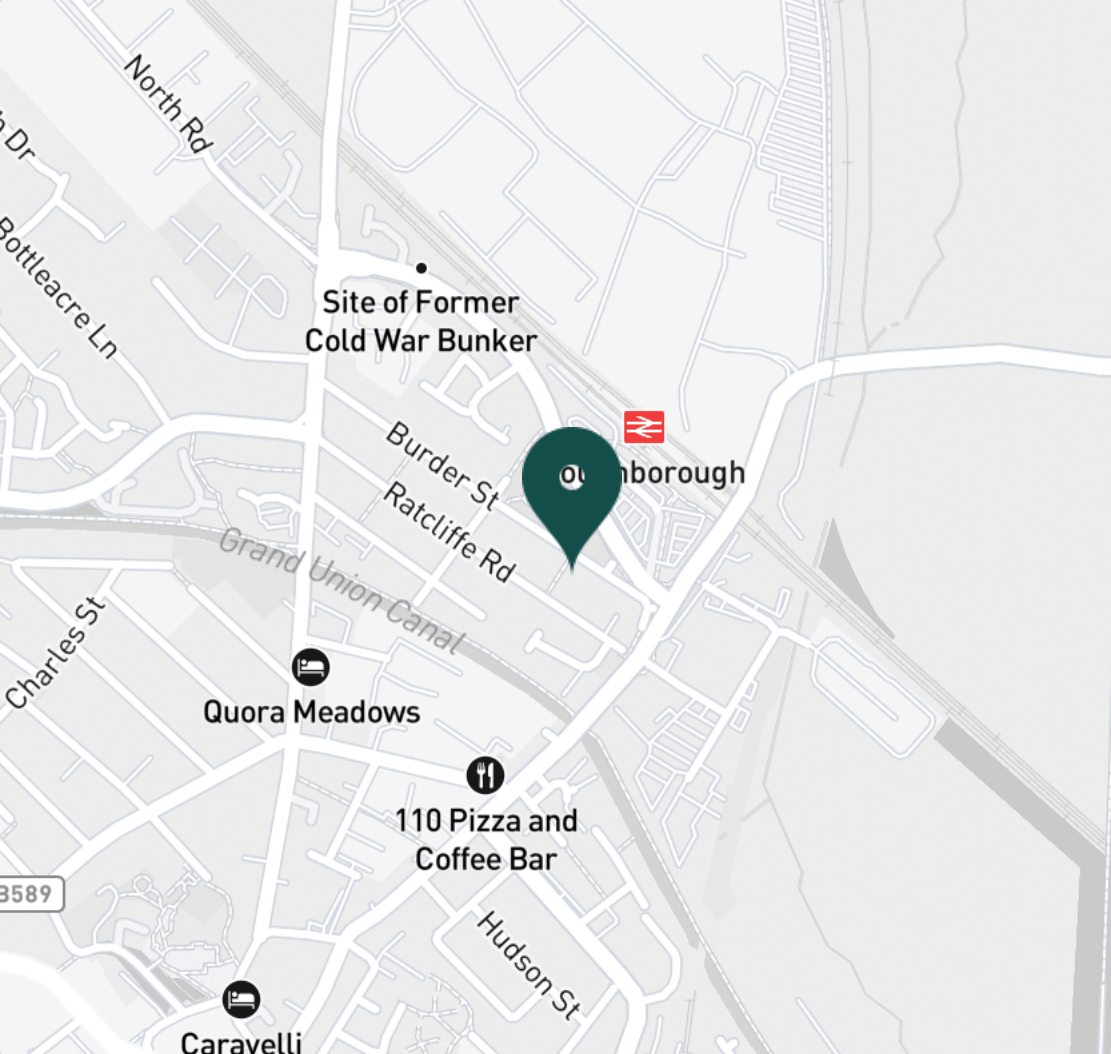
Lounge



Kitchen



Kitchen



SUPERMARKETS

Aldi Loughborough	0.7 mi
Tesco Superstore Loughborough	0.9 mi
Marks & Spencer	1.0 mi
Lidl Loughborough	1.1 mi
Sainsburys Loughborough	1.2 mi

GYMS

CrossFit Loughborough	0.4 mi
PureGym Loughborough	0.7 mi
Anytime Fitness Loughborough	0.8 mi
Dynamite Gym Ltd	1.0 mi
NPC Performance Centre	1.3 mi

TRAIN STATIONS

Loughborough	0.6 mi
Barrow upon Soar	4.3 mi
Sileby	6.3 mi
East Midlands Parkway	10.4 mi
Syston	10.6 mi

NURSERY SCHOOLS

Babblebrooke Day Nursery	0.7 mi
Cobden Childrens Centre	0.8 mi
Small World Nursery	1.1 mi
Lime Tree Nursery	1.2 mi
Busy Bees in Loughborough	1.4 mi

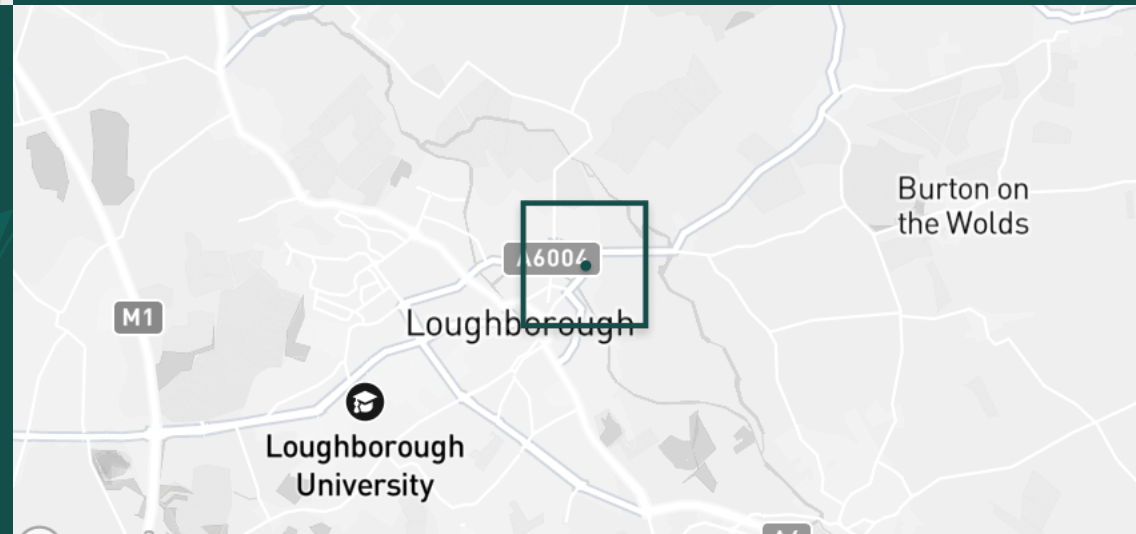
PRIMARY SCHOOLS

Rendell Primary School	0.5 mi
Cobden PS	1.0 mi
Fairfield Preparatory Sch	1.3 mi
St Marys Catholic PS	1.3 mi
Loughborough CE PS	1.5 mi

HIGH SCHOOLS

Limehurst Academy	0.6 mi
RNIB College Loughborough	1.6 mi
Our Lady's Convent Sch	1.6 mi
Loughborough High Sch	1.7 mi
Loughborough Grammar Sch	2.0 mi

Discover
Loughborough



- ✓ Loughborough
- ✓ Close to Amenities
- ✓ Close to Loughborough Train Station
- ✓ Excellent Condition
- ✓ Two Bedroom
- ✓ Garden

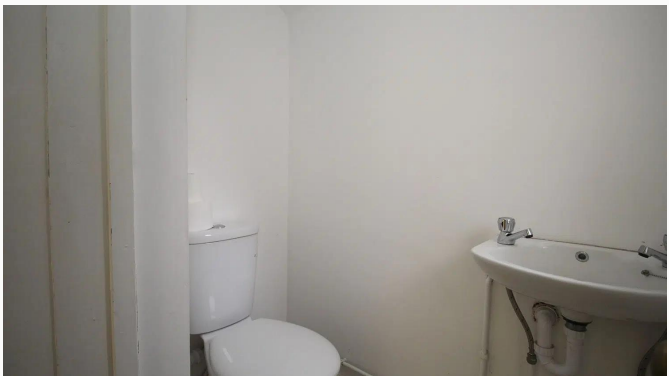




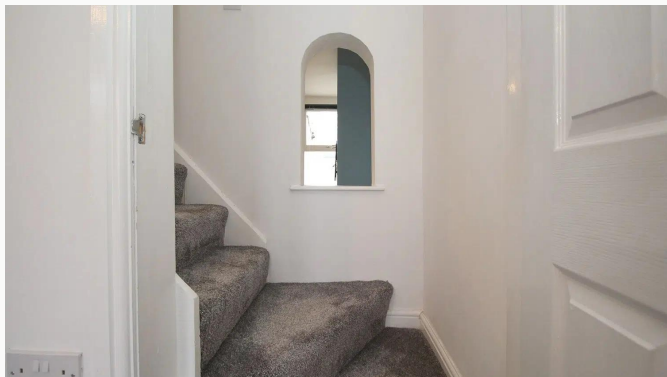
Conservatory



Conservatory



Downstairs W/C



Stairs



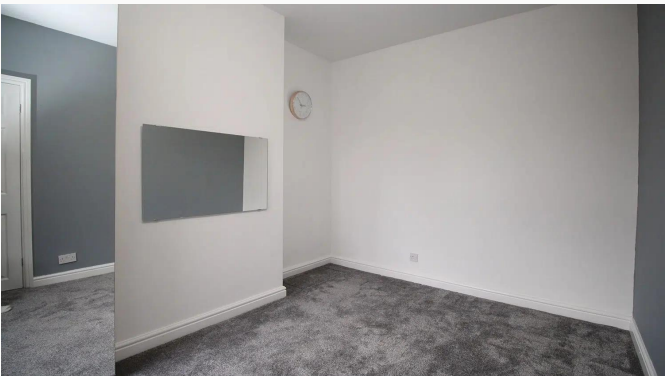
Master Bedroom



Master Bedroom



Master Bedroom



Bedroom Two



Bedroom Two



Bedroom Two



Bathroom



Bathroom



Garden



Garden



Back of Property



Front of House

Available
From 16/01/2026

Comes
Unfurnished

Bedrooms
2

Receptions
2

Bathrooms
1

Parking
With permit

Postcode
LE11 1JJ

Rent
£900 pcm

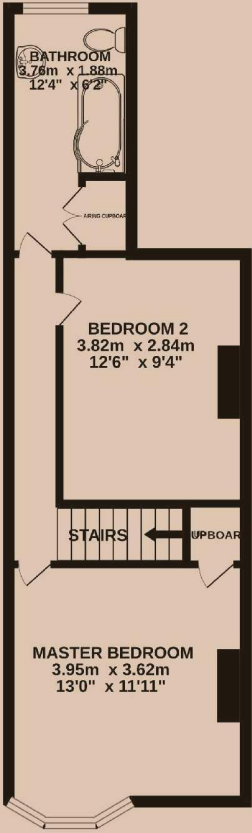
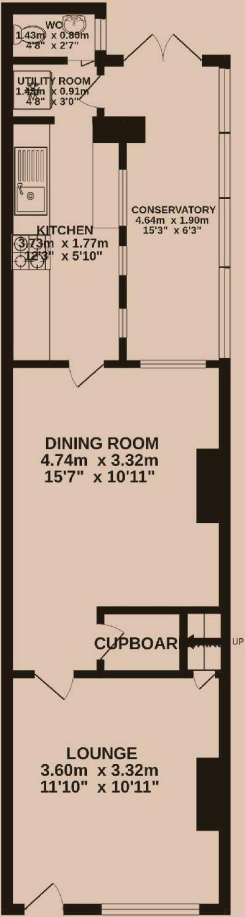
Deposit
£1,030

EPC
55 | D

Council Tax Band
A

ID
#16050

Updated
19/01/2026



Have a property like this? Let's work together.

Design and marketing are at the heart of our approach. With most people now looking for property online, we can get our clients' properties in front of as many people as the most prominent national agents. Where we differ is in the quality of our work. We create stunning digital particulars that highlight the individual attributes of every property we market, with videos and floor plans as standard.



OUR OFFICE
7 Biggin Street
Loughborough, LE11 1UA

CONTACT US
01509 320 320
let@huntleys.net

