



Whitechapel High Street, E1, London

£2,250 pcm

Welcome to Whitechapel High Street, E1.

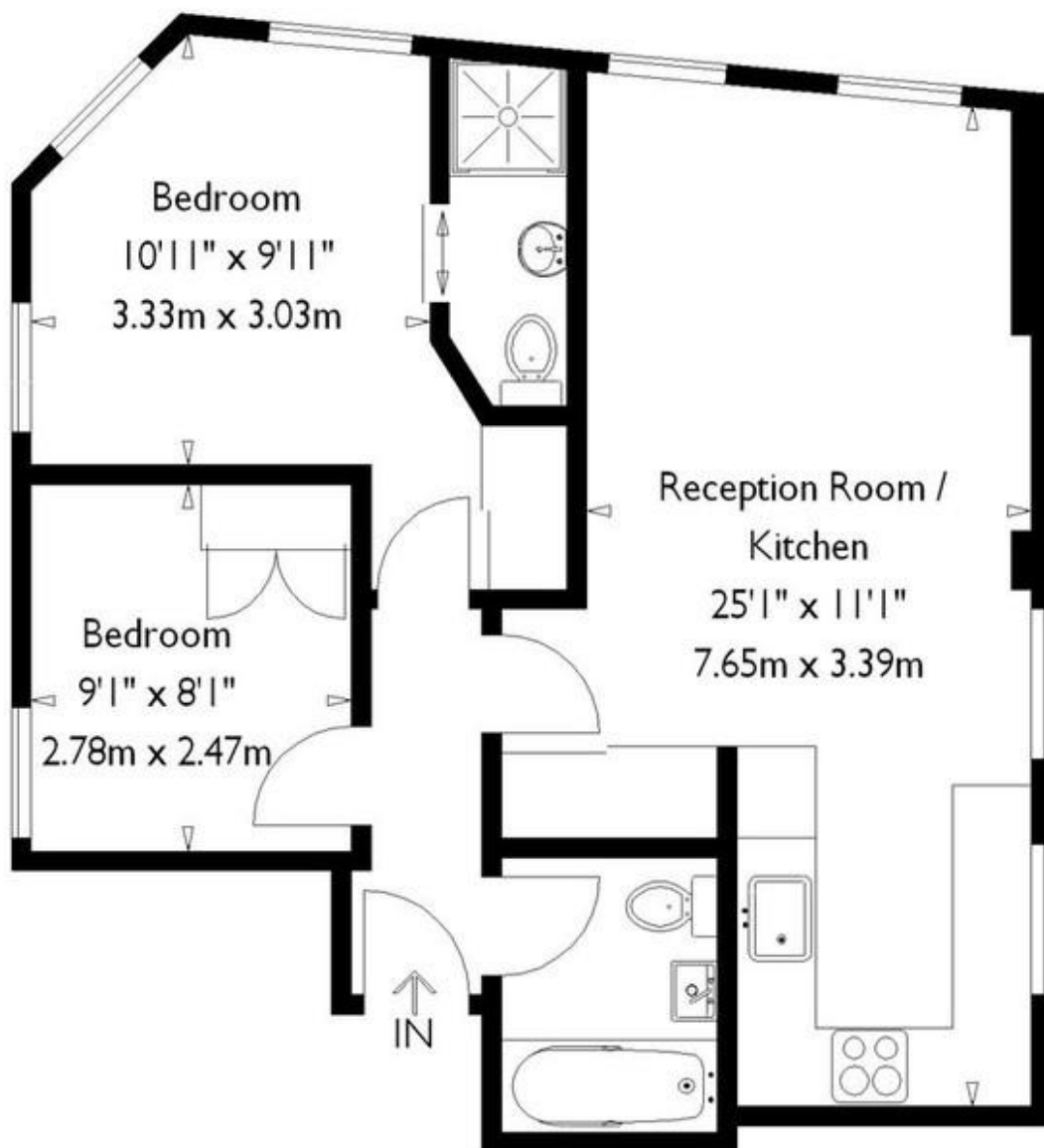
A well-presented two-bedroom apartment in good condition, ideally located on Whitechapel High Street, E1. Offered part furnished and available from April 2026, this bright property benefits from an abundance of natural light throughout.

The accommodation includes two bedrooms, one of which features a private en suite, making it ideal for sharers or professionals. The property enjoys a fantastic central location with excellent transport links and is close to a wide range of shops and local amenities, offering convenience and city living at its best.

- **Two bedrooms**
- **Available April 2026!**
- **Fantastic location**
- **Abundance of natural light**
- **Good Condition**
- **Part Furnished**
- **Good transport links**
- **Close to shops and Amenities**
- **One en suite**
- **Viewing Recommended**

Whitechapel High Street, E1

Approximate Gross Internal Area = 592 sq ft / 55 sq m



MONEY LAUNDERING REGULATIONS 2003: Intending purchasers will be asked to produce identification documentation at a later stage and we would ask for your co-operation in order that there will be no delay in agreeing the sale.

General: While we endeavour to make our sales particulars fair, accurate and reliable, they are only a general guide to the property and, accordingly, if there is any point which is of particular importance to you, please contact the office and we will be pleased to check the position for you, especially if you are contemplating travelling some distance to view the property.

Measurements: These approximate room sizes are only intended as general guidance. You must verify the dimensions carefully before ordering carpets or any built-in furniture.

Services: Please note we have not tested the services or any of the equipment or appliances in this property, accordingly we strongly advise prospective buyers to commission their own survey or service reports before finalising their offer to purchase.