



34 Dart Walk, Exeter, EX2 7QF

To Let £1,100 PCM

robson
lettings
Dedicated Lettings & Property Advisers

- First Floor Apartment
- Available Mid July
- Unfurnished
- Long Term Let
- Allocated Parking
- Council Tax Band B
- Superb Location with excellent access to all transport links

THE PROPERTY

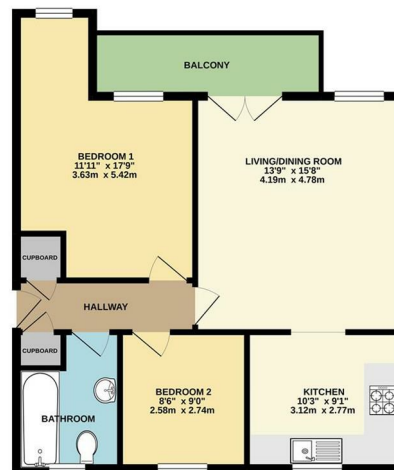
This first floor apartment is located close to a wide range of amenities including Rydon Lane Retail Park, Tescos, Exeter Chiefs, David Lloyd Gym, Sowton Industrial Estate, Middlemoor Police & Fire Station.

Digby Train Station is close by and serves Exeter City Centre and beyond.

The flat is well presented throughout. Communal entrance hallway with stairs rising to the first floor. Entrance hallway with storage cupboards, doors leading to the spacious lounge with doors to a balcony, modern kitchen with space for appliances. Two double bedrooms and a bathroom with shower over bath.

Unfurnished. Available Mid July. Allocated parking space. EER 'C' Council Tax Band B.

FIRST FLOOR FLAT



While every effort has been made to ensure the accuracy of the floor plan, measurements of rooms, fixtures, fittings and other details are approximate and should be taken as a guide only. The actual layout, fixtures and fittings may vary from the floor plan. The landlord does not warrant the accuracy of the floor plan. The landlord does not warrant the accuracy of the floor plan. The landlord does not warrant the accuracy of the floor plan.

