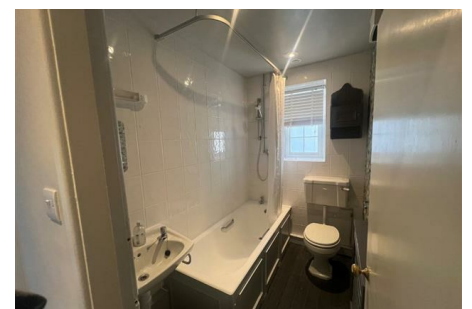


Rounthwaite **R&W** Woodhead

53 MARKET PLACE, MALTON, NORTH YORKSHIRE, YO17 7LX Tel: (01653) 600747

WORSLEY ARMS COTTAGE HIGH STREET, HOVINGHAM, YO62 4LA



- 2 bedroom end terrace stone-built cottage
- Private garden and outbuildings

- Off-street parking
- Open fire and night storage radiators

£900 PER MONTH

Also at: 26 Market Place, Kirkbymoorside Tel: (01751) 430034 & Market Place, Pickering Tel: (01751) 472800

Email: malton@rounthwaite-woodhead.co.uk www.rounthwaite-woodhead.com

Description

Worsley Arms Cottage is a two bedroom end terrace stone-built cottage located in Hovingham. Arranged over two floors the accommodation briefly comprises; Entrance hall with stairs to first floor, Living Room, Kitchen with Pantry, 2 Bedrooms, Bathroom.

Outside there is a private garden and outbuildings along with Off-street parking.

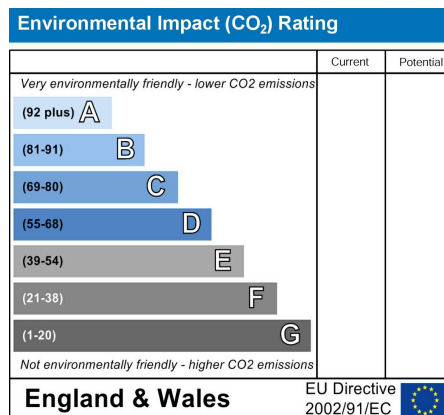
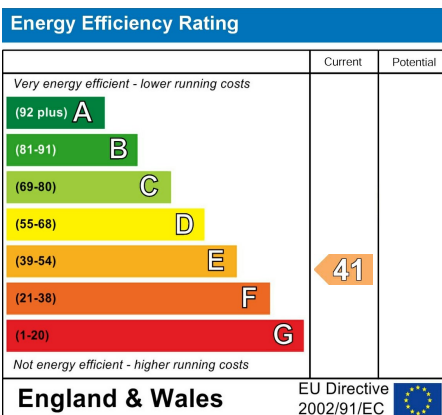
Hovingham lies on the B1257 Malton to Helmsley road, some eight miles from each of these market towns. The village has useful local facilities and amenities including a good village shop, a public house, hotel, restaurant and a very highly regarded bakery. There is a GP surgery in the village, daily buses to Malton and Helmsley and occasional Farmers Markets. Malton to the south east offers many more facilities including varied and interesting shops. The railway provides links to the intercity service at York.

Hovingham lies within the Howardian Hills Area of Outstanding Natural Beauty and is surrounded by lovely countryside and well placed for many recreational pursuits.

General Information



Accommodation





Messrs Rounthwaite & Woodhead for themselves and their vendors and lessors whose agents they are give notice that these particulars are produced in good faith, set out as a general guide only and do not constitute any part of a contract. No person employed by Messrs Rounthwaite & Woodhead has any authority to make or give any representation or warranty whatsoever in relation to this property. The dimensions in the sales particulars are approximate only and the accuracy of any description cannot be guaranteed. Reference to machinery, services and electrical goods does not indicate that they are in good or working order. All reference to prices and rents etc. exclude VAT which may apply in some cases.

Covering Ryedale through offices in Malton, Pickering and Kirkbymoorside

www.rounthwaite-woodhead.com

Rounthwaite **R&W** Woodhead