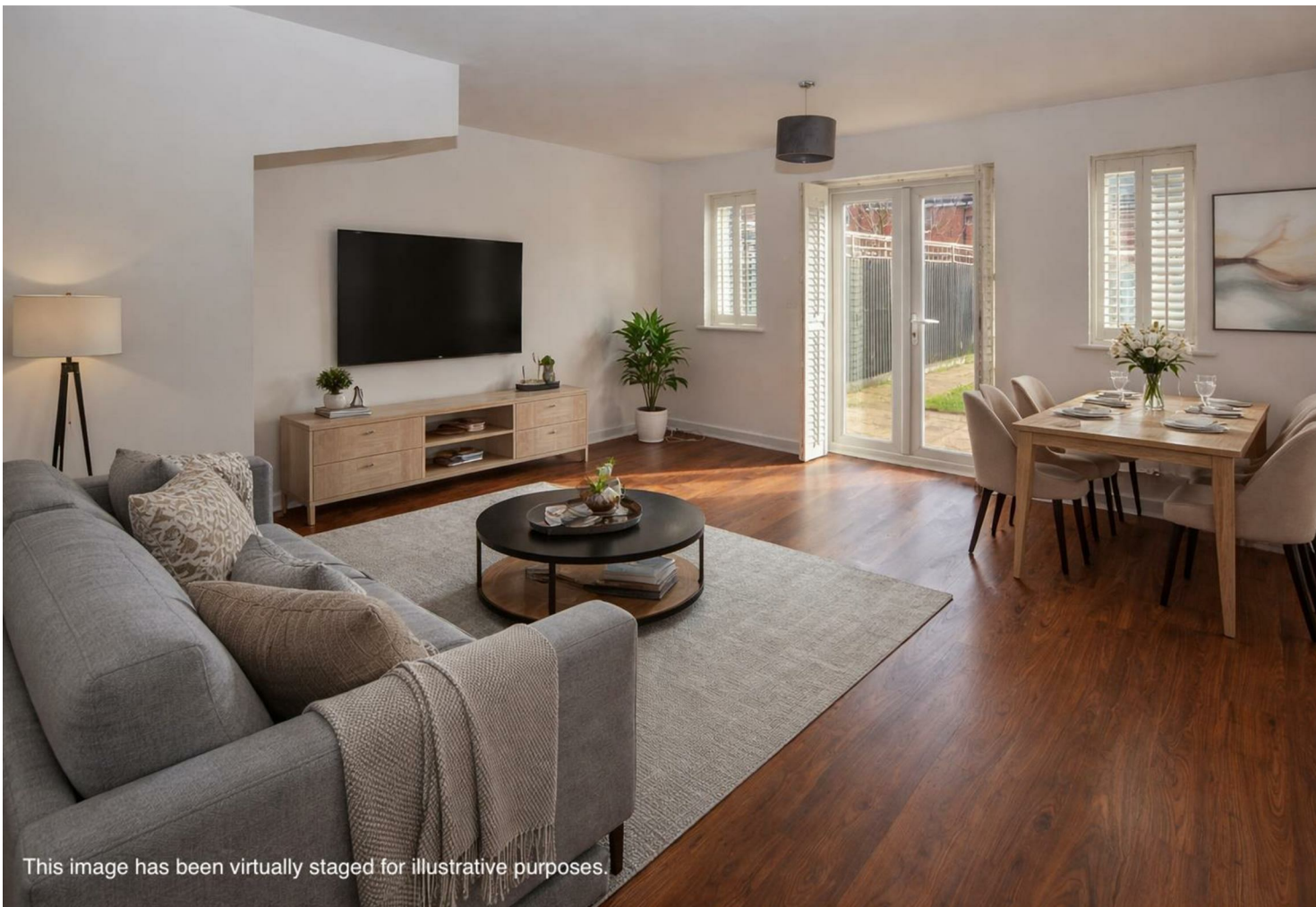




Keith  
Ashton

Little Highwood Way,  
Brentwood



## 34 LITTLE HIGHWOOD WAY

Brentwood, CM14 4RJ

We are delighted to present this well-maintained two-bedroom mid-terrace home, ideally located less than a mile from Brentwood High Street and within easy reach of the mainline station, providing excellent transport links into London and beyond.

Offered with no onward chain, the property is well presented throughout and features two bedrooms, two bathrooms, and the added benefit of two allocated parking spaces.

- VACANT POSSESSION WITH NO ONWARD CHAIN
- TWO ALLOCATED PARKING SPACES
- WELL PRESENTED THROUGHOUT
- TWO DOUBLE BEDROOMS
- TWO BATHROOMS
- SOUTH FACING GARDEN
- 0.9 MILES TO BRENTWOOD HIGH STREET

£400,000 - £450,000



## Description

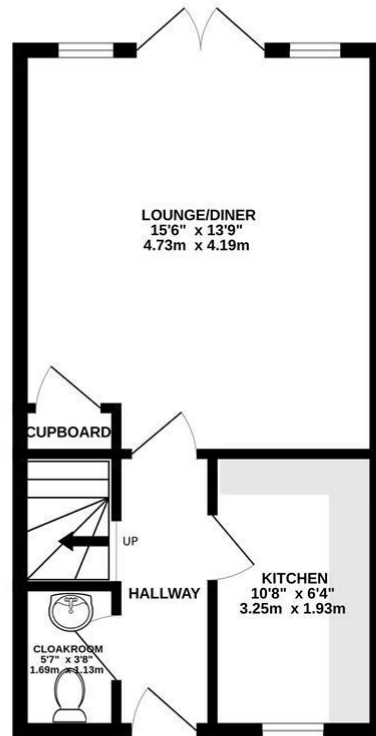
The home opens into a welcoming entrance hall, leading to a well-appointed kitchen fitted with a range of wall and base units, generous worktop space, and a front-facing window. To the rear, a spacious lounge/diner provides an ideal setting for both relaxation and entertaining, with double doors opening onto the garden. A convenient ground floor cloakroom completes the layout.

Upstairs, the landing gives access to two well-proportioned double bedrooms, both featuring fitted wardrobes. The principal bedroom further benefits from a stylish ensuite shower room, while a modern family bathroom serves the remaining accommodation.

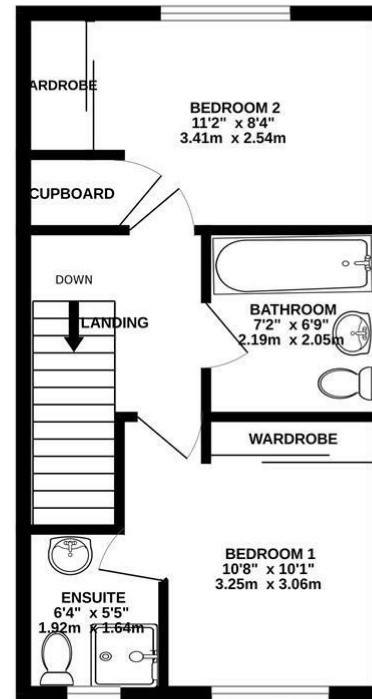
Outside, the south facing rear garden begins with a paved patio area, extending to a neatly maintained lawn. Gated rear access leads to two allocated off-street parking spaces.



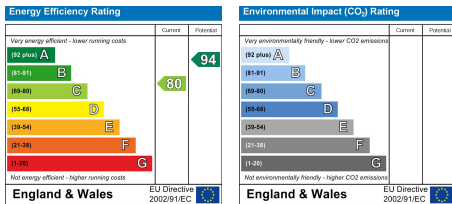
GROUND FLOOR  
360 sq.ft. (33.5 sq.m.) approx.



1ST FLOOR  
360 sq.ft. (33.5 sq.m.) approx.



TOTAL FLOOR AREA : 720 sq.ft. (66.9 sq.m.) approx.  
Measurements are approximate. Not to scale. Illustrative purposes only.  
Made with Metropix ©2025



**SERVICES:**

Local Authority: Brentwood  
Council tax band: D  
Post code: CM14 4RJ

**VIEWING:**

Strictly by prior arrangement with Keith Ashton Estate Agents

**OPENING HOURS:**

Monday to Friday: 8.45AM - 6.30PM | Saturdays: 9AM - 5.30PM | Sundays: 10AM - 2PM

**MORTGAGE INFORMATION:**

We offer the additional facility of an in-house Independent Financial Adviser who will access all mortgage lenders with the purpose of providing you with the benefit of choice. For quotations or comparables please call 01277 260858 or visit our interactive website at [www.mortgagebusiness.net](http://www.mortgagebusiness.net)



We the Agent have not tested any apparatus, fittings or services for this property. The plot size is intended merely as a guide and has not been officially measured or verified by the Agent. Photographs are for illustration only and may depict items which are not for sale or included in the sale of the property. As part of the service we offer we may recommend ancillary services to you which we believe may help you with your property transaction. We wish to make you aware, that should you decide to use these services we will receive a referral fee. For full and detailed information please visit 'terms and conditions' on our website [www.keithashton.co.uk](http://www.keithashton.co.uk)

Brentwood  
Tel. 01277 260858

Village Office  
Tel. 01277 375757

Lettings Office  
Tel. 01277 202200

Explore more @ [www.keithashton.co.uk](http://www.keithashton.co.uk)