

HS HAIR & SON



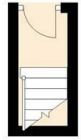
Hamlet Road , Southend-on-Sea SS1 1HJ

- FIRST FLOOR FLAT
- MODERNISATION REQUIRED
- WELL PRESENTED TILED BATHROOM AND WC
- GREAT POTENTIAL
- ONE BEDROOM
- LOFT ROOM
- WALKING DISTANCE TO SOUTHEND CENTRAL STATION AND SOUTHEND CITY CENTRE
- GREAT FOR THOSE LOOKING TO GET ON THE PROPERTY LADDER

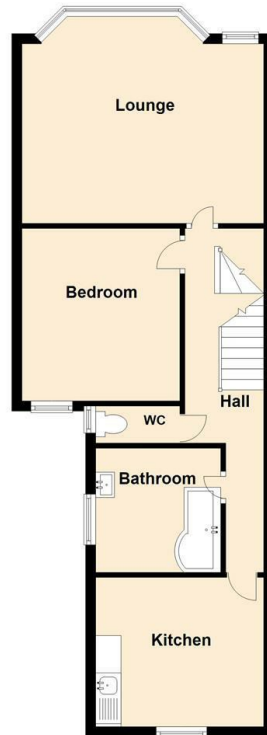
Guide Price £165,000 Leasehold

Local Authority **Southend on Sea Borough Council**
Council Tax Band **A**
EPC Rating **D**

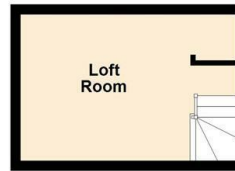
Ground Floor
Approx. 2.2 sq. metres (23.5 sq. feet)



First Floor
Approx. 55.6 sq. metres (598.7 sq. feet)



Second Floor
Approx. 12.3 sq. metres (132.4 sq. feet)



Total area: approx. 70.1 sq. metres (754.5 sq. feet)

Sales Office
190 London Road, Southend-On-Sea,
Essex, SS1 1PJ

Contact
01702 34 11 77
<https://hairandson.co.uk/>

Agents Note: Whilst every care has been taken to prepare these particulars, they are for guidance purposes only. All measurements are approximate and for general guidance purposes only and whilst every care has been taken to ensure accuracy, they should not be relied upon and potential buyers/tenants are advised to recheck the measurements.

