



Rosemead Close, KT6

£800,000

Set within a secure gated development, this modern family home offers four/five double bedrooms (including a study), two bathrooms, ample parking, and EV chargers.

Being close to the A3 without the noise, outstanding schools nearby and a park under half a mile away, Rosemead Close is perfect for the family and the commuter alike.

Features

- Gated Development
- Four/Five Bedrooms
- Two Bathrooms
- South-Facing Garden
- Off-Street Parking
- Great Location



Rosemead Close, KT6

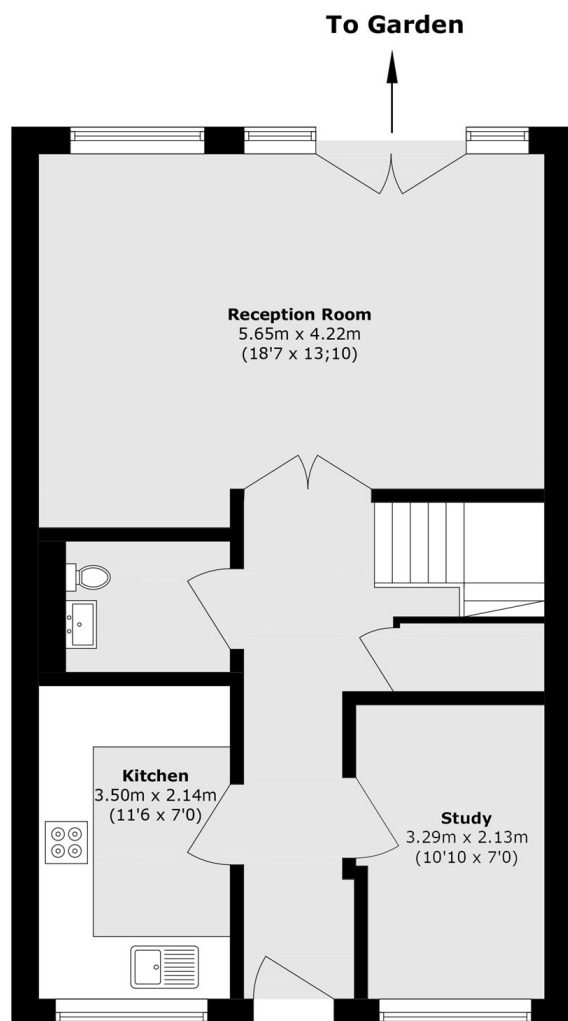
The modern kitchen provides generous storage and flows into a spacious open-plan living and dining area. Upstairs, the master bedroom overlooks the garden and benefits from a contemporary en-suite.

Three further double bedrooms, a family bathroom, and a versatile fifth bedroom/study complete the accommodation. Well presented throughout and set behind secure gates, this elegant home is perfectly suited to modern family living.

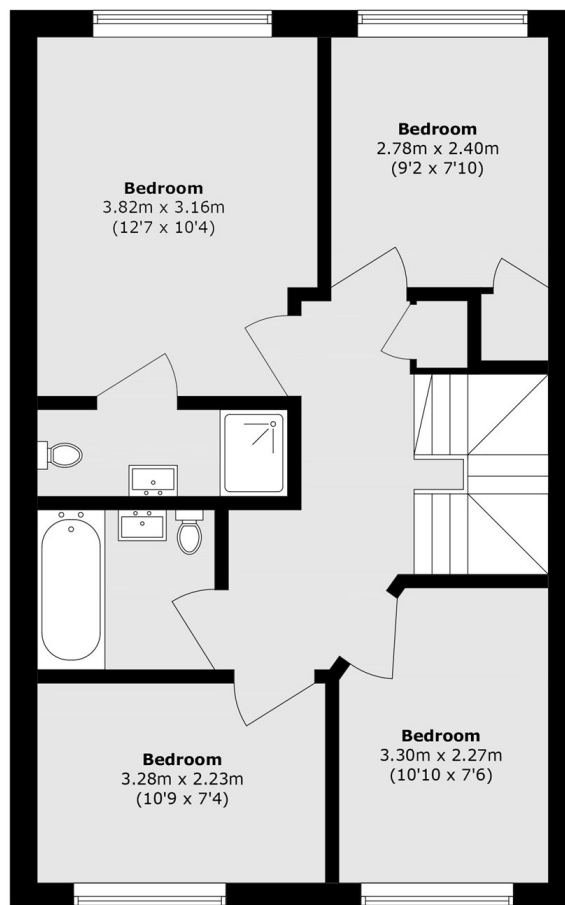
To the front there is an allocated parking space and to the rear is a good size south facing private garden.



Rosemead Close, Surbiton, KT6



Ground Floor



First Floor

Total area (approx.): 106.5 sq. m (1146.8 sq. ft)