



Blandford Mews, Highworth, Swindon, SN6 7BQ

£254,000
(Subject to Contract)

Hanley's

Blandford Mews Highworth Swindon SN6 7BQ

Situated in a quiet location tucked away in the heart of Highworth a short level walk to the High Street, this two bedroom mews property offers well presented accommodation which comprises: To the ground floor is an entrance porch, living room and kitchen/dining room. To the first floor is a re-fitted shower room and two bedrooms; one with a built-in wardrobe and airing cupboard. Outside to the front is an attractive garden with a selection of shrubs, mainly laid to gravel with paved pathway. To the front is a pathway leading to the allocated parking space. The property benefits from electric ceiling and panel heaters and underfloor heating to the ground floor.



1 Shower Room



2 Bedrooms



1 Reception

EPC: TBA

Council Tax Band: C

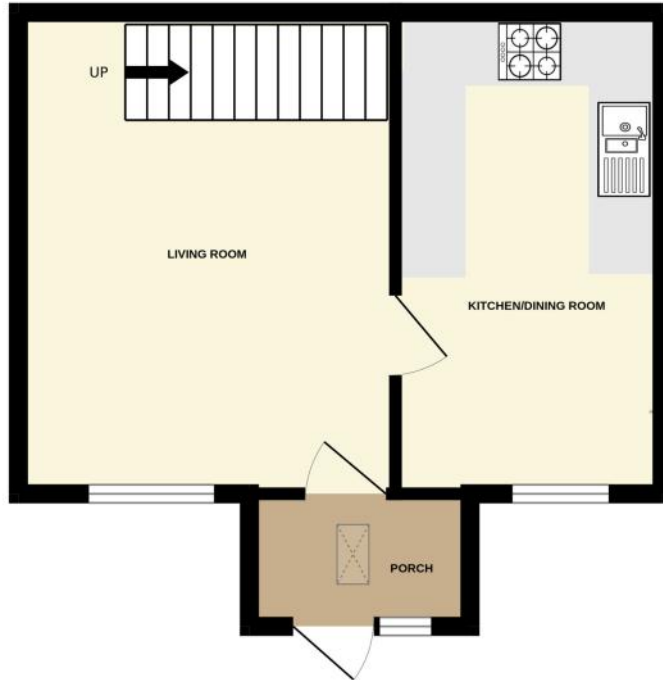
Tenure: Freehold



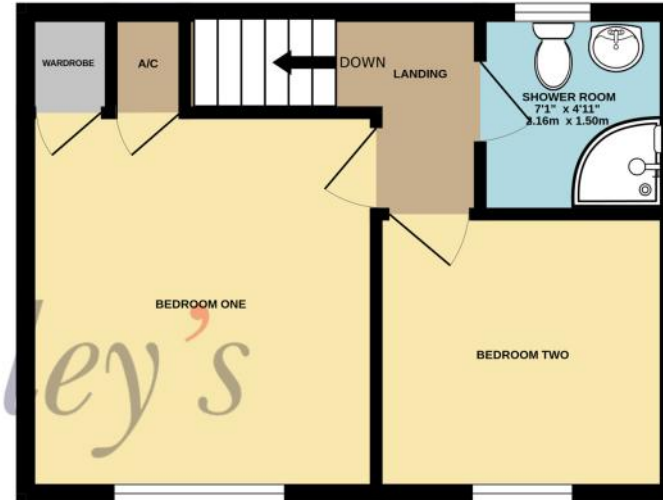
DISCLAIMER. These particulars, whilst believed to be accurate are set out as a general outline for guidance and do not constitute any part of an offer or contract. Intending purchasers should not rely on them as statements or representation of fact, but must satisfy themselves by inspection or otherwise as to their accuracy. No person in this firm's employment has the authority to make or give any representation or warranty in respect of the property. Floor plan measurements and distances are approximate only. We have not carried out a detailed survey nor tested the services, appliances or specific fittings. Your home is at risk if you do not keep up repayments on a mortgage or other loan secured on it.



GROUND FLOOR
323 sq.ft. (30.0 sq.m.) approx.



1ST FLOOR
295 sq.ft. (27.5 sq.m.) approx.



TOTAL FLOOR AREA : 619 sq.ft. (57.5 sq.m.) approx.

