

est 1979

Jeremy
Leaf & Co.



Bute Mews, Hampstead Garden Suburb, NW11

£3,900 Per Month

- 2 - 3 bedrooms
- Parking
- Pet-friendly
- High specification finish
- Recently built
- Two bathrooms
- South facing garden
- Guest WC
- Park views at rear

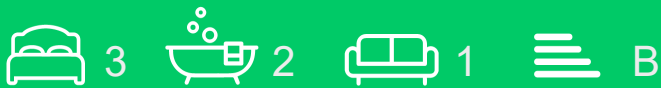
98 High Road, London, N2 9EB
020 8444 5222

eastfinchley@jeremyleaf.co.uk
<https://www.jeremyleaf.co.uk/>

Bute Mews, Hampstead Garden Suburb, NW11 6EQ

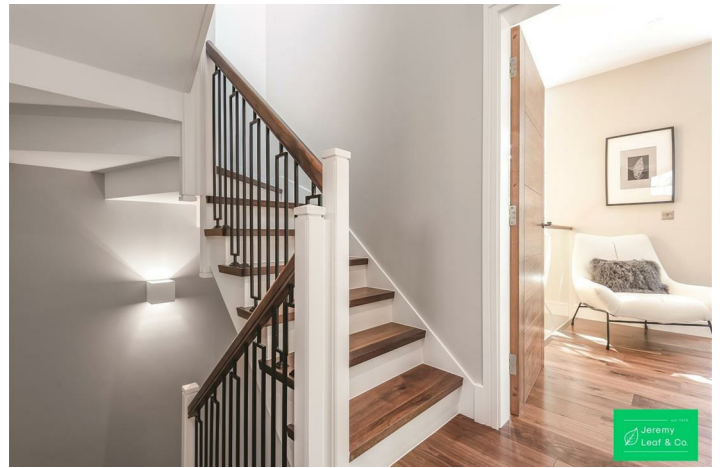
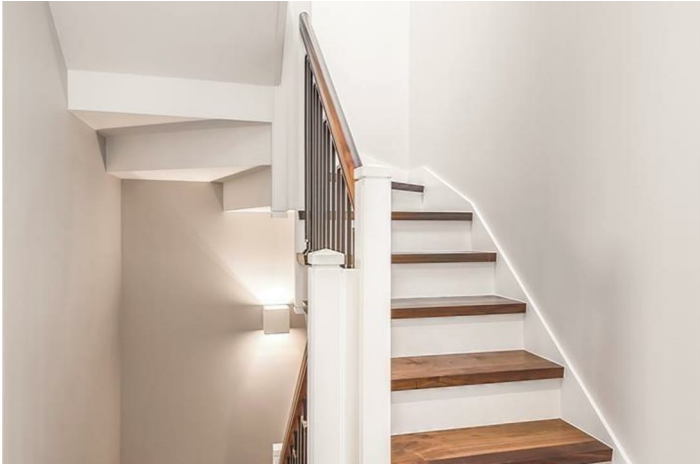
Pet friendly! A rare opportunity to rent an unfurnished, recently built high-spec house, constructed just three years ago and finished to a high specification, in the heart of Hampstead Garden Suburb. The house comprises 1,330 sq. ft. of living accommodation arranged over three floors, offering 2-3 bedrooms, two bathrooms, a reception room overlooking the park, and a fully equipped open-plan kitchen/dining room on the lower ground floor. Additional features include a utility room, a parking space, and a south-facing private garden overlooking the Northway Park open space. EPC rating: B. Council tax band: G.

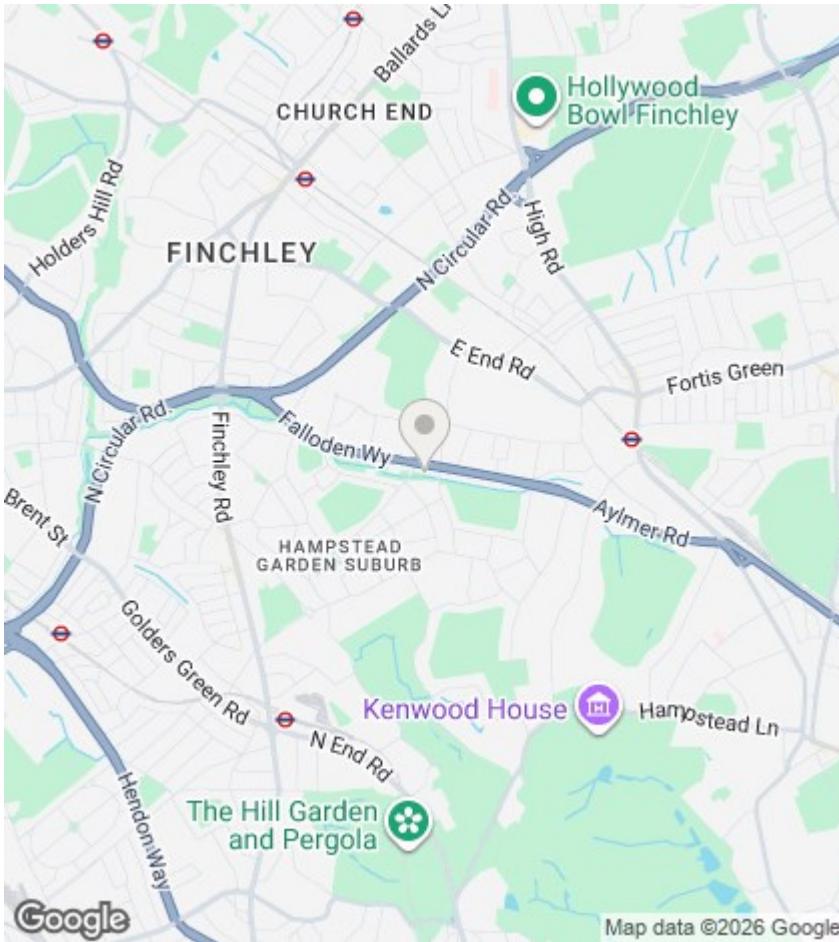
Conveniently located just off Northway, approximately one mile from East Finchley Underground Station, and within close proximity to Market Place shopping facilities. Available now.



Council Tax Band: G







Directions

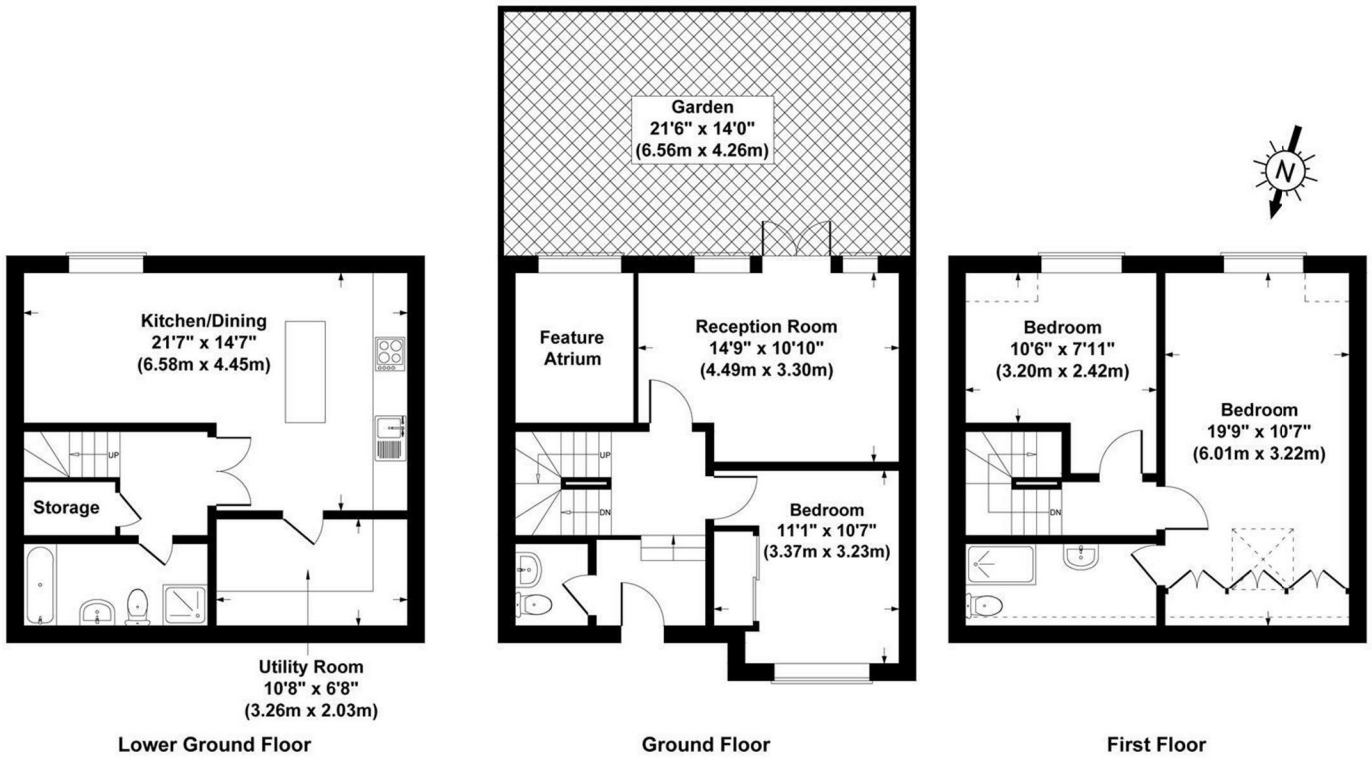
Viewings

Viewings by arrangement only. Call 020 8444 5222 to make an appointment.

EPC Rating:

B

Energy Efficiency Rating		Current	Potential
Very energy efficient - lower running costs			
(92 plus) A			95
(81-91) B		86	
(69-80) C			
(55-68) D			
(39-54) E			
(21-38) F			
(1-20) G			
Not energy efficient - higher running costs			
England & Wales		EU Directive 2002/91/EC	



Bute Mews, Hampstead Garden Suburb, NW11
Gross Internal Area 1330 sq ft /124 sq metres
 Total area not including areas under 1.5 meters
 Not to Scale. Produced by The Plan Portal 2020
For Illustrative Purposes Only.