



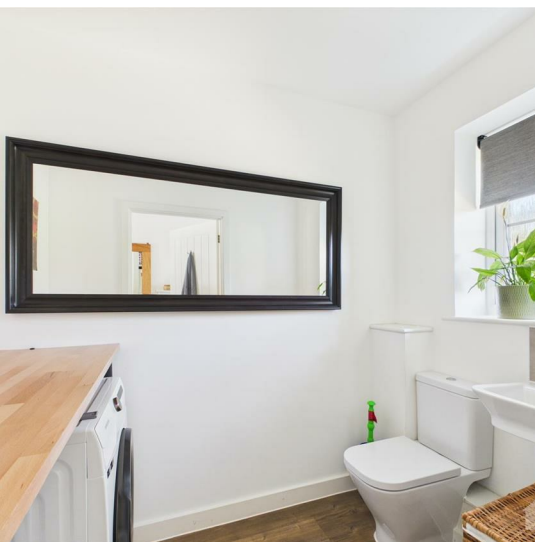
£510,000 GUIDE PRICE

MOORE WALK, BISHOP'S STORTFORD, HERTS, CM23 4RQ



PRESTIGE & VILLAGE

UK's finest properties



An opportunity to purchase this beautifully presented 3 bedroom family home located on the popular St James Place development. This super home is within walking distance of The Bishop's Stortford Boys High School, the town centre and station, The property offers generous accommodation that includes a spacious entrance hall, ground floor cloakroom/utility, large bright lounge with doors to the garden, luxury modern kitchen with integral appliances, three double bedrooms, family bathroom and en-suite shower room. Also benefits from off road parking. Viewing Highly Recommended.





- Modern Family Home
- Three Bedrooms
- En-Suite & Family Bathroom
- Off Road Parking
- Walk To Station
- Overlooks Wooded Area
- Close To Amenities
- Well Presented





### ENTRANCE HALL

11'1 x 4'3 (3.38m x 1.30m)

### CLOAKROOM/UTILITY

7'6 x 4'8 (2.29m x 1.42m)

### LOUNGE

16'8 x 15'7 (5.08m x 4.75m)

### KITCHEN

11'3 x 6'1 (3.43m x 1.85m)

### MASTER BEDROOM

12'8 x 11'9 (3.86m x 3.58m)

### EN-SUITE

8'4 x 11'3 (2.54m x 3.43m)

### BEDROOM TWO

15'6 x 8'7 (4.72m x 2.62m)

### BEDROOM THREE

11'6 x 8'7 (3.51m x 2.62m)

### FAMILY BATHROOM

7'2 x 5'7 (2.18m x 1.70m)

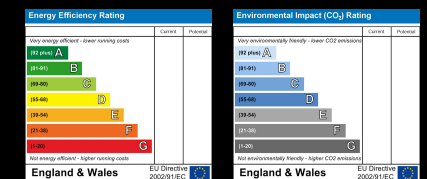




Located on the popular development of St James Way to the South of the Town Centre, close to The Boys High School and a short walk from the lake and 50 acre country park.

Band

These particulars, whilst believed to be accurate are set out as a general outline only for guidance and do not constitute any part of an offer or contract. Intending purchasers should not rely on them as statements of representation of fact, but must satisfy themselves by inspection or otherwise as to their accuracy. No person in this firm's employment has the authority to make or give any representation or warranty in respect of the property.





**PRESTIGE & VILLAGE**

UK's finest properties

[PROPERTY@PRESTIGEANDVILLAGE.CO.UK](mailto:PROPERTY@PRESTIGEANDVILLAGE.CO.UK)

[WWW.PRESTIGEANDVILLAGE.CO.UK](http://WWW.PRESTIGEANDVILLAGE.CO.UK)

