



Flora Dene Lakeside, Bakewell, DE45 1GN



# Flora Dene Lakeside

Guide Price

## £425,000

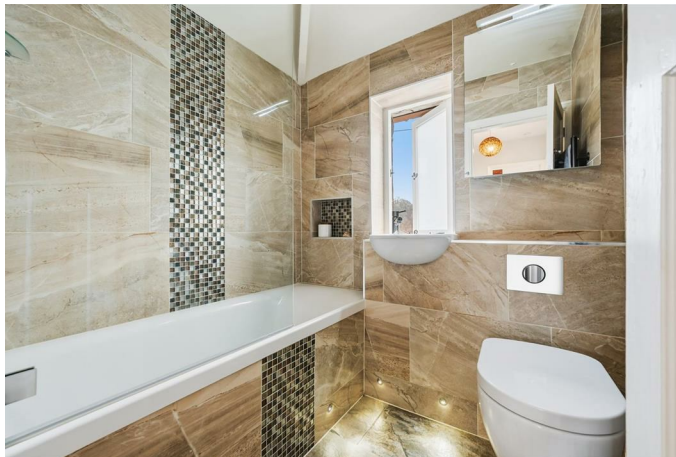
£425,000 - £450,000 Guide Price

This beautifully presented three-bedroom semi-detached home has been skillfully renovated by the present owner to create light, airy and elegantly finished accommodation, where every detail has been carefully considered. Set in a peaceful residential location on the edge of Bakewell, the property enjoys the rare combination of off-road parking, an attractive garden adjoining open countryside and the added benefit of a detached home office studio, all within easy reach of excellent shops, amenities and highly regarded schools, as well as convenient access to major commercial centres.

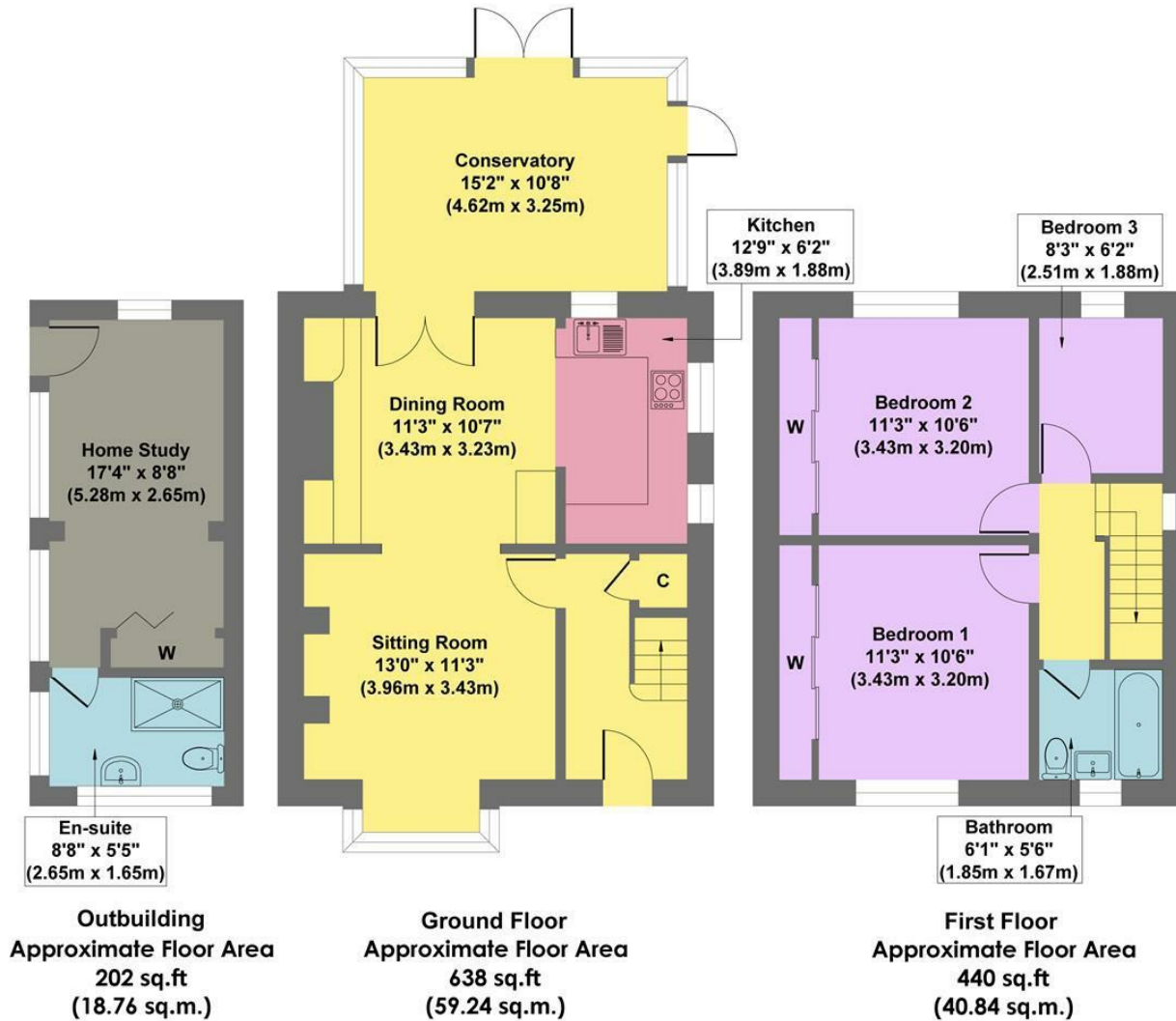


- Far Reaching Countryside Views
- Off Road Parking
- Close To Excellent Amenities
- Within Highly Regarded School Catchment
- Skillfully Renovated & Beautifully Presented
- Light & Airy Accommodation Completed With An Eye For Detail
- Separate Home Office/Studio
- Attractive Rear Garden
- EPC: TBC
- Viewings: Bakewell Office





# Flora Dene



**Approx. Gross Internal Floor Area 1280 sq.ft / 118.84 sq.m**

Illustration for identification purposes only. Measurements are approximate, not to scale

While we endeavour to make our sales particulars fair, accurate and reliable, they are only a general guide to the property and, accordingly, if there is any point, which is of particular importance to you, please contact the relevant office. The Agents have not tested any apparatus, equipment, fittings or services and so cannot verify they are in working order. The buyer is advised to obtain verification. Please note all the measurement details are approximate and should not be relied upon as exact. All plans, floor plans and maps are for guidance purposes only and are not to scale. Under no circumstances should they be relied upon as exact or for use in planning carpets and other such fixtures, fittings or furnishings. YOUR HOME IS AT RISK IF YOU DO NOT KEEP UP REPAYMENTS ON A MORTGAGE OR OTHER LOAN SECURED ON IT. 'A Life Assurance policy may be requested.' 'Written Quotations of credit terms available on request.'

Banner Cross  
T: 0114 268 3241  
E: [bannercross@saxtonmee.co.uk](mailto:bannercross@saxtonmee.co.uk)  
[www.saxtonmee.co.uk](http://www.saxtonmee.co.uk)

Hathersage  
T: 01433 650009  
E: [hathersage@saxtonmee.co.uk](mailto:hathersage@saxtonmee.co.uk)

Bakewell  
T: 01629 815307  
E: [bakewell@saxtonmee.co.uk](mailto:bakewell@saxtonmee.co.uk)

Matlock  
T: 01629 828250  
E: [matlock@saxtonmee.co.uk](mailto:matlock@saxtonmee.co.uk)

