






11 North Star Court, King's Lynn PE30 2NF

£174,995

 2  1  1



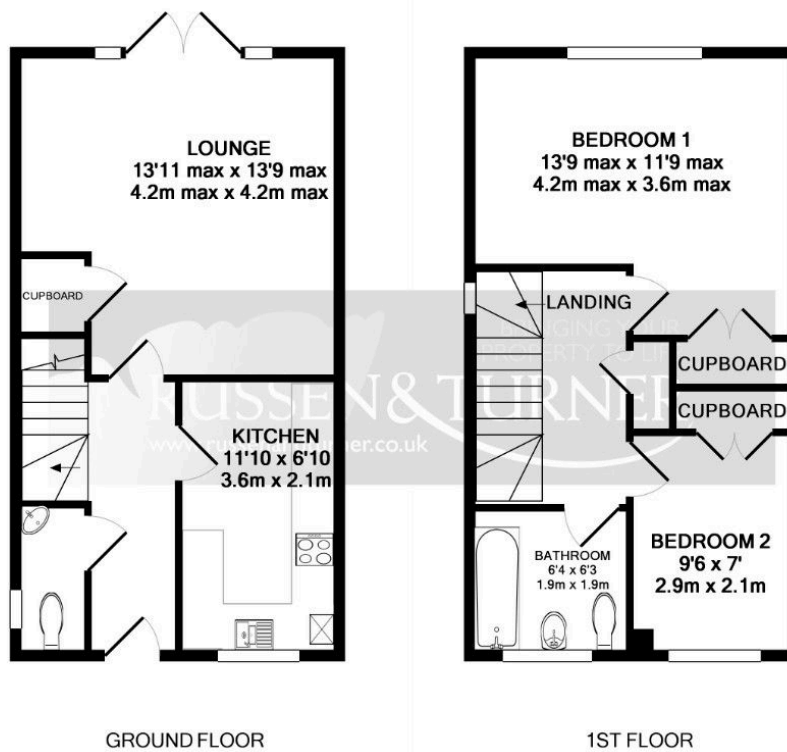
NO ONWARD CHAIN! Perfect for first-time buyers or investors, this stylish two-bedroom semi-detached home is ready to move straight into. Thoughtfully designed for modern living, it offers a welcoming lounge and dining space, a sleek fitted kitchen, and the convenience of a ground floor W.C. Upstairs, both bedrooms include built-in wardrobes, and the bathroom features a crisp white suite with shower over bath. Outside, enjoy a private rear garden with artificial lawn, handy shed, and side access, plus allocated parking to the rear. With its low-maintenance finish, modern feel, and great location, this turn-key home is a superb opportunity, call Russen & Turner today to arrange your viewing!





Key Features

- Semi-detached house
- 2 Bedrooms
- Allocated parking
- Council band A
- No onward chain
- Ready to move-in
- Ground floor W.C.
- Ideal 1st time buy
- Garden
- Beautifully presented



Whilst every attempt has been made to ensure the accuracy of the floor plan contained here, measurements of doors, windows, rooms and any other items are approximate and no responsibility is taken for any error, omission, or mis-statement. This plan is for illustrative purposes only and should be used as such by any prospective purchaser. The services, systems and appliances shown have not been tested and no guarantee as to their operability or efficiency can be given
Made with Metropix ©2015

