



Mobberley
Town Lane


IRLAM
of Knutsford



Mobberley, WA16 7HJ

Town Lane

£795,000



The Property

This beautifully presented four-bedroom semi-detached Victorian property, formerly the Mobberley village store, has been much extended, refurbished and remodelled over the years by the current owners to now provide light, flexible and deceptively spacious living accommodation, blending character features and modern convenience effortlessly. Particular mention must be made for the stunning, open plan, Living Dining Kitchen with island unit, bi fold doors and atrium roof light, the master bedroom with en-suite shower room, refitted family bathroom and added utility as well as the generous reception proportions and character features throughout the property.

Located in the heart of the village, a stone's throw from most local amenities and walking distance to the Bulls Head and Roebuck public houses whilst being ideally positioned for all major network links to the Northwest and beyond.

The property is approached over a block paved driveway, providing ample off-road parking, leading to the front entrance and integral

garage with feature planting, screened by mature hedging. The rear gardens are a lovely feature of the property, being generous in proportions with a private, open aspect. Laid to lawn in the main with a range of well stocked borders containing a wealth of different plants, mature trees, pergola and greenhouse, all fully enclosed by brick elevations and timber fencing. Stone flagged patio area sweeps around the rear of the property providing ample opportunity for alfresco dining and enjoying the pleasant aspect.

Directions

From the centre of Knutsford proceed along King Edward Road (A50) passing the shell petrol station on the left. At the traffic lights turn left onto Adams Hill passing the railway station. At the traffic lights turn left onto Hollow Lane which becomes Mobberley Road. Continue passing Bentley Manchester through the traffic lights into Mobberley village where the property will soon be seen on your left opposite Town Lane Co-op.

- Beautifully presented semi-detached property situated in the heart of Mobberley village
- Very spacious & flexible living accommodation situated over four floors
- Fabulous open plan Living, dining kitchen with integrated appliances & separate utility room
- Four generous bedrooms
- Three bathrooms (one en-suite)
- Generous, private, enclosed garden
- More than ample off road parking
- Garage

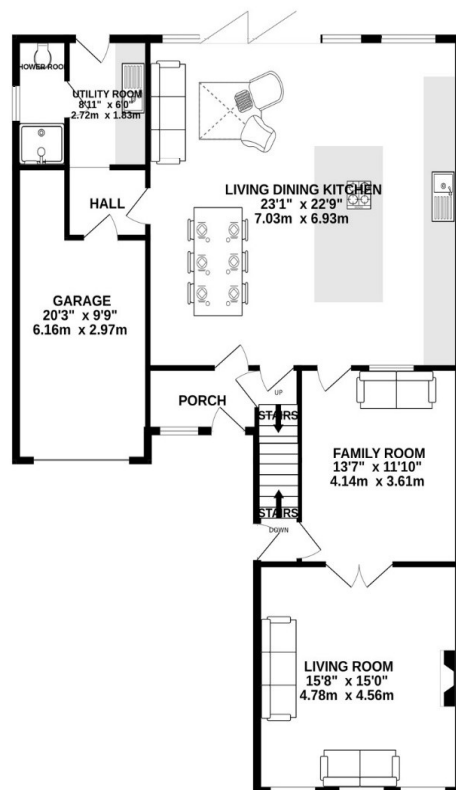
Postcode – WA16 7HJ
Tenure – Freehold
Local Authority – Cheshire East
Council Tax – Band B
EPC - TBC



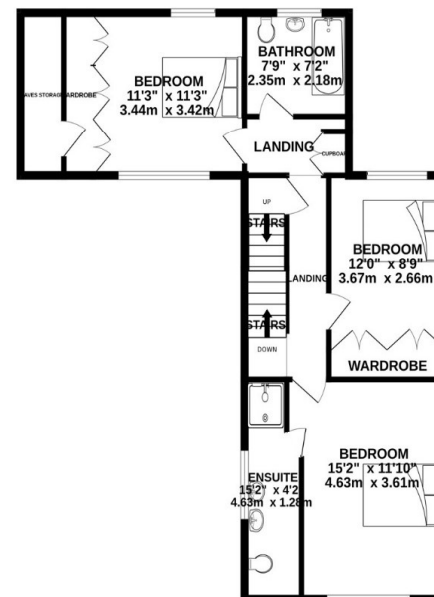
BASEMENT
543 sq.ft. (50.4 sq.m.) approx.



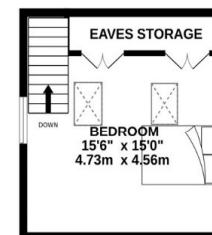
GROUND FLOOR
1278 sq.ft. (118.7 sq.m.) approx.



1ST FLOOR
712 sq.ft. (66.2 sq.m.) approx.



2ND FLOOR
232 sq.ft. (21.6 sq.m.) approx.



TOTAL FLOOR AREA : 2765 sq.ft. (256.9 sq.m.) approx.

Whilst every attempt has been made to ensure the accuracy of the floorplan contained here, measurements of doors, windows, rooms and any other items are approximate and no responsibility is taken for any error, omission or mis-statement. This plan is for illustrative purposes only and should be used as such by any prospective purchaser. The services, systems and appliances shown have not been tested and no guarantee as to their operability or efficiency can be given.

Made with Metropix ©2026

103 King Street, Knutsford, Cheshire, WA16 6EQ

01565 654 000

E: info@irlamsestateagents.co.uk

www.irlamsestateagents.co.uk

I1021_ Printed by Ravensworth 01670 713330

Irlams (Estate Agents) Ltd for themselves and for the vendors or lessors of this property whose agents they are give notice that:

- The particulars are set out as a general outline only for the guidance of intending purchasers or lessees, and do not constitute, nor constitute part of, an offer or contract;
- All descriptions, dimensions, references to condition and necessary permissions for use and occupation, and other details are given in good faith and are believed to be correct but any intending purchasers or lessees should not rely on them as statements or representations of fact, but must satisfy themselves by inspection or otherwise as to the correctness of each of them;
- No person in the employment of Irlams (Estate Agents) Ltd has any authority to make or give any representation or warranty whatsoever in relation to this property.
- We believe the information above to be accurate at the point it was obtained however you may wish to make a final check with your Solicitor or with us in respect of anything above you feel crucial before you proceed with the purchase of this property.

