

The Drive

Ickenham • Middlesex • UB10 8AQ
Guide Price: £700,000



coopers
est 1986

The Drive

Ickenham • Middlesex • UB10 8AQ

A charming three-bedroom terraced home, this Edwardian cottage is ideally located on the highly sought-after The Drive in Ickenham. Rich in character, the property features period details including high ceilings, and original fireplaces, blended with well-proportioned living spaces suited to modern living. The accommodation includes a welcoming reception room, fitted kitchen, three bedrooms, and a family bathroom. To the rear, a private garden provides a peaceful outdoor retreat. Conveniently positioned close to local amenities, reputable schools, and excellent transport links, this delightful home offers both character and convenience in a prime location.

Three bedrooms

Grade II listed building

Edwardian cottage

Private garden

Fitted kitchen

Downstairs WC

Spacious interior

Close to sought after schools

Off street parking

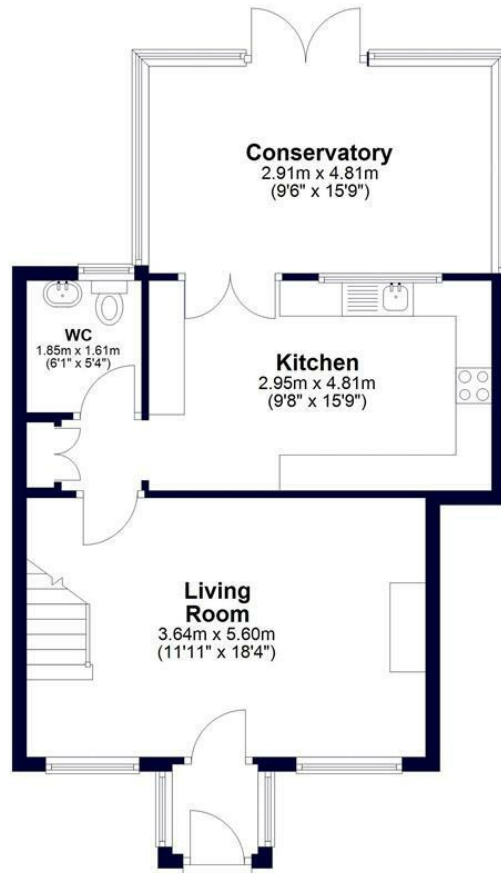
Easy access to A40/M25

These particulars are intended as a guide and must not be relied upon as statements of fact. Your attention is drawn to the Important Notice on the last page.





Ground Floor
Approx. 56.3 sq. metres (605.8 sq. feet)



First Floor
Approx. 40.2 sq. metres (433.2 sq. feet)



Total area: approx. 96.5 sq. metres (1039.0 sq. feet)

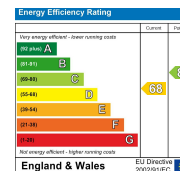


Whilst every effort has been made to ensure the accuracy of this floor plan, measurements of doors, windows, rooms and other items are approximate and no responsibility is taken for any errors. This plan is for illustrative purposes only and should be used as such by any prospective purchaser.
©Property Pot. Produced on behalf of Coopers Residential.



**27-29 Swakeleys Road, Ickenham,
Middlesex, UB10 8DF**
ickenham@coopersresidential.co.uk

CoopersResidential.co.uk



Important Notice: These particulars, whilst believed to be accurate are set out as a general outline only for guidance and do not constitute any part of an offer or contract. Intending purchasers should not rely on them as statements or representation of fact, but must satisfy themselves by inspection or otherwise has the authority to make or give any representation or warranty in respect of the property.