



Tithebarn Road | Rugeley | WS15 2QW

Offers In The Region Of £380,000



Summary

**** NO CHAIN ** SOUGHT AFTER LOCATION ** CLOSE TO TOWN CENTRE ** THREE BEDROOMS ** TWO RECEPTION ROOMS ** CONSERVATORY ** KITCHEN ** GOOD SIZE PLOT ** DECEPTIVELY SPACIOUS THROUGHOUT ** VIEWING ESSENTIAL ****

WEBBS ESTATE AGENTS are pleased to market this deceptively spacious, three bedroom detached bungalow, located in a sought after area of Rugeley on Tithebarn Road. Viewing of the property is essential to fully appreciate the size and space on offer. The property is located close to amenities, useful transport links, schools and a short distance to Rugeley Town Centre. The internal accommodation briefly comprises, entrance hallway, living room, dining room, kitchen, conservatory, three bedrooms and a wet room. The property also benefits from a good size plot and an extended garage.

Key Features

- NO CHAIN
- CLOSE TO TOWN CENTRE
- TWO RECEPTION ROOMS
- KITCHEN
- DECEPTIVELY SPACIOUS THROUGHOUT
- SOUGHT AFTER LOCATION
- THREE BEDROOMS
- CONSERVATORY
- GOOD SIZE PLOT
- VIEWING ESSENTIAL

Rooms and Dimensions

Hallway

Living Room

17'1 x 10'2 (5.21m x 3.10m)

Dining Room

17'1 x 10'2 (5.21m x 3.10m)

Kitchen

17'7 x 9'2 (5.36m x 2.79m)

Conservatory

9'7 x 8'11 (2.92m x 2.72m)

Bedroom 1

13'6 x 10'9 (4.11m x 3.28m)

Bedroom 2

11'2 x 10'8 (3.40m x 3.25m)

Bedroom 3

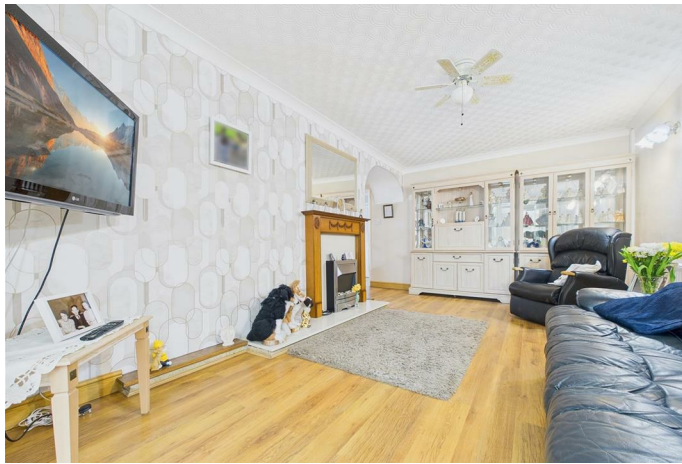
9'3 x 8'7 (2.82m x 2.62m)

Wetroom

8'3 x 5'5 (2.51m x 1.65m)

IDENTIFICATION CHECKS (R)







Webbs Estate Agents - endeavour to maintain accurate depictions of properties in Virtual Tours, Floor Plans and descriptions, however, these are intended only as a guide and purchasers must satisfy themselves by personal inspection.

