



31 Draycott Avenue | | LONDON | SW3 3BS

£2,838 Per month

**ESON2**  
REAL ESTATE

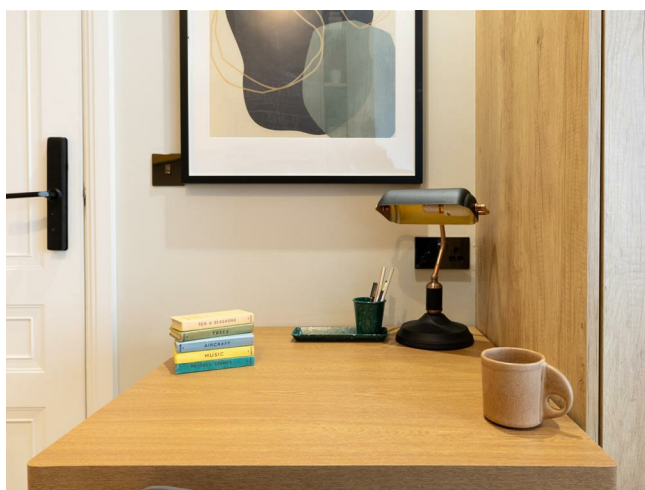
## Key features

- Open-Plan Living
- High-End Kitchen
- Smart Design
- On-site Gym
- Workspace Facilities

## Description

This newly renovated Chelsea studio offers modern interiors, a study room, premium appliances, and a luxury bathroom. With built-in storage and excellent transport links, it's a perfect choice for those seeking upscale living near King's Road.

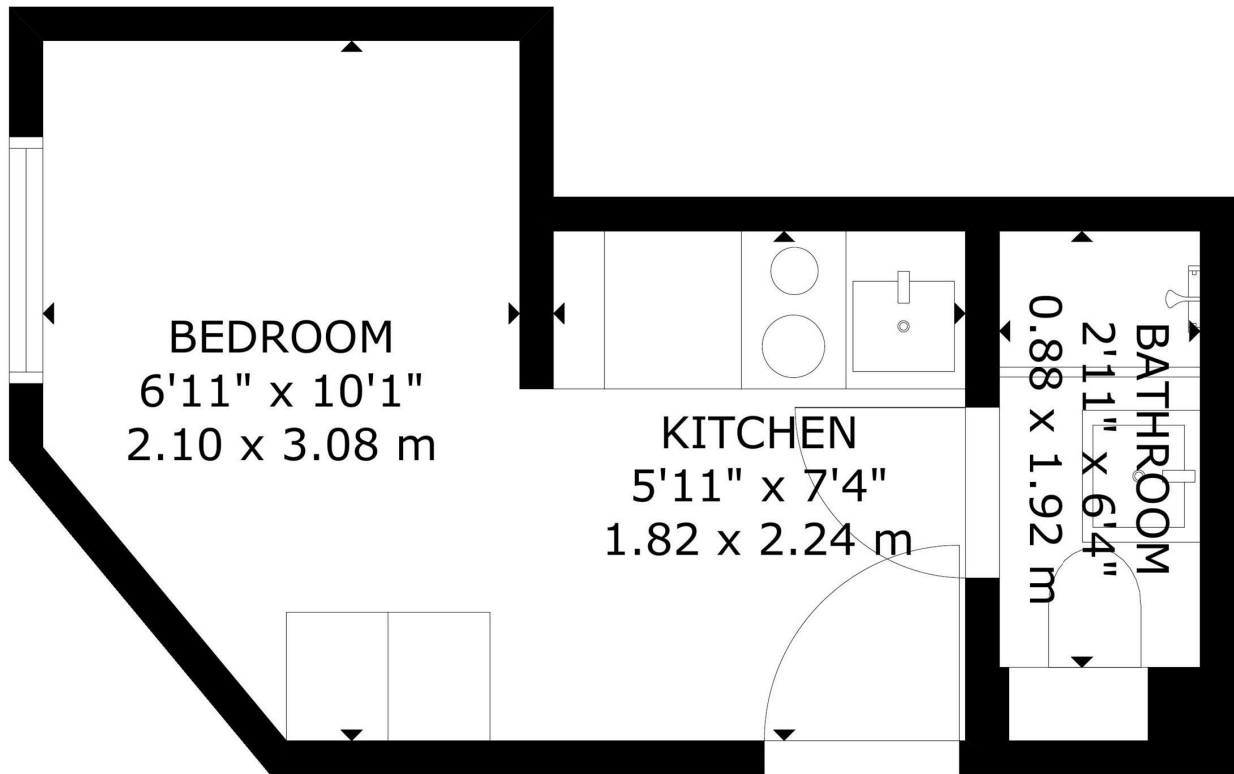
## Directions



This newly renovated studio apartment, located in Chelsea, offers a sleek and functional living space with modern interiors and an open-plan layout that maximizes both space and natural light, creating a stylish and welcoming atmosphere.

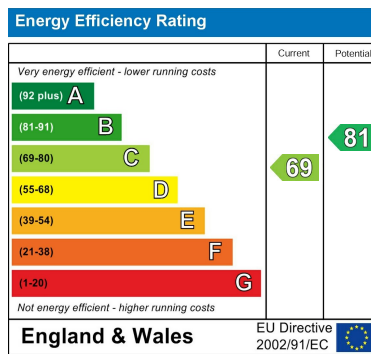


Floor plans



GROSS INTERNAL AREA  
 TOTAL: 13 m<sup>2</sup>/135 sq.ft  
 SECOND FLOOR: 13 m<sup>2</sup>/135 sq.ft  
 SIZE AND DIMENSIONS ARE APPROXIMATE, ACTUAL MAY VARY

SECOND FLOOR



Council Tax Band    EPC Rating C



301 Michelin House 81 Fulham road  
 London  
 Greater London  
 SW3 6RD  
 07920 257649  
 fayeel@eson2.co.uk  
 www.eson2.co.uk