



Downs Road, E5

£500,000

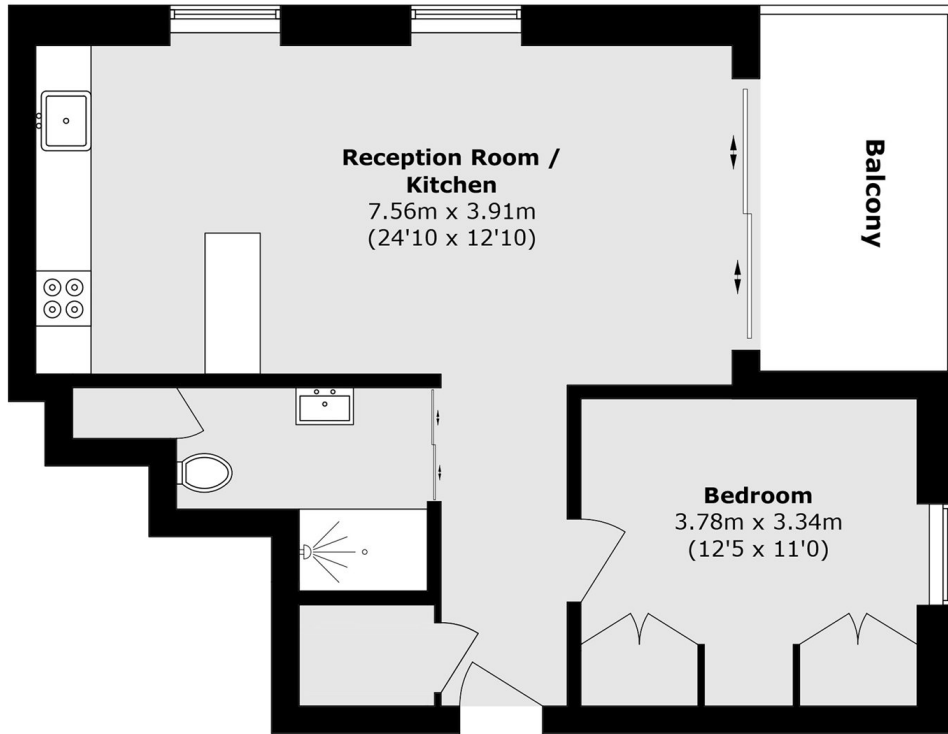
An immaculate one-bedroom flat in the RIBA award-winning Otto Building. The property features a bright, open-plan living and dining space, alongside a kitchen upgraded with premium Lusso Stone tapware, Tala lighting pendants, and a quartz stonetop breakfast bar. Floor-to-ceiling sliding glass doors open out to a private terrace boasting far-reaching views. Residents enjoy premium amenities including a concierge, fitness room, communal roof garden, and secure bike storage.

The Otto Building is ideally located directly on Hackney Downs Park, offering immediate access to open green space and outdoor recreation, including tennis courts. Hackney Downs, Hackney Central, Clapton and Rectory Road Overground stations are all within half a mile, providing fantastic transport links across London. The vibrant shops, cafés, and restaurants of Kingsland Road, Mare Street, and Chatsworth Road are all within easy walking distance.

Features

- One Double Bedroom
- Private Balcony
- Far Reaching Views
- Fitness Room
- Award-Winning Parkside Development

Downs Road, London, E5



Total area (approx.): 54.9 sq. m (590.9 sq. ft)

Balcony area (approx.): 7.4 sq. m (79.6 sq. ft)