



**hamlyn
smith.**

Robert Street, Brighton, BN1 4AY

£400,000 - £425,000

hamlyn smith.

 2 Bedrooms

 1 Reception

 2 Bathrooms

Guide price £400,000 - £425,000.
A beautiful, modern and stylish two
bedroom apartment in the heart of
the North Laines in Brighton.

- Two Bedroom Apartment
- First Floor
- Modern Finish
- Lift Access
- Energy Rating - C
- Council Tax Band - D
- Walking Distance To Brighton Station
- Communal Bike Storage Facility
- No Onward Chain





hamlyn smith.

📍 50 Goldstone Villas, Hove, BN3 3RS

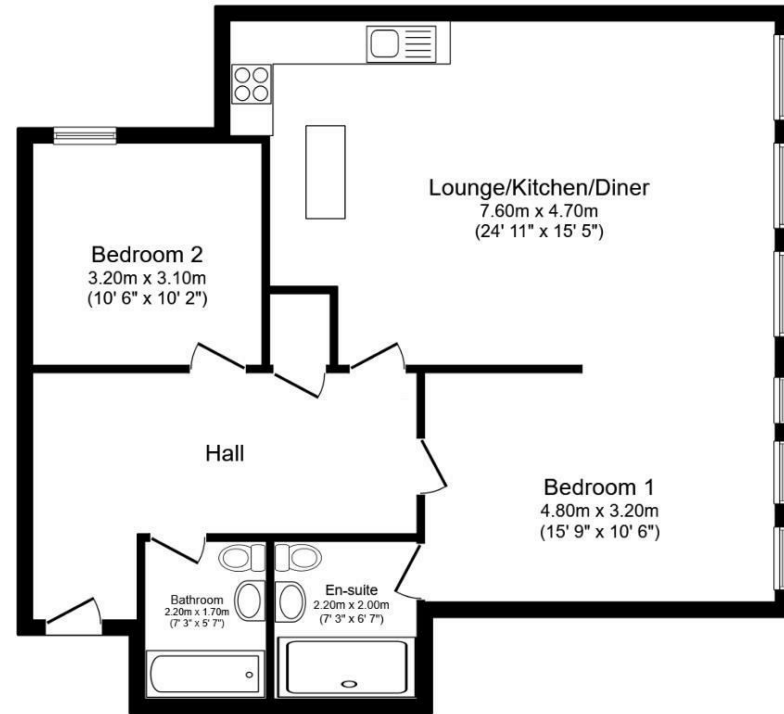
☎ 01273 762222

✉ hello@hamlynsmith.co.uk

Located on the first floor, this two bedroom property is perfect for sharers, couples or individuals. As you enter the property, you are immediately struck by the design and modern feel that this property has to offer. The second bedroom is the first room in the hallway to your left and is a good size double bedroom, with new carpet, neutral décor and plenty of space for a double bed and additional storage. The main bathroom is opposite this bedroom and summarises everything this property is about. With a sleek design, tiled throughout, minimalistic feel with bath and shower hose, large mirror on the wall above the bath and a second mirror with storage shelf above the sink, it is a perfect blend of practicality and modern living.

The master bedroom is located at the front of the property and is a very unique and spacious room with a separate en-suite bathroom. The room itself is a very generous size, with wooden flooring, a window spreading across the width of the room flooding the room with light, with venetian blinds to offer privacy at night time. Ample room for additional wardrobe storage and a very unique feature with a large sliding door which opens on the main living room/dining room. The kitchen area includes an island/breakfast bar with storage, free standing fridge freezer, dish washer and washing machine.

This property is located in the contemporary 'Argus Lofts' development and is a truly wonderful apartment. With easy access to central Brighton, Churchill Square, local bus routes and Brighton train station, this is perfect for those wanting to be in the heart of the city. The block offers secure entry phone system, lift access to the first floor and a very convenient communal bike storage facility.



Floor Plan

Floor area 84.7 m² (911 sq.ft.)

TOTAL: 84.7 m² (911 sq.ft.)

This floor plan is for illustrative purposes only. It is not drawn to scale. Any measurements, floor areas (including any total floor area), openings and orientations are approximate. No details are guaranteed, they cannot be relied upon for any purpose and do not form any part of any agreement. No liability is taken for any error, omission or misstatement. A party must rely upon its own inspection(s). Powered by www.Propertybox.io

