



Guide Price
£575,000

Freehold

4x  2x  1x 

**Ascham End,
Walthamstow, E17**



Main features

- Large garden
- Offered chain-free
- Driveway
- Loft room
- Two bathrooms
- Potential to extend (STPP)

Accommodation

GROUND FLOOR

Lounge: 12'2 x 8'11 (3.71m x 2.72m)
 Dining Room: 12'6 x 9'9 (3.81m x 2.97m)
 Kitchen: 20'11 x 10'2 (6.38m x 3.10m)
 Bathroom
 Shower Room

FIRST FLOOR

Bedroom 1: 12'4 x 9'10 (3.76m x 3.00m)
 Bedroom 2: 12'3 x 9'0 (3.74m x 2.75m)
 Bedroom 3: 9'11 x 6'10 (3.02m x 2.08m)
 Bedroom 4: 9'1 x 6'10 (2.77m x 2.08m)

SECOND FLOOR

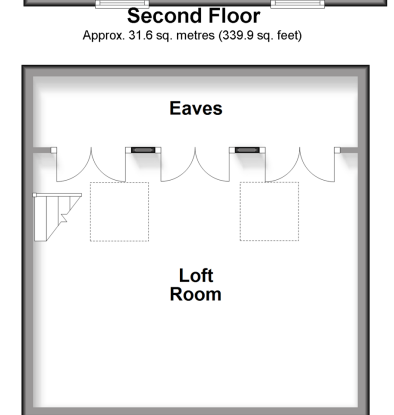
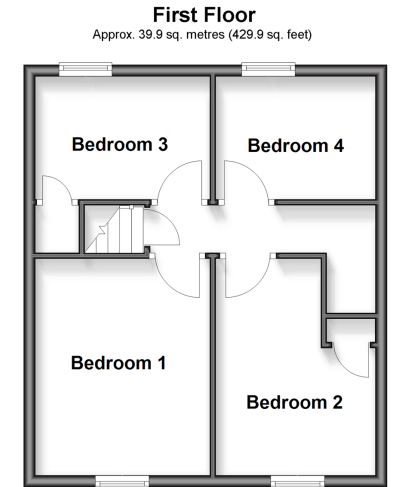
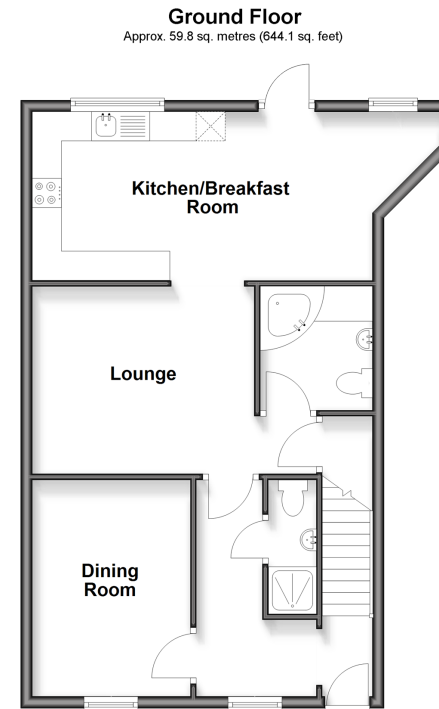
Loft Room: 18'2 x 14'4 (5.54m x 4.37m)

OUTSIDE

Driveway
 Rear Garden

Call Walthamstow - 020 8509 0092 ■ douglasallen.co.uk

- A private rental licensing scheme applies to some properties in this area, please contact us before proceeding
- Legal advice should be taken to verify fixtures/fittings, planning, alterations and/or lease details
- Appliances & services are untested, dimensions are approximate and floor plans are not to scale



53118004/20250906/KS/DM