



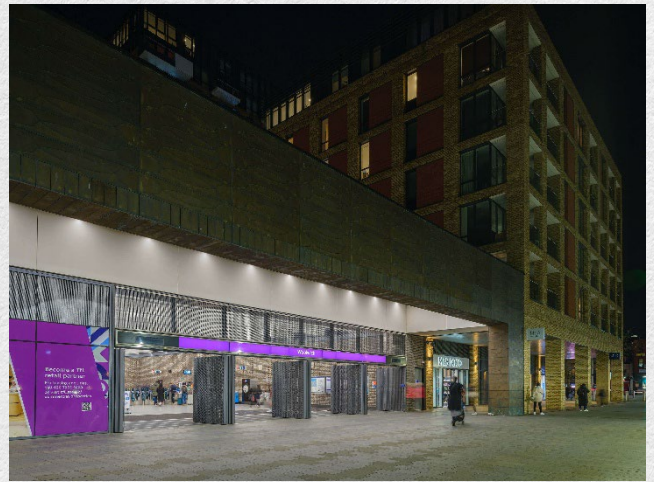
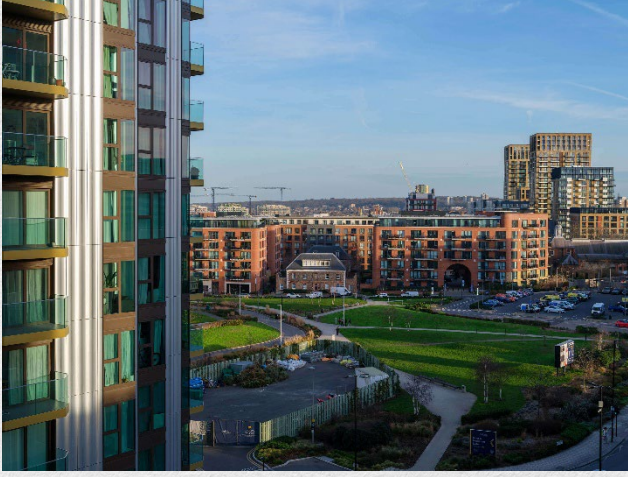
Royal Arsenal Riverside, Lantern Wharf, Woolwich, SE18

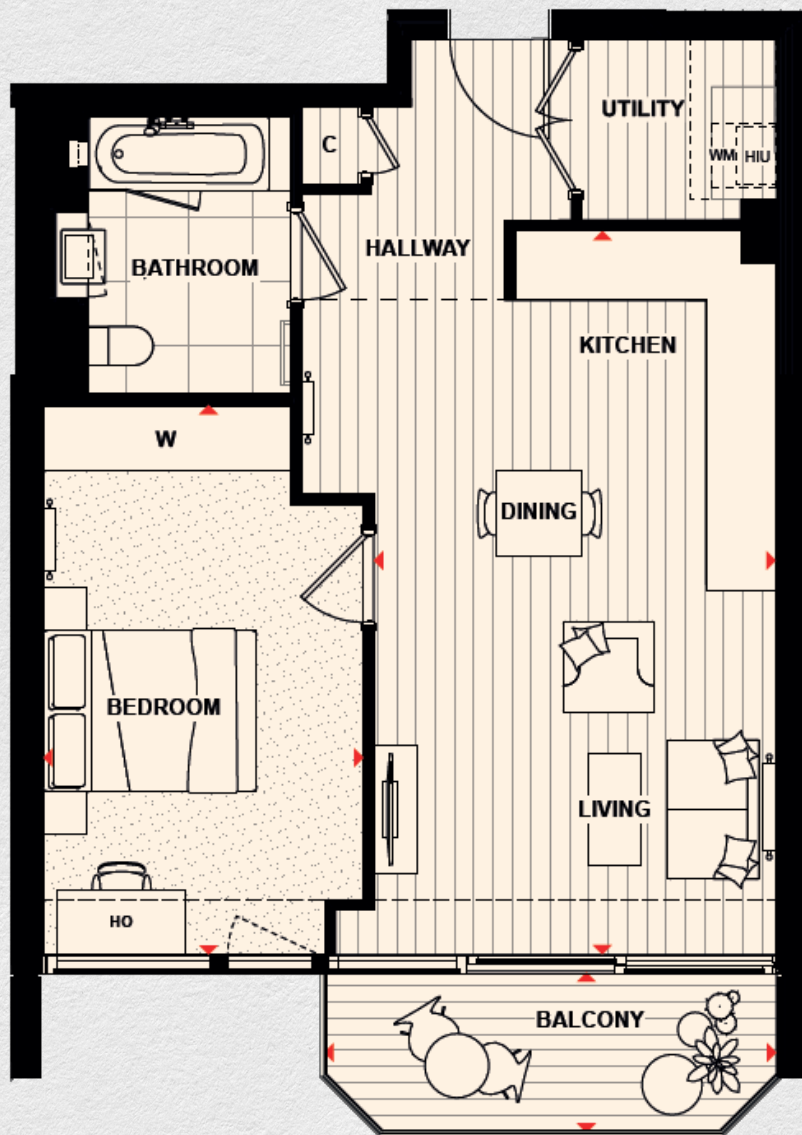
£476,850

- Completion Q1-2027
- Fifth floor apartment
- 1 bedroom
- 1 bathroom
- 609 sq ft
- Open plan living area
- Private balcony
- Premium residents' facilities
- Desirable riverside location
- 999-year lease

This well-presented one-bedroom apartment is located within Lantern Wharf, forming part of the highly successful Royal Arsenal Riverside regeneration in Woolwich, SE18. The development benefits from an established residential community, strong local amenities, and a proven track record of tenant demand.

The apartment features a practical and modern layout, comprising an open plan living, kitchen, and dining area, designed to appeal to professional tenants. The kitchen includes fully integrated appliances, quality finishes, and efficient storage. The bedroom offers a comfortable double-sized space with full-height windows, while the contemporary bathroom is finished with floor-to-ceiling tiling, modern fittings, and heated towel rails. Estimated annual service charge £5.06 / sq ft. 999-year lease.





Address:

Royal Arsenal Riverside, Lantern Wharf, Woolwich, SE18

sq ft bed bath

609 1 1

*** For illustration purposes only. Could not be to scale. One-London aims to ensure accuracy but is not liable for any discrepancies.*