

## Pitt Crescent, SW19

£475,000

\* Share Of The Freehold \* A ground floor apartment with a private garden. There is a high specification throughout, including underfloor heating and high end appliances. There is also a 999-year lease and a share of the freehold.

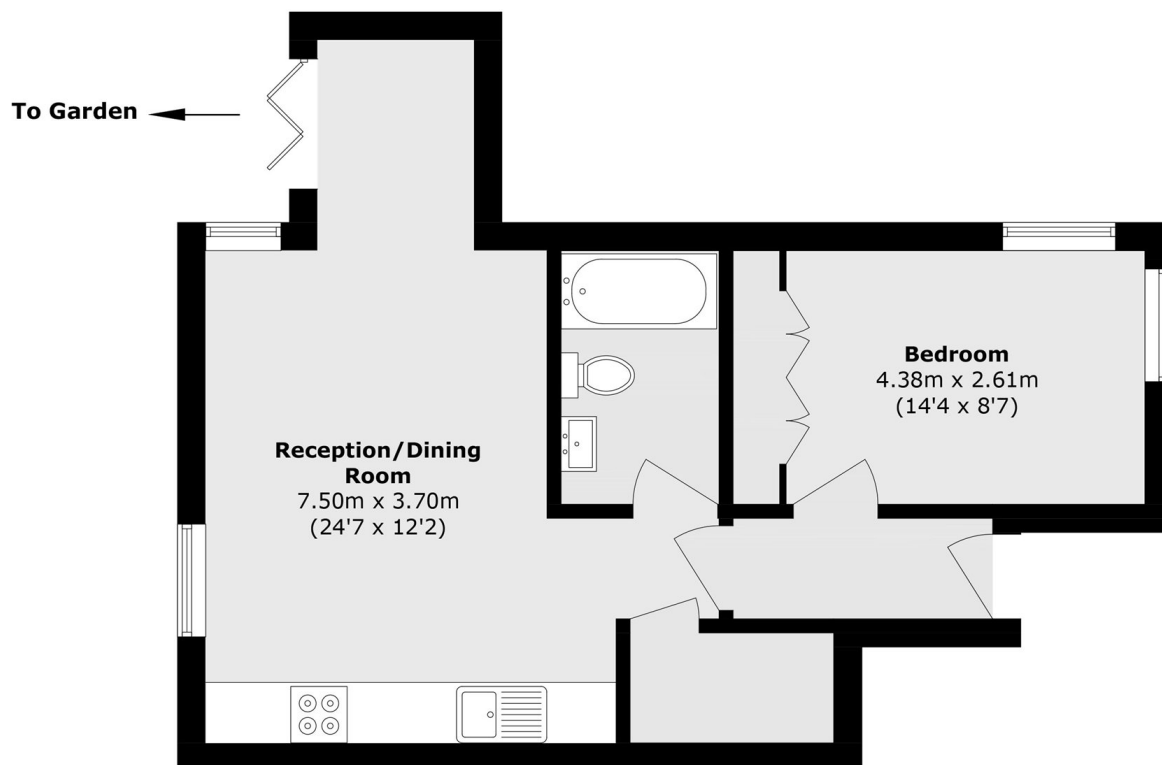
\* Please note - CGI imagery has been used to demonstrate the indicative final finish for the development \*

Wimbledon's unique blend of urban energy and suburban tranquillity provides an ideal setting for modern living. From artisan markets to scenic parks, the neighbourhood caters to a variety of lifestyles. Its excellent transport links ensure easy access to central London, making it a desirable location for those seeking both convenience and character.

### Features

Ground Floor Garden Flat  
New Build Apartment  
999 Year Lease  
Share Of The Freehold  
Q2 Estimated Completion  
No Ground Rent

Pitt Crescent,  
London, SW19



Total area (approx.): 49.7 sq. m (534.9 sq. ft)