



Netherwood Road, W14

£2,250 Per week

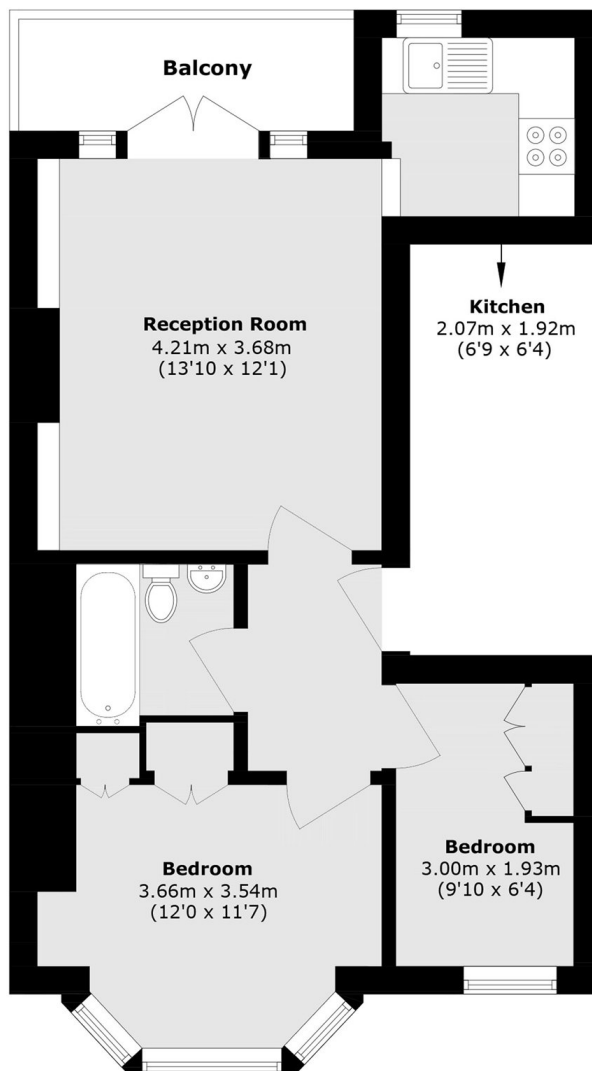
This newly renovated apartment has a spacious lounge with an open plan kitchen leading onto a great size balcony, a double bedroom with a separate guest/study room.

Netherwood Road is a popular street offering great transport links with Shepherds Bush Station and Goldhawk Road Stations less than half a mile away.

Features

- Newly Decorated
- Neutral Decor
- Ample Storage
- Balcony
- Period Conversion
- First Floor

Netherwood Road, London, W14



First Floor

Total area (approx.): 42.7 sq. m (459.6 sq. ft)

Balcony area (approx.): 4.8 sq. m (51.6 sq. ft)