

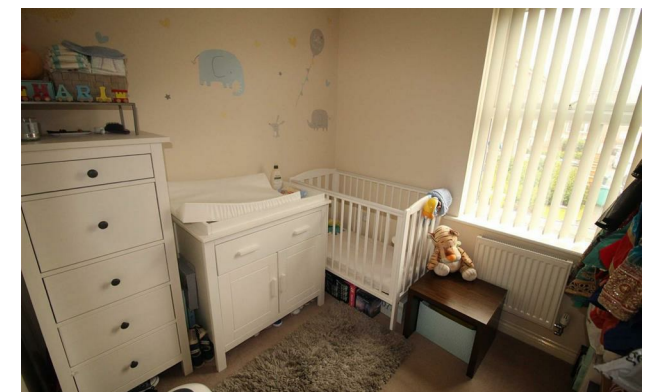


*Jordan fishwick*

16 Whitebarn Avenue, Cheetham Hill, M8  
£1,050 Per Calendar Month



**Whitebarn Avenue  
Manchester M8 0JU**  
**£1,050 Per Calendar Month**



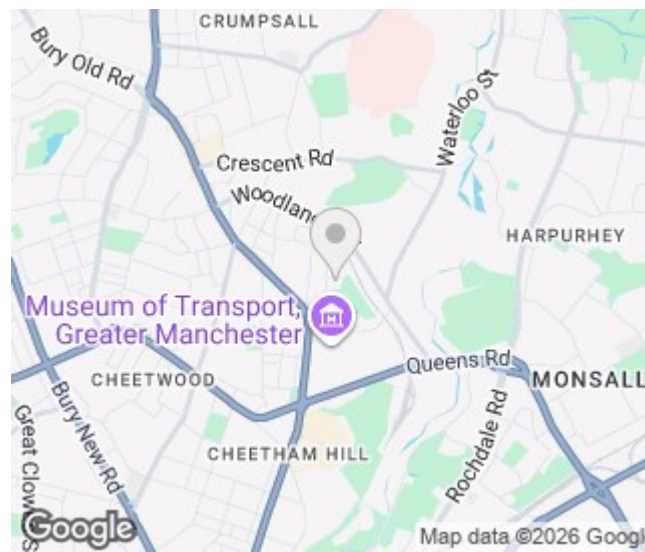
**The Property**


Available Late July. A well presented first floor apartment located close to all local amenities in the popular Cheetham Hill. Great for couples! Not ideal for Sharers. The City is just a stones throw away with many different transport links in and out of the city. This apartment has two double bedrooms, with the second bedroom currently used as a nursery, a spacious family bathroom with electric shower and a good size open plan kitchen and lounge with Juliet balcony. The kitchen is fully modernised with integrated appliances including washing machine, fridge/freezer and dish washer. Parking included, Gas central heating, Council Tax Band A, furnished, EPC rating B.

REPOSIT (Nil Deposit option) Available for this property.

**\*VIDEO/ PHOTO OFFERS NOT ACCEPTED - PLEASE CALL TO BOOK A VIEWING\***

- Available Late July
- First Floor Apartment
- Two Bedrooms
- Furnished
- Tax Band A
- EPC Rating B
- Close to City Centre
- Parking Included



Energy Efficiency Rating		
	Current	Potential
Very energy efficient - lower running costs		
(92 plus) <b>A</b>		
(81-91) <b>B</b>	<b>82</b>	<b>82</b>
(69-80) <b>C</b>		
(55-68) <b>D</b>		
(39-54) <b>E</b>		
(21-38) <b>F</b>		
(1-20) <b>G</b>		
Not energy efficient - higher running costs		
<b>England &amp; Wales</b>	EU Directive 2002/91/EC 	

Available with  
**Reposit**  
 No deposit needed





These particulars are believed to be accurate but they are not guaranteed and do not form a contract. Neither Jordan Fishwick nor the vendor or lessor accept any responsibility in respect of these particulars, which are not intended to be statements or representations of fact and any intending purchaser or lessee must satisfy himself by inspection or otherwise as to the correctness of each of the statements contained in these particulars. Any floorplans on this brochure are for illustrative purposes only and are not necessarily to scale.

Offices at: Offices at Chorlton, Didsbury, Disley, Hale, Glossop, Macclesfield, Manchester Deansgate, Manchester Whitworth Street, New Mills, Sale, Wilmslow and Withington