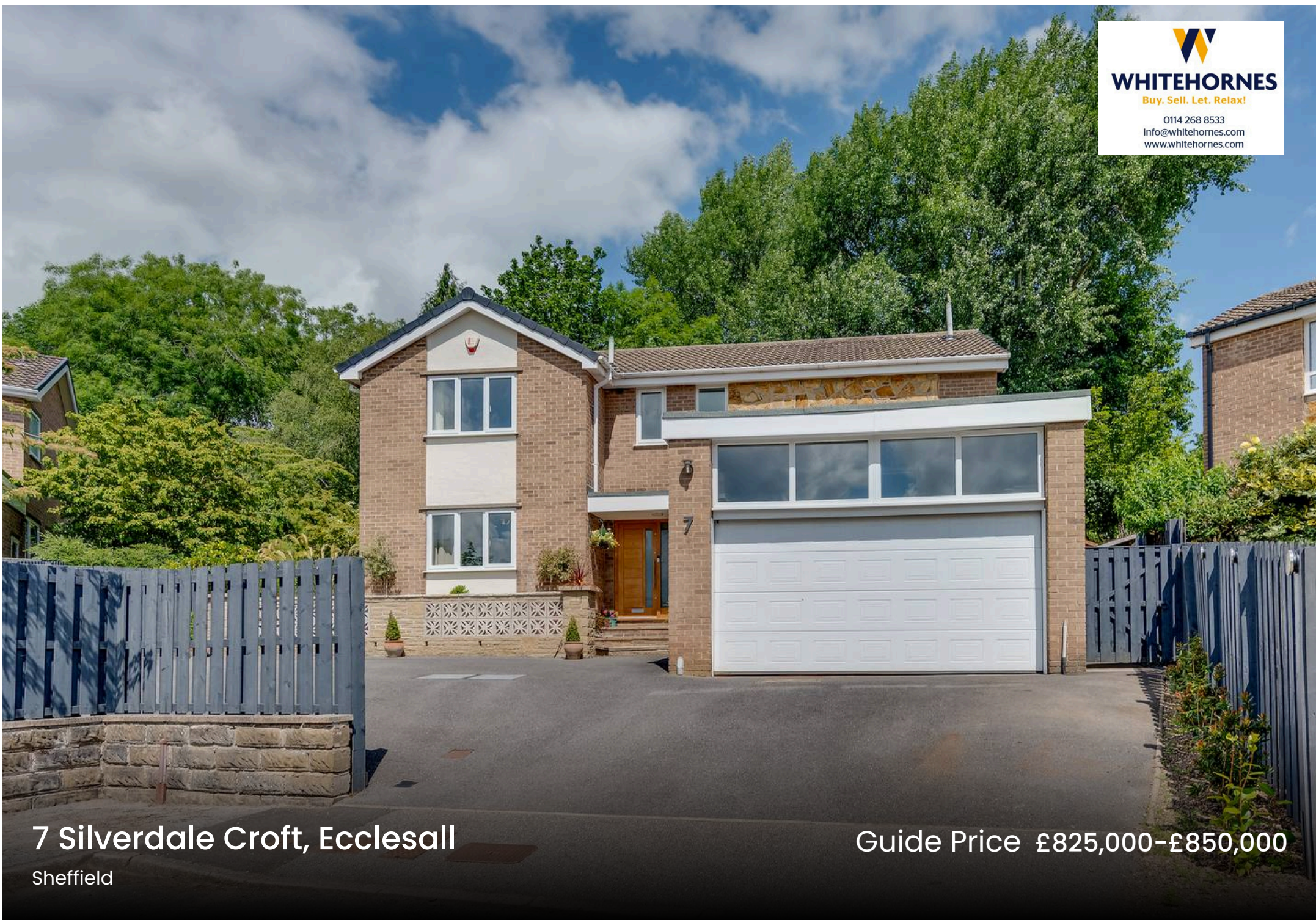




WHITEHORNS

Buy. Sell. Let. Relax!

0114 268 8533
info@whitehorns.com
www.whitehorns.com



7 Silverdale Croft, Ecclesall

Sheffield

Guide Price £825,000-£850,000

7 Silverdale Croft

Ecclesall, Sheffield

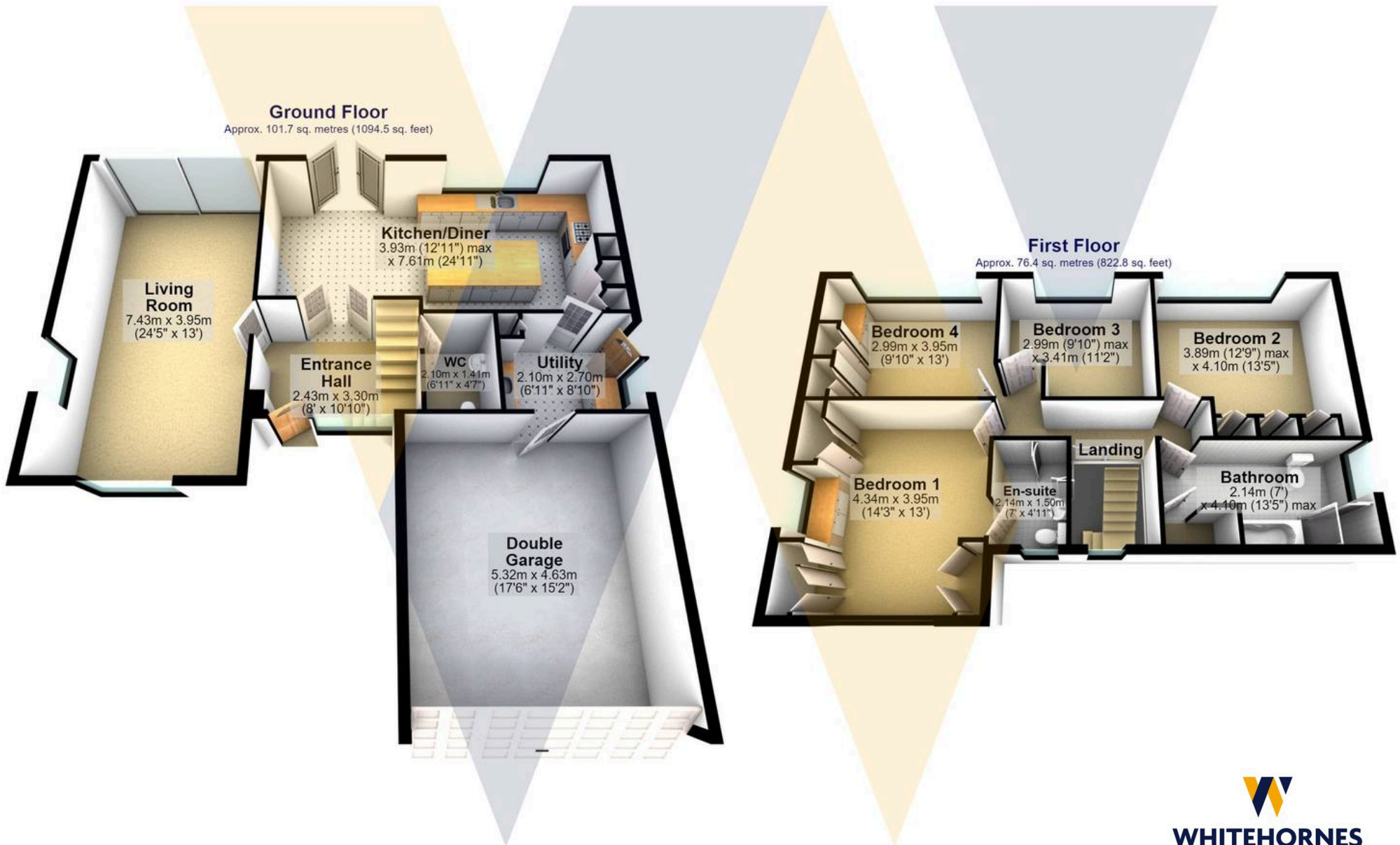
This stunning four double bedroom, two bathroom detached family residence occupies the prime position at the head of a double cul-de-sac, right in the heart of ultra-popular Ecclesall. Boasting the largest plot on this well-regarded road, the home is finished internally to an exceptional standard throughout, with no expense spared by the current vendors. The accommodation extends over two beautiful floors, totalling an impressive 1,917 square feet, and includes a master bedroom with en-suite and built-in bedroom furniture. The property is perfectly situated within the catchment area for Ofsted-rated excellent schools, including Dobcroft Juniors and Silverdale Secondary, making it an ideal choice for families. The layout offers a versatile and spacious living environment, with an open plan dining kitchen that gives direct access to the gardens.

Council Tax band: F Tenure: Freehold

- STUNNING FOUR DOUBLE BEDROOMED TWO BATHROOMED DETACHED FAMILY RESIDENCE
- OCCUPYING THE PRIME POSITION AT THE HEAD OF THIS DOUBLE CUL DE SAC WITHIN THE VERY HEART OF ULTRA POPULAR ECCLESALL
- ENJOYING THE LARGEST PLOT ON THIS WELL REGARDED ROAD WITH WRAP AROUND FAMILY GARDENS THAT OFFER A HUGE DEGREE OF PRIVACY BACKING ON TO PROTECTED NATURAL WOODLAND
- FINISHED INTERNALLY TO A TRULY EXCEPTIONAL STANDARD THROUGHOUT BY THE CURRENT VENDORS WITH ABSOLUTELY NO EXPENSE SPARED
- OFSTED RATED EXCELLENT SCHOOLING CATCHMENTS INCLUDING DOBCROFT JUNIORS AND SILVERDALE SECONDARY







Total area: approx. 178.1 sq. metres (1917.4 sq. feet)

All measurements are approximate
Plan produced using PlanUp.

7 Silverdale Croft


WHITEHORNES
Buy. Sell. Let. Relax!

0114 268 8533
info@whitehornes.com
www.whitehornes.com