



4B Harrow Lane, Maidenhead, SL6 7PE
£285,000 Leasehold

CHAIN FREE A two-bedroom ground floor apartment with a private garden, within easy reach of local amenities, schools and Furze Platt station connecting with the Elizabeth Line.

Entrance Hall

Built in storage cupboard

Living Room

Wood laminate flooring, door leading to enclosed garden

Bathroom

White suite of a panelled bath with shower unit, wash basin with cupboard below , fully tiled, close coupled wc

Kitchen

Fitted with a range of units comprising base and wall units, built in oven with gas hob above and extractor fan above, space for tall fridge freezer, space washing machine

Double Bedroom

Built in mirrored wardrobe

Bedroom 2

Outside

Enclosed secluded garden to the rear, rear gate access, allocated parking space

Floor Plan

Approximate Floor Area = 53.8 sq m / 578 sq ft

Harrow Lane

Waterman
Established 1990

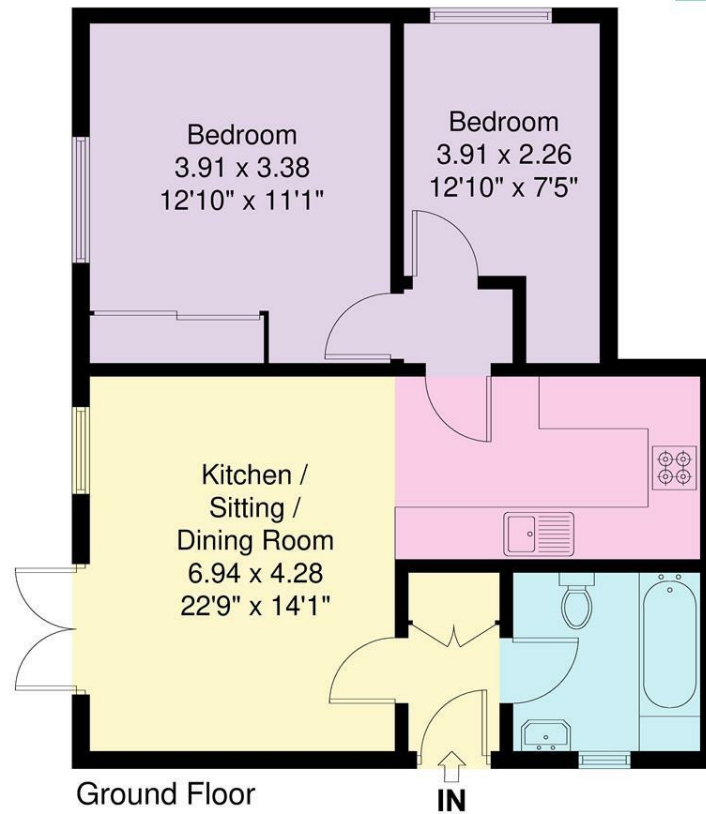
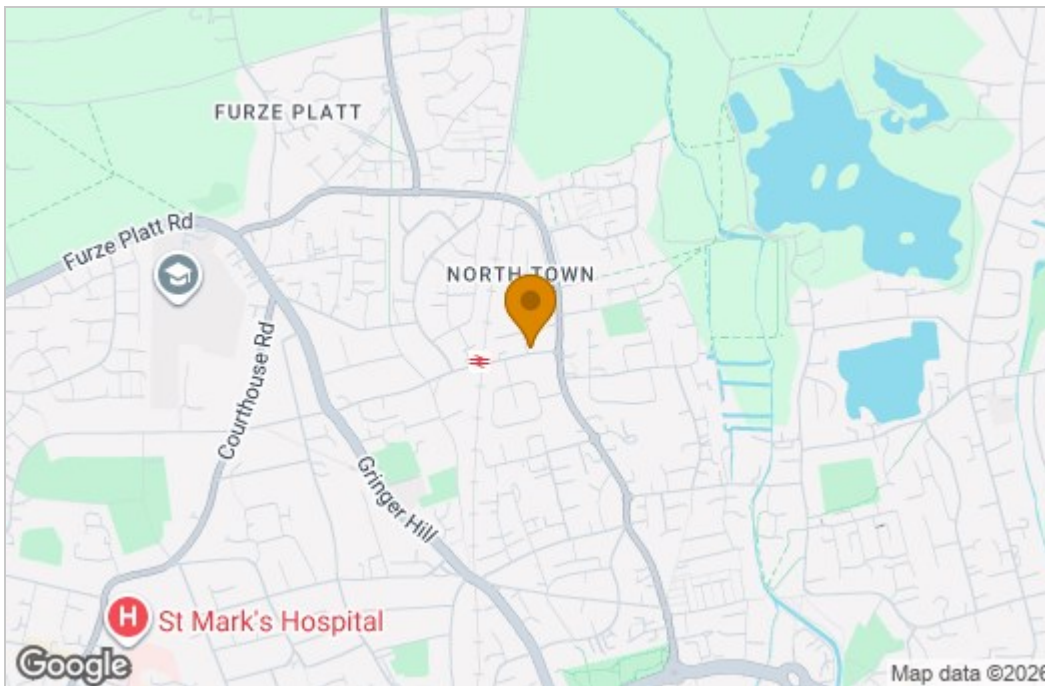


Illustration for identification purposes only,
measurements are approximate, not to scale.

Area Map



Energy Efficiency Graph

Energy Efficiency Rating		Current	Potential
Very energy efficient - lower running costs			
(92 plus) A			
(81-91) B		81	81
(69-80) C			
(55-68) D			
(39-54) E			
(21-38) F			
(1-20) G			
Not energy efficient - higher running costs			
England & Wales		EU Directive 2002/91/EC	
Environmental Impact (CO ₂) Rating		Current	Potential
Very environmentally friendly - lower CO ₂ emissions			
(92 plus) A			
(81-91) B			
(69-80) C			
(55-68) D			
(39-54) E			
(21-38) F			
(1-20) G			
Not environmentally friendly - higher CO ₂ emissions			
England & Wales		EU Directive 2002/91/EC	

These particulars, whilst believed to be accurate are set out as a general outline only for guidance and do not constitute any part of an offer or contract. Intending purchasers should not rely on them as statements of representation of fact, but must satisfy themselves by inspection or otherwise as to their accuracy. No person in this firm's employment has the authority to make or give any representation or warranty in respect of the property.