



## JOHN HUNTER AVENUE, SW17

£950,000

Four Bedrooms  
Three Bathrooms  
Downstairs WC  
Private Garden  
Close to Tooting Bec Station  
1398 Sq. Ft.

@marshandparsons  
marshandparsons.co.uk

MARSH &  
PARSONS



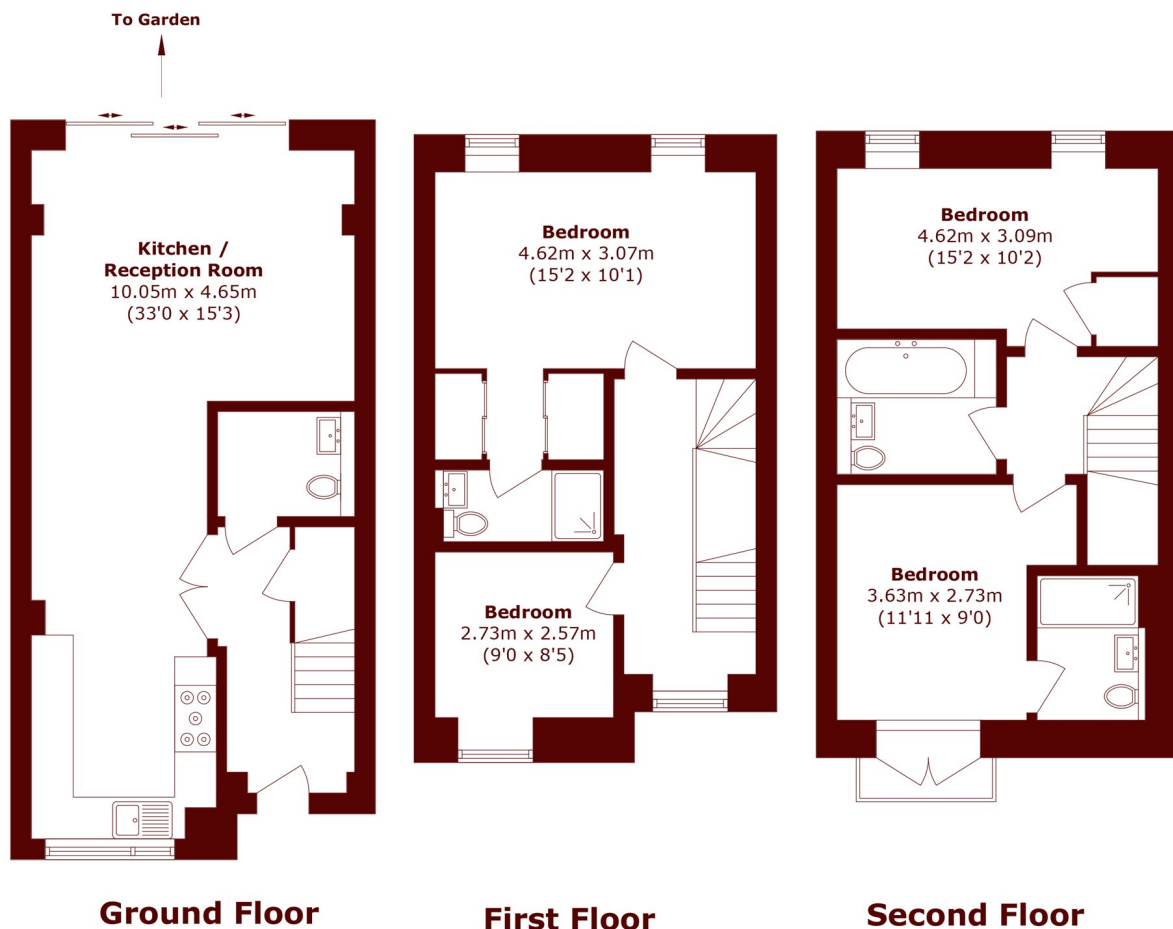
# ABOUT THE PROPERTY

Full of natural light with floor to ceiling windows, and superb proportions, this stunning home is located in a quiet development. The ground floor accommodates a fully fitted kitchen, WC, a spacious open plan living/ dining area with bi-folding doors leading out to the landscaped private garden. The first floor boasts a large double bedroom with walk in wardrobe and en-suite shower room, as well as another double bedroom. The top floor boasts another double bedroom with fitted wardrobes and its own en suite as well as a large double bedroom with fitted wardrobes and its own separate bathroom.

John Hunter Avenue is a private, quiet development only



# STEP INSIDE JOHN HUNTER AVENUE



Total area (approx.): 121.8 sq. m (1311.0 sq. ft)

**Tooting**  
020 8767 3655

Energy Rating: B We aim to make our particulars both accurate and reliable. However, they are not guaranteed; nor do they form part of an offer or contract. If you require clarification on any points then please contact us, especially if you're traveling some distance to view. Please note that appliances and heating systems have not been tested and therefore no warranties can be given as to their good working order

**MARSH &  
PARSONS**