



**Lancewood Walk, RAF Lakenheath, Brandon, IP27 9QU**

**welcome to**

## **Lancewood Walk, RAF Lakenheath, Brandon**

An excellent INVESTMENT OPPORTUNITY with TENANTS IN SITU, generating £1,250pcm and a STRONG YIELD of over 6.5%, this THREE-BEDROOM END-TERRACE sits on a LARGER-THAN-AVERAGE PLOT and is ready to add straight to a portfolio!

### **Summary**

Attention investors - offered to the market with happy tenants already in situ, this well-presented end-terraced home generates a rental income of £1,250 per calendar month, delivering a yield of well over 6.5%. An ideal first investment or a strong addition to an existing portfolio.

Positioned on a larger-than-average plot for this style of property, the home has been cleverly reconfigured from its original two-bedroom layout to now provide three bedrooms, while still retaining generous living space.

Internally, the property has been well maintained and offers accommodation typical of homes on the popular Lords Walk estate. A welcoming entrance leads into a bright and spacious L-shaped living/dining room, filled with natural light and offering ample space for both lounging and entertaining. The modern, well-equipped kitchen provides plenty of room for appliances and everyday practicality.

Upstairs, three bedrooms are served by a sleek, modern bathroom, completing the accommodation.

Occupying a corner plot, the rear garden is notably spacious and versatile, offering excellent outdoor space for tenants and further enhancing the property's rental appeal.

A ready-made investment with strong returns - viewing is highly recommended to fully appreciate what's on offer!

### **The Accommodation**

Entrance door to:

#### **Entrance Hall**

With door to side and door into:

#### **Lounge / Diner**

With dual aspect windows to both the front and rear, stairs to the first floor landing, built in under stairs storage cupboard, two further built in storage cupboards and radiator.

#### **Kitchen**

With a range of fitted kitchen units at wall and base level with work surface over, inset sink unit with mixer tap and drainer over, space and plumbing for washing machine, space for fridge/freezer, space and point for oven, window to rear and radiator.

#### **First Floor Landing**

With built in airing cupboard, further built in storage cupboard and access to the loft space.

#### **Bedroom One**

With built in storage cupboard/wardrobe, window to rear and radiator.

#### **Bedroom Two**

With window to front and radiator.

#### **Bedroom Three**

With window to side.

#### **Bathroom**

With W.C, wash hand basin with mixer tap over, bath with mixer tap and shower attachment over, window to rear and heated towel rail.





## Outside

### Front Garden

To the front of the property, there is a lawned front garden, a pathway to the front door and an external storage shed.

### Rear Garden

To the rear, the garden is largely laid to lawn with a gate to the side.



**check out more properties at** [williamhbrown.co.uk](http://williamhbrown.co.uk)



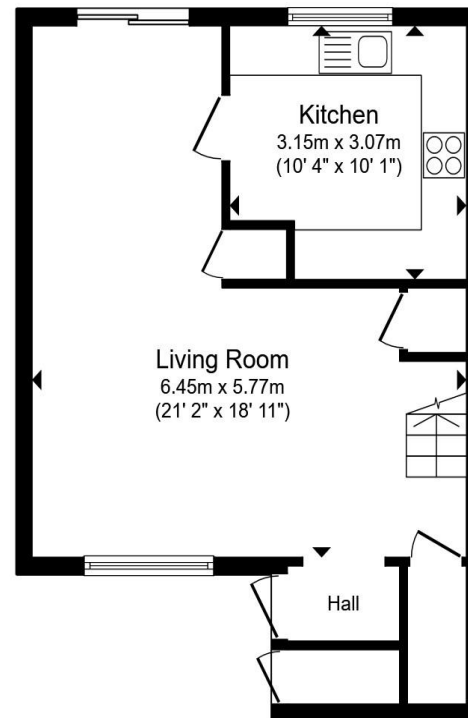
welcome to

## Lancewood Walk, RAF Lakenheath, Brandon

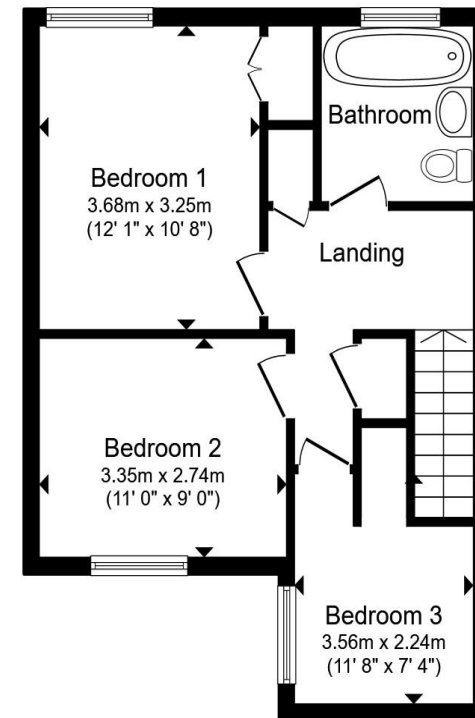
- Investment Opportunity with Tenants Already in Situ
- Rental Income of £1,250pcm and a Yield of Well Over 6.5%!
- End-Terraced Home on a Larger than Average Plot
- Previously Two Bedrooms, Now Three
- Well Maintained Throughout
- Bright L-Shaped Living/Dining Room
- Modern Kitchen & Bathroom
- Ideal First Investment or Portfolio Addition

Tenure: Freehold EPC Rating: E

**£225,000**



Ground Floor



First Floor

Total floor area 82.9 m<sup>2</sup> (892 sq.ft.) approx

This floor plan is for illustrative purposes only. It is not drawn to scale. Any measurements, floor areas (including any total floor area), openings and orientation are approximate. No details are guaranteed, they cannot be relied upon for any purpose and they do not form part of any agreement. No liability is taken for any error, omission or misstatement. A party must rely upon its own inspection(s). Powered by [www.propertybox.io](http://www.propertybox.io)



check out more properties at [williamhbrown.co.uk](http://williamhbrown.co.uk)



Property Ref:  
BRD111099 - 0001

1. MONEY LAUNDERING REGULATIONS Intending purchasers will be asked to produce identification documentation at a later stage and we would ask for your co-operation in order that there is no delay in agreeing the sale. 2. These particulars do not constitute part or all of an offer or contract. 3. The measurements indicated are supplied for guidance only and as such must be considered incorrect. Potential buyers are advised to recheck measurements before committing to any expense. 4. We have not tested any apparatus, equipment, fixtures or services and it is in the buyers interest to check the working condition of any appliances. 5. Where an EPC, or a Home Report (Scotland only) is held for this property, it is available for inspection at the branch by appointment. If you require a printed version of a Home Report, you will need to pay a reasonable production charge reflecting printing and other costs. 6. We are not able to offer an opinion either written or verbal on the content of these reports and this must be obtained from your legal representative. 7. Whilst we take care in preparing these reports, a buyer should ensure that his/her legal representative confirms as soon as possible all matters relating to title including the extent and boundaries of the property and other important matters before exchange of contracts.

William H Brown is a trading name of Sequence (UK) Limited which is registered in England and Wales under company number 4268443, Registered Office is Cumbria House, 16-20 Hockliffe Street, Leighton Buzzard, Bedfordshire, LU7 1GN. VAT Registration Number is 500 2481 05.

 william h brown



**01842 811058**



[Brandon@williamhbrown.co.uk](mailto:Brandon@williamhbrown.co.uk)



18-20 High Street, BRANDON, Suffolk, IP27 0AQ



[williamhbrown.co.uk](http://williamhbrown.co.uk)

