



R B WALTERS
ESTATE AGENTS



*Greenfields Cottage, Taynton,
Gloucestershire, GL19 3AN.*

£550,000

Escape to the Country with this delightful character cottage which enjoys a peaceful location yet is just 5 minutes from the town of Newent and enjoys gardens of approximately 1/2 acre.

Located along a quiet country lane with stunning far-reaching views across the surrounding countryside this detached cottage provides plenty of charm and exceptional living space.

The ground floor has an attractive entrance hall with exposed brick wall and leads to the cosy lounge with feature fireplace. There is a separate dining room, kitchen/breakfast room and a sunroom with doors out onto an attractive patio area. There is also a laundry room and cloakroom. The first floor has three double bedrooms and a bathroom.

Outside the well-established gardens are approximately 1/2 acre and are surrounded by fields and farms. There are plenty of secluded areas and also areas of lawn offering ample space to play. The driveway provides parking for several vehicles and there is a garage and good size workshop.

The town of Newent with its wide variety of shops is about 5 minutes drive away and the larger city of Gloucester and Spa town of Cheltenham can be reached in about 20 minutes.

Entrance Hall

Living Room

13' 5" x 11' 10" (4.09m x 3.60m)

Dining Room

14' 8" x 11' 8" (4.47m x 3.55m)

Kitchen/Breakfast Room

16' 5" x 7' 11" (5.00m x 2.41m)

Inner Hallway

Cloakroom

6' 11" x 4' 1" (2.11m x 1.24m)

Sunroom

19' 3" x 8' 9" (5.86m x 2.66m)

Utility Room

8' 9" x 5' 5" (2.66m x 1.65m)





First Floor Landing

Bedroom

12' 7" x 11' 10" (3.83m x 3.60m)

Bedroom

12' 6" x 9' 0" (3.81m x 2.74m)

Bedroom

11' 8" x 8' 8" (3.55m x 2.64m)

Bathroom

12' 0" x 6' 4" (3.65m x 1.93m)

Outside

Driveway Parking

Garage

18' 9" x 9' 7" (5.71m x 2.92m)

Workshop

18' 3" x 10' 2" (5.56m x 3.10m)

Gardens of Approximately 1/2 Acre

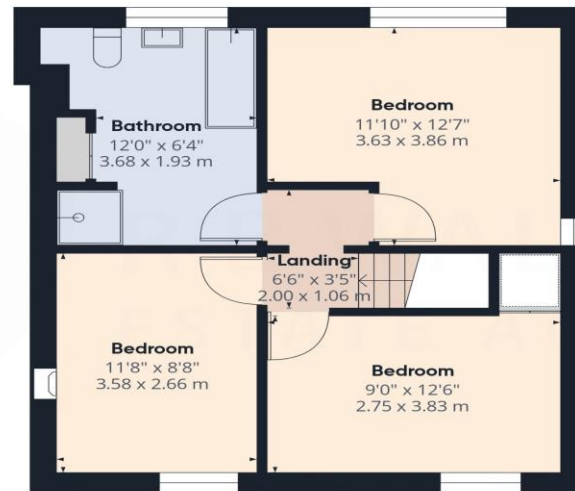




Ground Floor Building 1

Approximate total area⁽¹⁾

1381 ft²
128.4 m²



Floor 1 Building 1

(1) Excluding balconies and terraces

Calculations reference the RICS IPMS 3C standard. Measurements are approximate and not to scale. This floor plan is intended for illustration only.

GIRAFFE360

