



Connells

Loveridge Close
Swindon



Property Description

Located in the popular area of Stratton St Margaret's, Swindon, this well-presented three-bedroom home offers spacious and practical accommodation, providing a turn-key feel! The ground floor accommodation begins with a welcoming entrance hall leading to a bright and comfortable lounge, providing an ideal space for relaxing or entertaining. The property also benefits from a modern fitted kitchen, offering a range of wall and base units, ample worktop space, and room for appliances. To the first floor, there are three well-proportioned bedrooms, providing flexible living arrangements for families or those needing additional space for a home office or guest room. The bedrooms are served by a family bathroom fitted with modern fixtures and fittings. Externally, the property benefits from an enclosed rear garden, offering a private outdoor space suitable for relaxing, gardening, or outdoor dining. Further advantages include a garage and driveway parking, providing convenient off-road parking and additional storage. The property is well located for local amenities, schools, shops, and transport links, making it a convenient and desirable location within Swindon.

Ground Floor Accommodation Entrance Hall

Double glazed door to the front aspect. Access to the kitchen and lounge/diner. Stairs rising to the first floor accommodation. Radiator.

Lounge/Diner

15' 3" x 13' 8" MAX narrowing to 10' 4" (4.65m x 4.17m MAX narrowing to 3.15m)
Double glazed French doors to the rear garden. Under stair storage cupboard. Radiator.

Kitchen

9' 6" x 7' 1" (2.90m x 2.16m)
Double glazed window to the front aspect. Fully fitted kitchen with a range of base and wall mounted units comprising of cupboards and drawers. Sink with drainer and mixer tap. Space for American style fridge freezer. Space and plumbing for washing machine and slim line dishwasher. Integrated four ring gas hob, oven and cooker hood.

First Floor Accommodation First Floor Landing

Access to all bedrooms and family bathroom. Loft access. Storage cupboard.

Bedroom One

11' 10" x 8' 6" (3.61m x 2.59m)
Double glazed window to the rear aspect. Fitted double wardrobe. Radiator.

Bedroom Two

11' 8" x 6' 10" (3.56m x 2.08m)
Double glazed window to the front aspect. Radiator.

Bedroom Three

7' 4" x 6' 8" (2.24m x 2.03m)
Double glazed window to the front aspect. Radiator.

Bathroom

Obscure double glazed window to the side aspect. Three piece suite comprising of walk-in-shower wash hand basin and Low Level WC. Partially marble tiling to water sensitive areas. Heated towel rail.

External Features Garden

Fenced boundaries. Laid to decking and lawn.
Shed.

Parking

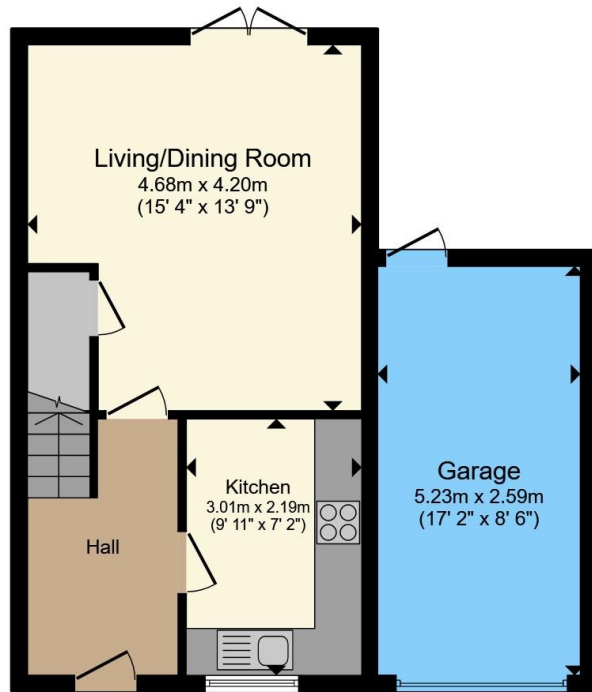
Driveway parking to the front

Garage

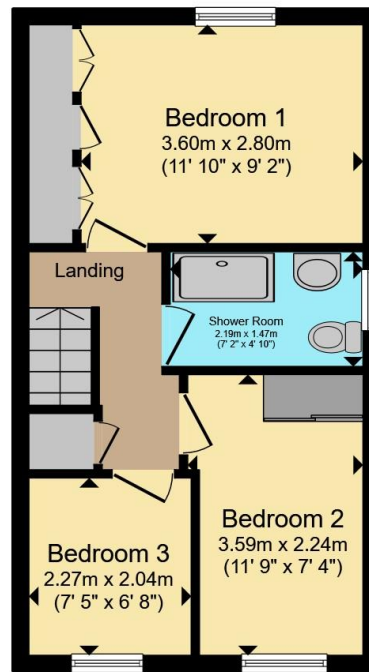
17' x 8' 11" (5.18m x 2.72m)

Electric roller door. Power and lighting. Door
to the rear garden.





Ground Floor



First Floor

Total floor area 83.3 m² (897 sq.ft.) approx

This floor plan is for illustrative purposes only. It is not drawn to scale. Any measurements, floor areas (including any total floor area), openings and orientation are approximate. No details are guaranteed, they cannot be relied upon for any purpose and they do not form part of any agreement. No liability is taken for any error, omission or misstatement. A party must rely upon its own inspection(s). Powered by www.propertybox.io



To view this property please contact Connells on

T 01793 708050
E swindonnorth@connells.co.uk

Unit B11 North Swindon District Centre Thamesdown Drive
SWINDON SN25 4AN

EPC Rating: D Council Tax
Band: C

view this property online connells.co.uk/Property/SDN314677

Tenure: Freehold



1. MONEY LAUNDERING REGULATIONS Intending purchasers will be asked to produce identification documentation at a later stage and we would ask for your co-operation in order that there will be no delay in agreeing the sale. 2. These particulars do not constitute part or all of an offer or contract. 3. The measurements indicated are supplied for guidance only and as such must be considered incorrect. Potential buyers are advised to recheck measurements before committing to any expense. 4. We have not tested any apparatus, equipment, fixtures, fittings or services and it is in the buyers interest to check the working condition of any appliances.

Connells Residential is registered in England and Wales under company number 1489613, Registered Office is Cumbria House, 16-20 Hockliffe Street, Leighton Buzzard, Bedfordshire, LU7 1GN. VAT Registration Number is 500 2481 05.

See all our properties at www.connells.co.uk | www.rightmove.co.uk | www.zoopla.co.uk

Property Ref: SDN314677 - 0003